



Fitting Instructions for MFG43000 Nissan Patrol Gearbox Crossmember

Important Information

This instruction booklet can be used standalone for the above stated conversion but we would also recommend having a workshop manual for your vehicle to cover any factory Nissan torque / installation settings to complete the crossmember installation to your Patrol.

The instruction booklet describes the required modifications (if any) and installation process in order for our kit to fit and work properly.

Marks 4WD Adaptors cannot and will not take responsibility for knowing everything that may impact on your conversion. Before beginning any work, thoroughly work through the sequence of changes, work and potential impact of your conversion. You must ensure you completely understand all the factors that may impact on achieving your desired results.



Installing the Marks 4WD Nissan Patrol Gearbox Crossmember

When crossmember is purchased the transfer case mount is bolted in the factory ZD30 Manual position. We have done this as our engine conversion kits are based on this crossmember configuration.

If adjustment is desired/required then the transfer mount can be moved backwards or forwards in small amounts by loosening the x6 M10 bolts. If major adjustment is required the x6 M10 bolts will need to be removed, the transfer case mount moved and the bolts refitted in the correct position.

There are two ways this crossmeber can be bolted up, the transfer case bracket on first (Image 1) or as a complete unit (Image 3).

2 Piece Installation

- Remove transfer mount from crossmember base.
- Using original transfer nuts attach the crossmember transfer mount to transfer rubbers and torque to factory spec. *See image 1*



Image 1

- Bolt up crossmember base and torque to factory spec
- Refit washers and M10 bolts and tighten. *See image 2*

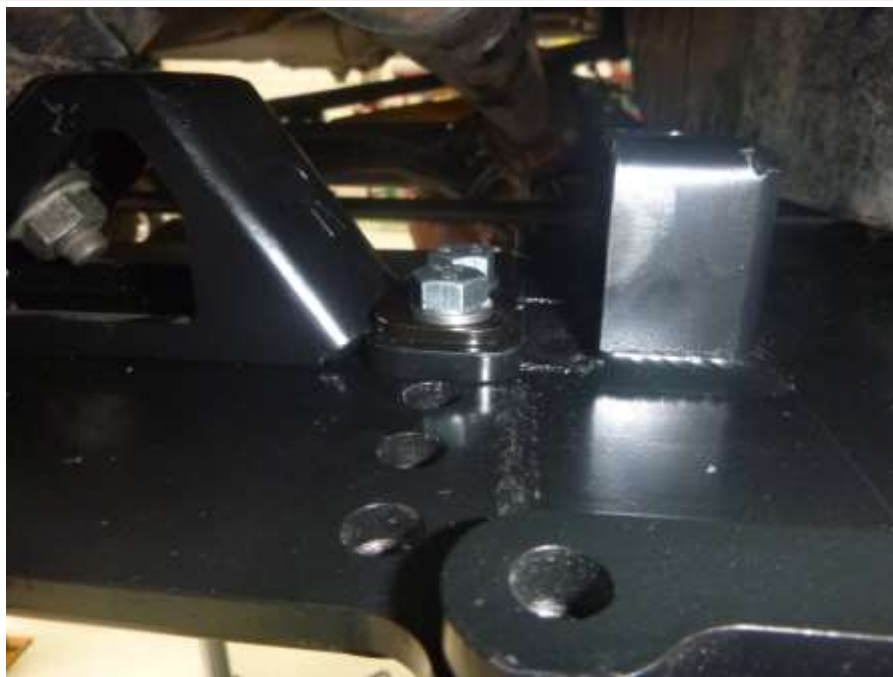


Image 2

1 Piece Installation

Lift crossmember into position as you would a normal crossmember, but instead of the nuts being done up from underneath the crossmember, it will have to be done through the side of the transfer mount. Using a ring spanner, tighten the nuts. (Use high strength Loctite on threads) *See Image 3*



Image 3

10mm Spacers

With our design we have mounted two 10mm spacers to the crossmember. We have made these removable as some crossmembers are raised in this section and some are completely flat.

Our kits are based on using a ZD30 manual crossmember that is raised in this section by 10mm and it is recommended that they are used for our conversions. However they can be removed to increase crossmember to ground clearance, change engine angle and driveshaft angles. *See image 3 & 4*



Image 4



Image 5

As mentioned the crossmember is shipped in the factory ZD30 manual position with 10mm spacers fitted, this is the setup our Nissan Patrol GU Y61 kits are based on for the positioning of all Marks 4WD conversion components. Moving the transfer position thus changing engine position and removing 10mm spacers is completely the choice of the customer and Marks 4wd will not be held responsible for any complications caused by this.

Terms and Conditions

Thank you for purchasing this product manufactured by Marks 4WD Adaptors. Components supplied in this kit are designed and machined for a specific conversion only as outlined in this guide. Modifications to or substitution for any of the components without the written consent of Marks 4WD Adaptors will void any possible warranty or return privileges.

The following instructions are intended as a guide and only for Marks 4WD Adaptors kits. If you do not fully understand the steps, modifications or changes required to complete the conversion, contact our sales department for more information. We recommend that you purchase a service manual pertaining to your vehicle for specific torque values, wiring diagrams and other related information.

Contact Information

Web: <http://www.marks4wd.com/>

Email: sales@marks4wd.com

Phone: + 61 3 9552 6555

Address: 385-393 Lower Dandenong Rd
Dingley Victoria 3172
Australia