

Step 1 Chassis Posts

Grind the tabs down on the chassis posts so they are flush with chassis post adaptor supplied (MFC20554)

If these are not ground down the engine mount rubber will not sit flush.

Please see below:



Image 1.1 Grind tabs down

Fit the chassis post adaptor (MFC20554) to the Hilux chassis post, the long side of the plate fits facing down towards the engine block. Fit the supplied spring washer and nut to secure to the chassis post.



Image 1.1 Fit chassis post adaptor

Step 2 Engine Mount Rubbers

Cut the thread on the chassis post side of both engine mount rubbers down to 21mm.

Please take note of the orientation of the mount to cut:

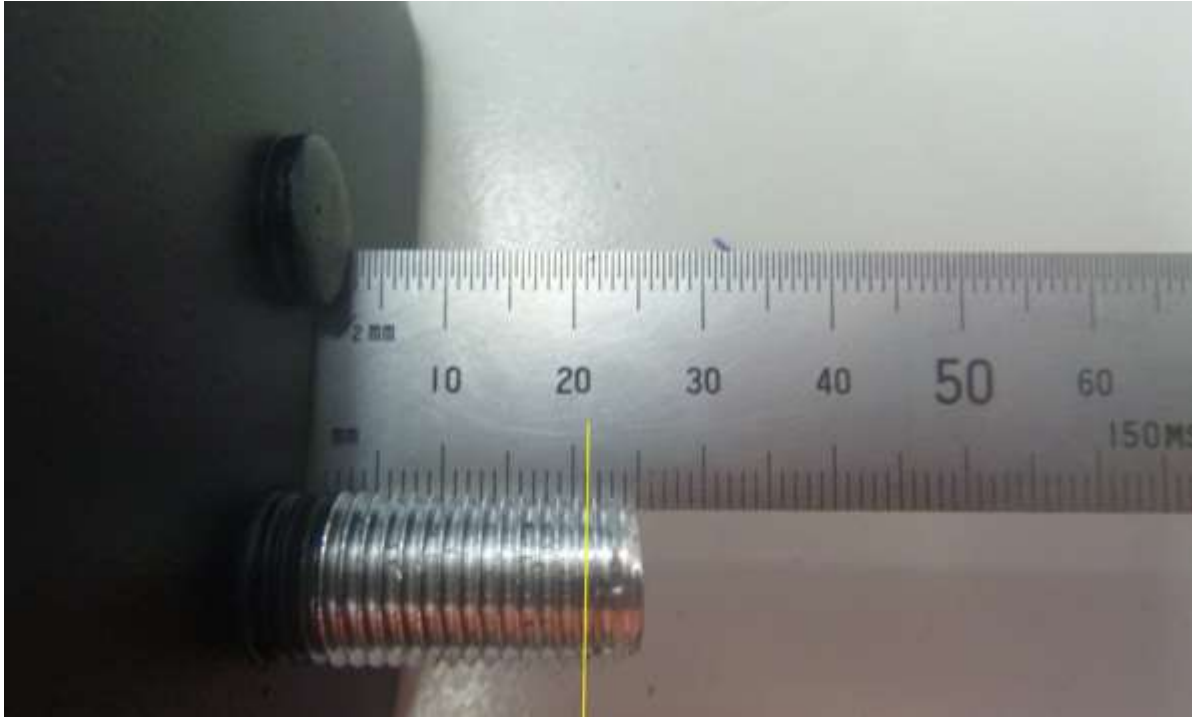


Image 2.1 Engine mount rubber

Cut the thread on the chassis post side of both engine mount rubbers down to 18mm.

Please take note of the orientation of the mount to cut:

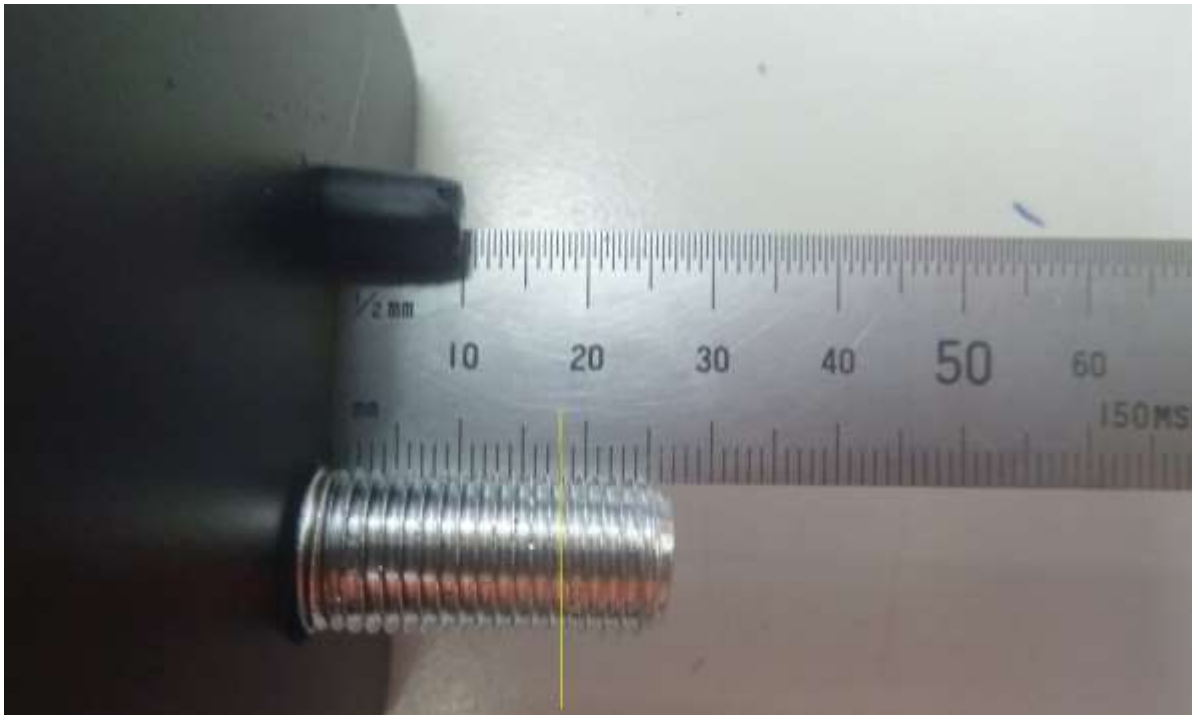


Image 2.2 Engine mount rubber

Step 3 Engine Block Brackets

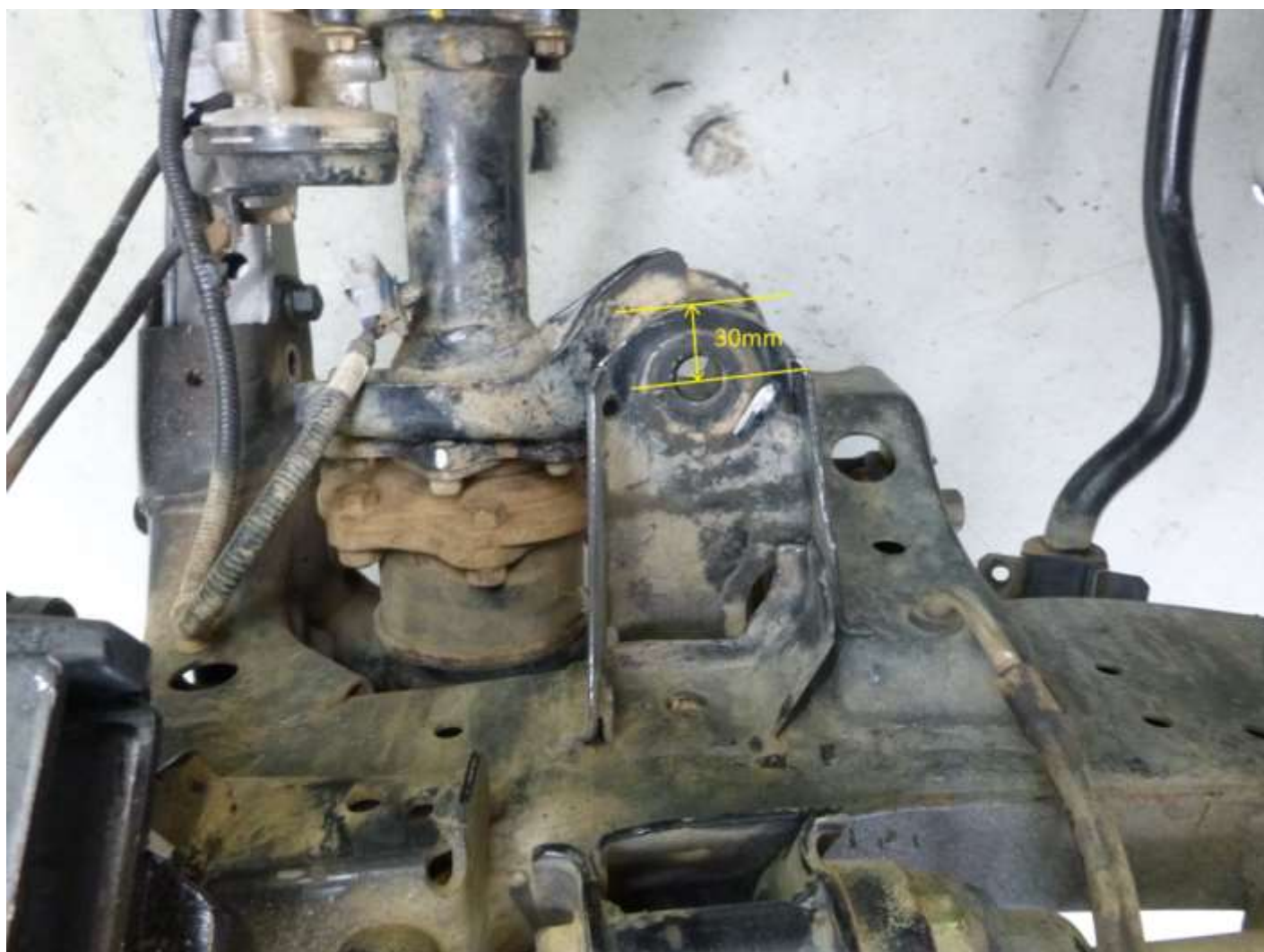
The block brackets are stamped with the part number MFC20550L (left hand mount) and MFC20550R (right hand mount). Left and right are taken from sitting in the vehicle.

Fit these to the block with the supplied M10 x 35mm bolts

Step 4 Diff Mount Modification

Depending on the sump you are running/fabricating the passenger side chassis diff mount will need to be modified to allow clearance for the LS oil filter.

From the centre of the hole to the outer lip it should be cut down to 30mm. We advise you to weld a plate in to maintain structural integrity.



Step 5 Mounting Engine

Please fit the engine mount rubbers onto the chassis post adaptors but don't bolt the 2 together at this stage.

Lower the engine into the engine bay and locate onto the rubbers.

Once all lined up fit the supplied nuts to both sides of the rubbers and tighten.

Double check all bolts and nuts are tight.

Step 6 Steering Box Spacer

To give you more engine to steering box clearance we supply 2 spacer plates (MFC20543) and new longer bolts to space the steering box out.

Please fit if you require the extra clearance.

Terms and Conditions

Thank you for purchasing this product manufactured by Marks 4WD Adaptors. Components supplied in this kit are designed and machined for a specific conversion only as outlined in this guide. Modifications to or substitution for any of the components without the written consent of Marks 4WD Adaptors will void any possible warranty or return privileges.

The following instructions are intended as a guide and only for Marks 4WD Adaptors kits. If you do not fully understand the steps, modifications or changes required to complete the conversion, contact our sales department for more information. We recommend that you purchase a service manual pertaining to your vehicle for specific torque values, wiring diagrams and other related information.

Contact Information

Web: <http://www.marks4wd.com/>

Email: sales@marks4wd.com

Phone: + 61 3 9552 6555

Address: 385-393 Lower Dandenong Rd
Dingley Victoria 3172
Australia