



Fitting Instructions for MFK33000 HZJ7# Transmission Handbrake



Important Information

This instruction booklet can be used standalone for the above stated conversion but we would also recommend having a workshop manual for your vehicle and for the engine/transmission you are installing to cover any factory torque / installation settings to complete the installation.

The instruction booklet describes the required modifications (if any) and installation process in order for our kit to fit and work properly. These instructions **make no assumption** on whether additional changes need to be considered or made. It is highly possible that other aspects of your vehicle and/or third party products, eg. Engine, transmission etc. will have an impact on all that is required for you to achieve your desired outcome.

Marks 4WD Adaptors do not and cannot take responsibility for knowing everything that may impact on your conversion. Before beginning any work, thoroughly work through the sequence of changes, work and potential impact of your conversion. You must ensure you completely understand all the factors that may impact on achieving your desired results.

1 - Disassembly

Fitment is easiest done on a hoist.

Remove factory bashplate, rear tailshaft and handbrake cable.

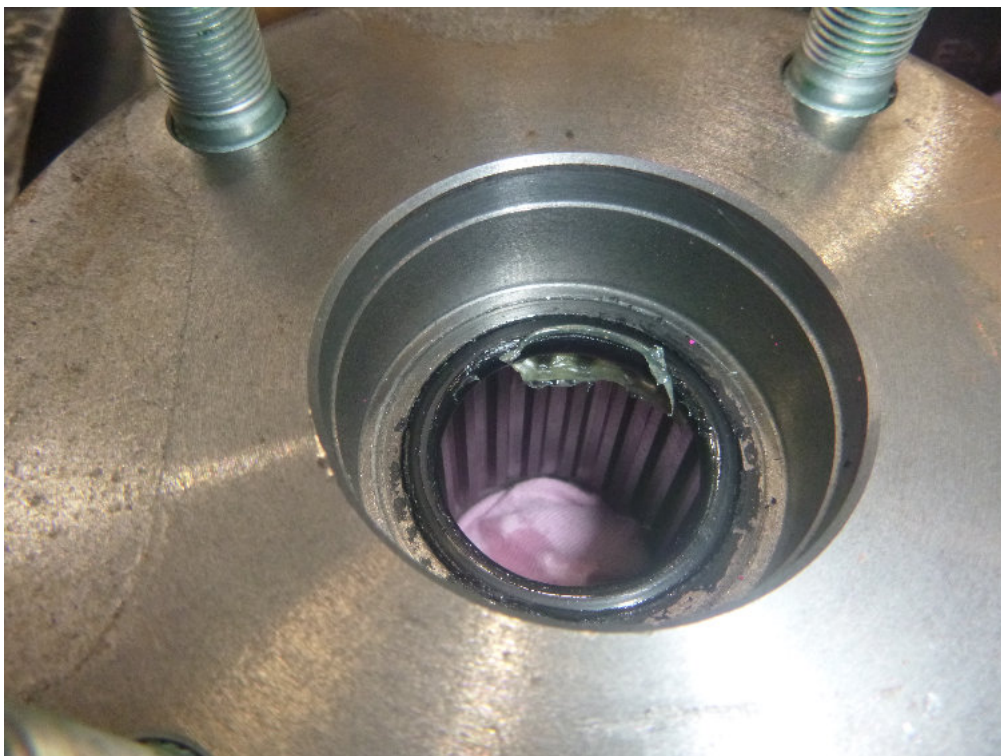
Drain transfer case oil (24mm socket)

Remove output shaft nut and then remove output flange

The O-ring behind the output flange nut will be reused

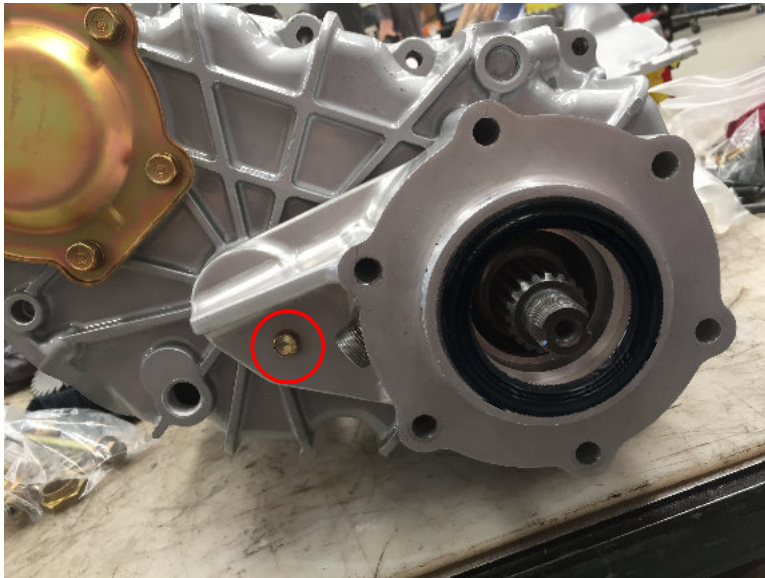
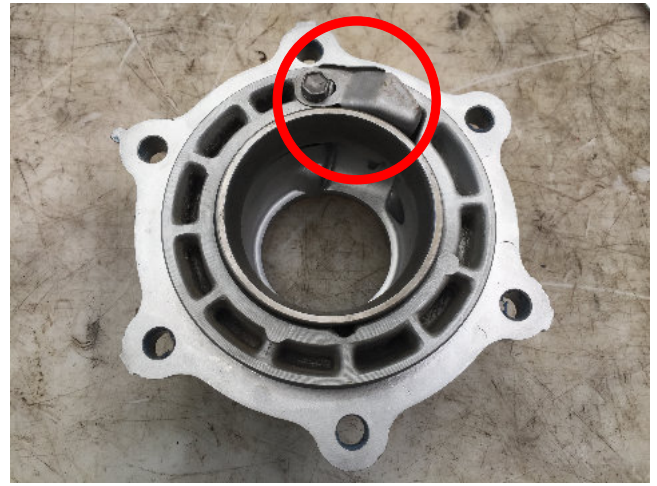
Remove speedo cable, speedo drive, idler shaft bolt and D washer

Remove the 6 bolts retaining cast alloy bearing retainer and remove the bearing retainer



Remove the bolt, oil slinger and bearing outer cone from the bearing retainer (circled) and refit to the new bearing retainer supplied.

Fit supplied oil seal to new bearing retaining housing

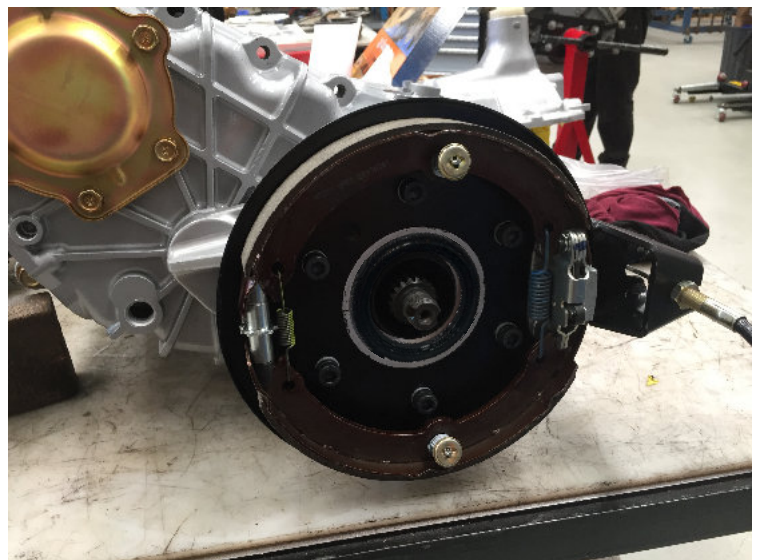


Using the supplied gasket and bolt (circled) attach new bearing housing to transfer case

Refit original speedo drive and cable

Fit the handbrake backing plate to the housing using the supplied socket headed cap screws and Nord-lock washers

Torque to 40 Nm



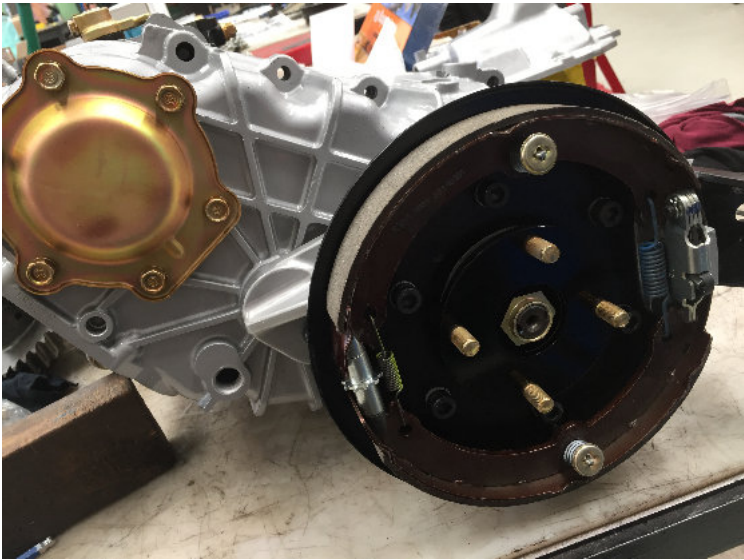
Using a press remove factory tailshaft studs



Apply Loctite 680 retaining compound to knurled area on new studs.

Carefully press new studs into output flange.





Fit the output flange with oring, fit and torque output shaft nut to 127 NM

Fit drum and nip up the factory tailshaft nuts to hold drum in place

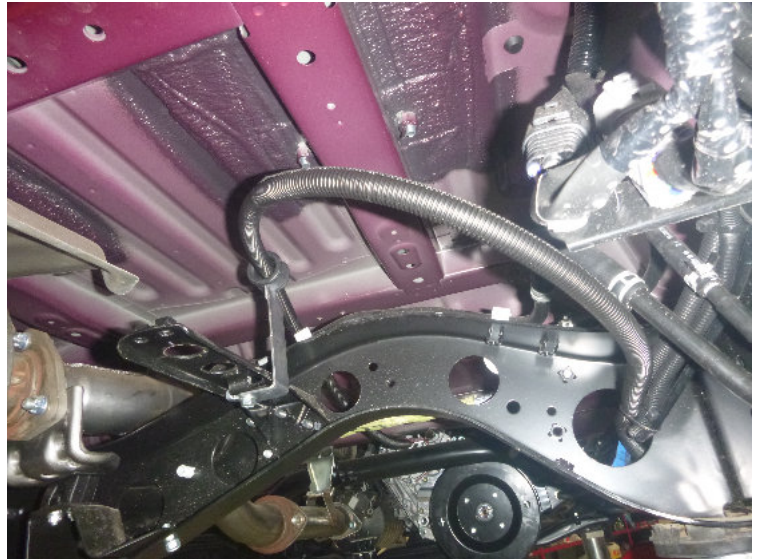
Place transfer case in neutral, adjust shoes with flat blade pushing downwards until drum locks up

Back off 2 or 3 clicks and check drum rotates freely



Place protective conduit on the handbrake cable and 'P' clip to chassis rail

Reuse factory handbrake cable bracket, saddle clamp and rubber floor seal from old cable.



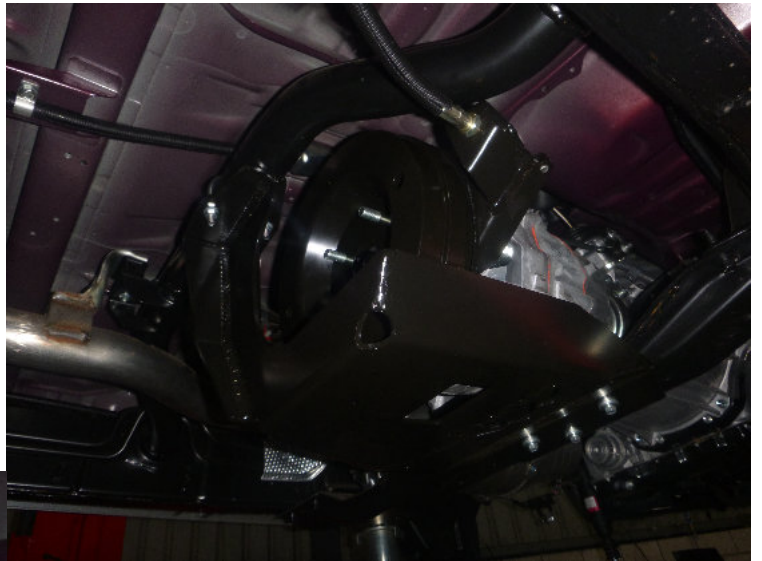
Fit tailshaft and torque nuts to 88 Nm
Refill transfer case with recommended oil

Reconnect handbrake cable to handbrake handle and adjust as per picture



Depending on vehicle you may need to open up the handbrake guide as circled above

Check for leaks and install new bash plate (if supplied) with factory bolts and supplied U clamp.



Final adjustment of handbrake to give 6 clicks on handbrake lever needs to be done using adjusting nuts at the transfer case.

4 - Road test

Road test vehicle, test handbrake, check for leaks and readjust shoes/cable if required

Terms and Conditions

Thank you for purchasing this product manufactured by Marks 4WD Adaptors. Components supplied in this kit are designed and machined for a specific conversion only as outlined in this guide. Modifications to or substitution for any of the components without the written consent of Marks 4WD Adaptors will void any possible warranty or return privileges.

The following instructions are intended as a guide and only for Marks 4WD Adaptors kits. If you do not fully understand the steps, modifications or changes required to complete the conversion, contact our sales department for more information. We recommend that you purchase a service manual pertaining to your vehicle for specific torque values, wiring diagrams and other related information.

Contact Information

Web: <http://www.marks4wd.com/>
Email: sales@marks4wd.com
Phone: +61 3 9552 6555
Address: 385-393 Lower Dandenong Rd
Dingley, Victoria, 3172
Australia