

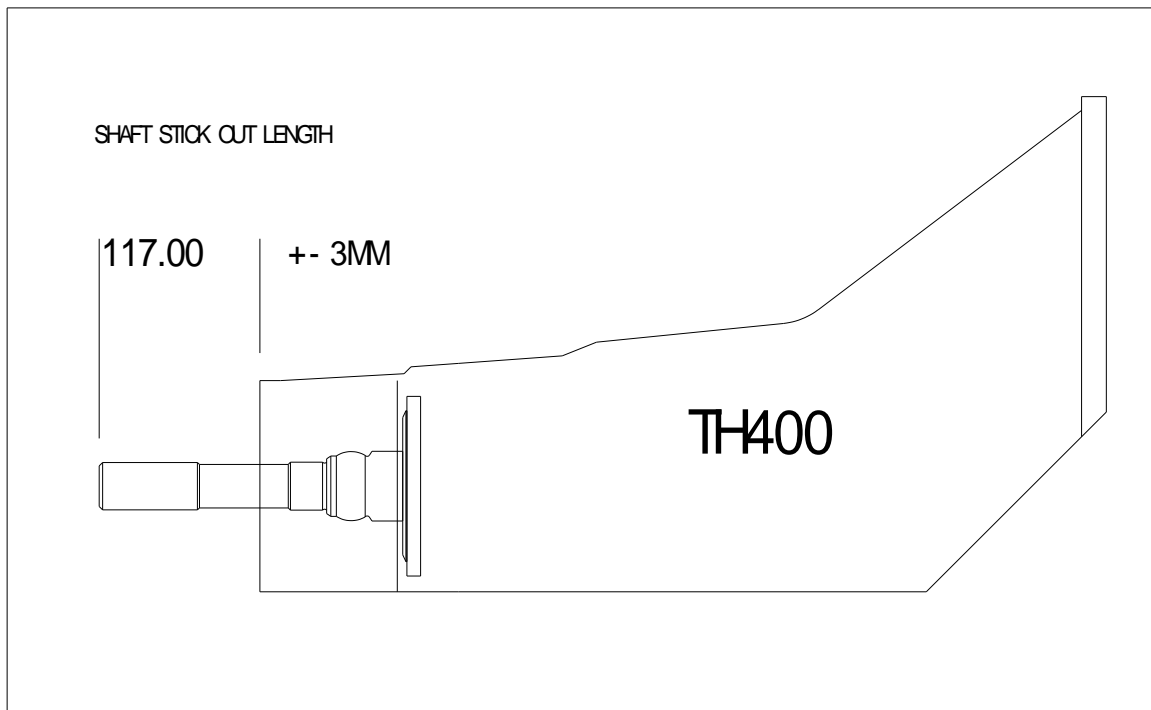
23/05/05



FITTING INSTRUCTIONS FOR
MFK355
TH400
TO
RANGE ROVER LT230 TRANSFER CASE

Thank you for purchasing a product manufactured by Marks 4WD Adaptors. The following instructions are intended as a guide. We recommend that you purchase a service manual pertaining to your vehicle for specific torque values, wiring diagrams and other related information.

NOTE. This kit is designed for use with the short tail housing 2WD TH400 automatic transmission. Refer to diagram for stick out length.



1. Remove the transfer case linkages and mounting brackets from the original transmission assembly.
2. Remove the main transmission assembly from the transfer case.
3. Remove the rear transfer case cover (tin hat).
4. Remove the coupler shaft and clean the transfer case thoroughly.

5. Remove the old transfer case, input seal and fit the new seal (4) to the housing (3). Make sure the spring side of the seal faces the transfer case.

6. Fit the other new seal (4) to the adaptor housing (5). Make sure the spring side of the seal faces the automatic transmission.

7. Place a smear of grease inside the seals.

8. Make sure the two dowels are fitted to the front of the transfer case housing. Using a suitable sealer, fit the adaptor housing (5) to the transfer case and secure it using the original bolts.

9. Fit the coupler shaft (8) through the adaptor housing (5) and into the transfer case, input gear, spline. Then fit the coupler shaft washer (2) with the tapered side facing the transfer case. Use loctite on the bolt (1) torque the bolt to 55-60 ft-lbs.

10. Refit the transfer case rear cover (tin hat).

11. Fit the TH400 to the adaptor housing (5) using the 6, socket head cap screws (6).

12. Refit the transfer case linkages to the adaptor housing (5).

NOTE. Range Rover have a number of different transmission mount bolt patterns. For this reason the new adaptor housing has been multi drilled.

13. Trial fit the original mounting to the adaptor to establish which bolt pattern you have. The holes in the adaptor not used to hold the mounting must be plugged using the 4, M12 grub screws (7), make sure you use loctite to seal the thread.

14. Mount the complete assembly into the vehicle.

NOTE. The automatic transmission and adaptor is longer than the transmission being replaced. For this reason drive shafts and transfer case mountings will require modification.

15. Refit front drive shaft and check the clearance between it and the side of the automatic transmission oil pan. Modify the sump if required by removing the corner section, alternatively an early model Land Rover drive shaft with 1300 series universals could be used to avoid pan modification.

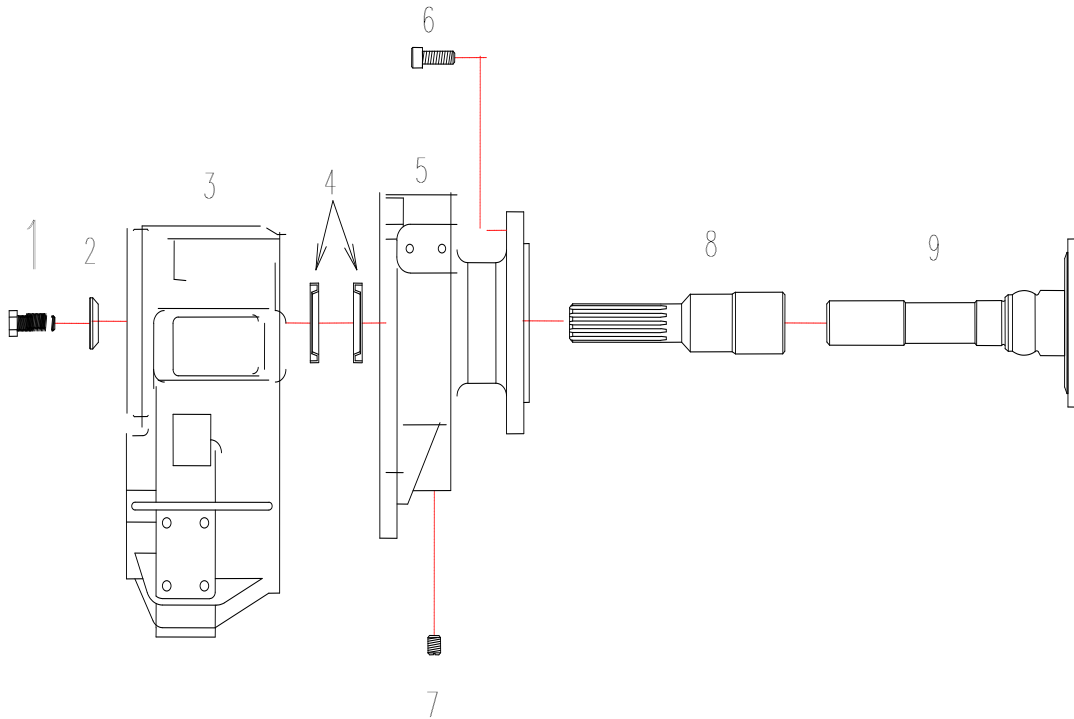
NOTE. When modifying an automatic sump make sure that the modifications do not interfere with the valve body.

All automatic transmissions require the use of a suitable transmission cooler. This can either be incorporated into the original radiator or a remote type can be used. The transmission shift mechanism can either be an after market Hurst or B&M floor shifter. Alternatively a T-bar set up can be used from an automatic Range Rover with modification.

HOLDEN V8 Engine Mountings

1. Fit the engine mounting brackets to the engine block. The larger bracket is fitted to the right side and the smaller one to the left side of the vehicle. **NOTE:** The brackets may need to be modified to clear the exhaust manifold and or sump as there are a number of variations in sump and manifold designs related to the donor engine.

PARTS LISTING



KEY	PART NO.	QTY.	DESCRIPTION
1	MFC046	1	BOLT M12x1.25x40
2	MFC358	1	WASHER COUPLER
3		1	TRANSFER CASE
4	TC12577	2	SEAL
5	MFC355	1	HOUSING TH400 TO RANGE
6	MFC200	6	SHCS 3/8"UNCx11/4"
7	SSSM1216	4	M12 GRUB SCREW
8	MFC356		SHAFT COUPLER TH400 TO RANGE ROVER

The components supplied in the kit are designed for specific type conversions. Modifications to any components without the written consent from Marks 4WD Adaptors will void any possible warranty or return privileges. Should you have any further questions that are not covered in the instruction sheet, please contact our sales department for assistance.

Remember an inexpensive phone call can save a costly mistake!

Remember an inexpensive phone call can save a costly mistake!

Proudly Manufactured by:

Marks 4WD Adaptors

385-393 Lower Dandenong Road, Dingley Vic. 3172

Tel: (03) 9552 6555, Fax: (03) 9551 8060,

E-Mail: sales@marks4wd.com

Catalogue: <http://www.marks4wd.com/>