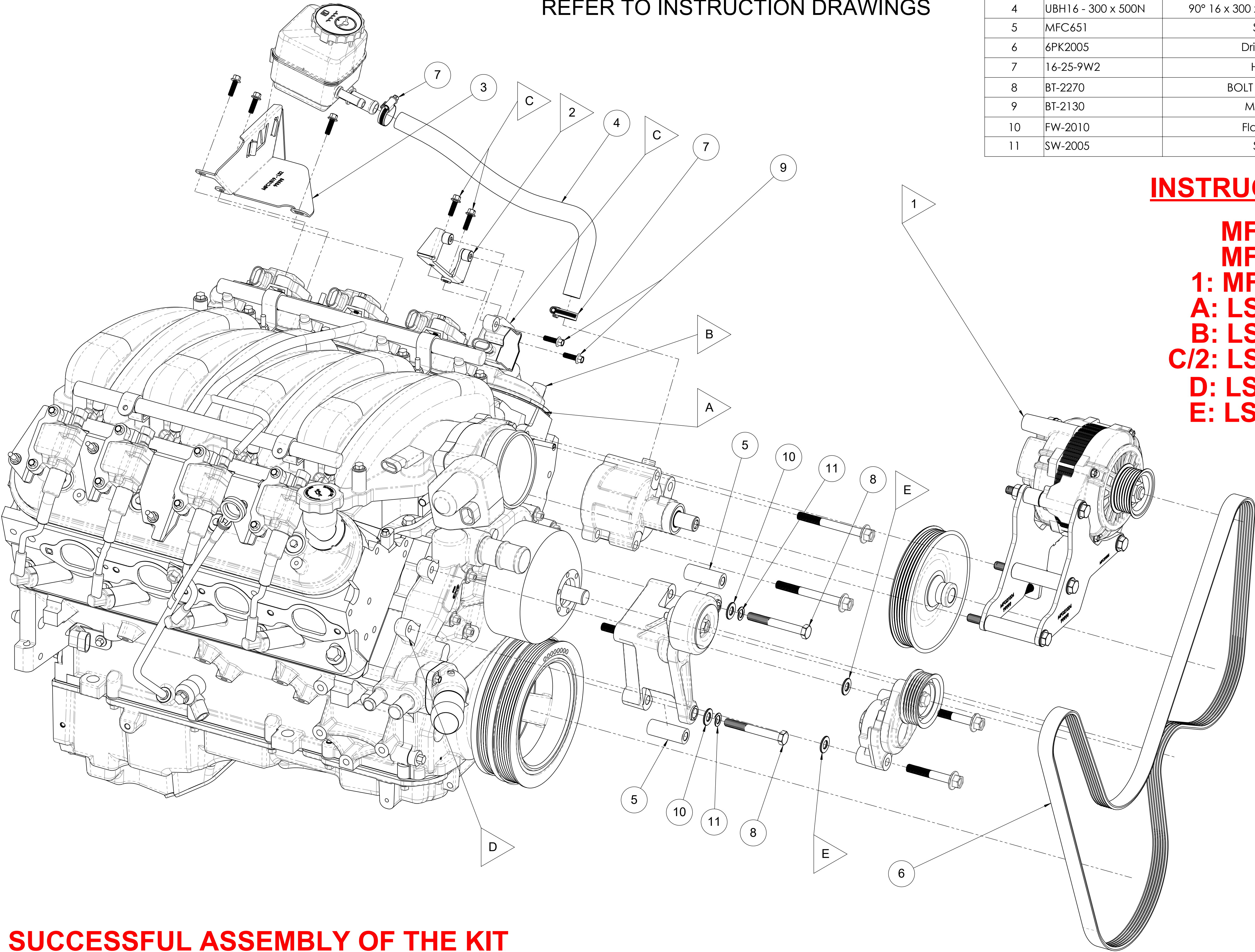


NOTE: FLAG ITEMS ►
REFER TO INSTRUCTION DRAWINGS

ITEM NO.	PART NUMBER	DESCRIPTION	QTY
1	MFG21004	LS1/LS2 12v Alternator Relocation LH	1
2	MFC20020	Bracket - AUX Alternator Setup Coil Relocation	1
3	MFC1819-LS2VE	Power Steering Reservoir Bracket - LS2/3 VE - VF	1
4	UBH16 - 300 x 500N	90° 16 x 300 x 500 Universal Hose Bend - Fuel & Oil	1
5	MFC651	Spacer 10 x 20 x 51 L P/ST	2
6	6PK2005	Drive Belt - Poly Rib (2005mm)	1
7	16-25-9W2	Hose Clamp - 16 to 25mm	2
8	BT-2270	BOLT - M10 X 1.5 X 80mm - H/T - Z/P	2
9	BT-2130	M6 x 1.25 x 20 - Capture Bolt	2
10	FW-2010	Flat Washer - M10 x 22 x 2mm	4
11	SW-2005	Spring Washer - M10 - S/S	2

INSTRUCTION DRAWINGS
MFK50180-VT-VY-SHT-1
MFK50180-VT-VY-SHT-2
1: MFG21004
A: LS - ACCMOD - 01
B: LS - ACCMOD - 02
C/2: LS - ACCMOD - 04
D: LS - INFO - 02
E: LS - INFO - 05



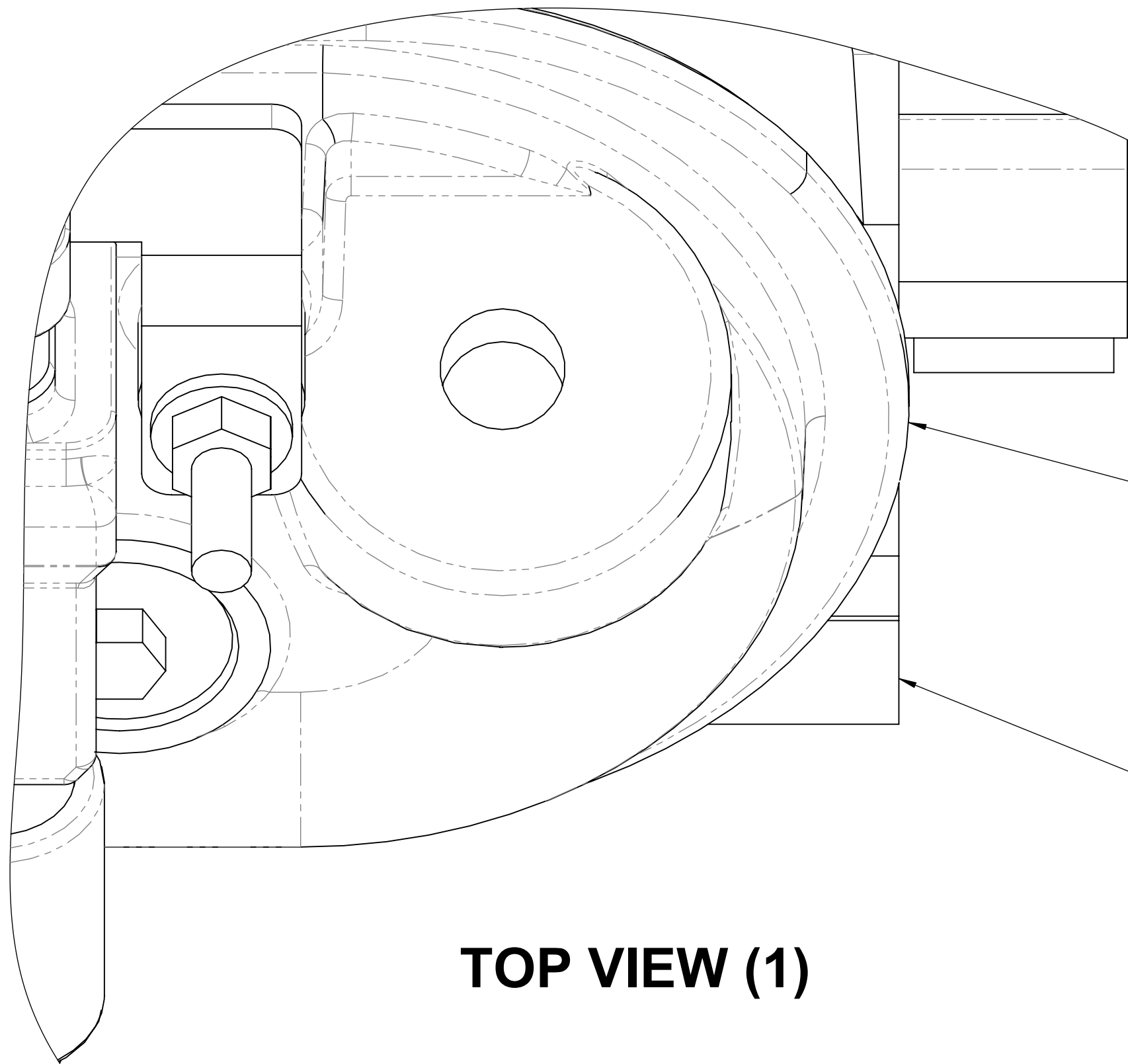
THE SUCCESSFUL ASSEMBLY OF THE KIT
REQUIRES THE MODIFICATION PROCEDURES
IN THE INSTRUCTION DRAWINGS LISTED ON
THIS SHEET TO BE CAREFULLY FOLLOWED

DRAWN		GDK 06/05/2021	TITLE:		Accessory Kit - LH 12v Alt	
DRAWING CHECKED		PAM 06/05/2021	SCALE: 1:2.5		DRAWING/PART NUMBER	
FINISHED WEIGHT: kg			DRAWING 1 of 8		MFK50180-VT-VY	
					REV No. 0	

MARKS4WD
385-393 LOWER DANDENONG ROAD,
DINGLEY VICTORIA, 3172
A.B.N. 28 153 842 829

LS - SERIES ROCKER COVER LIP MODIFICATION

STANDARD ROCKER COVER



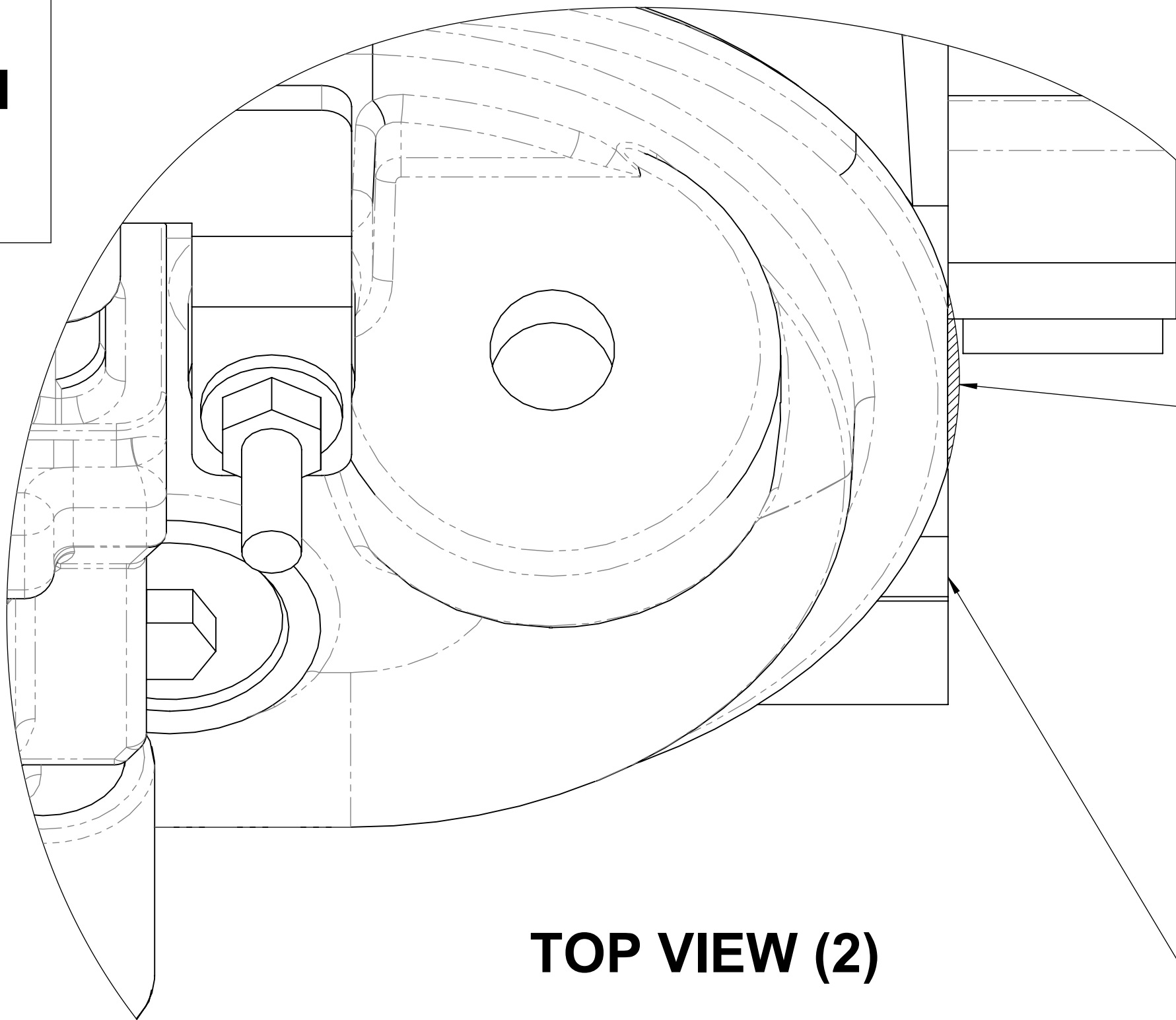
TOP VIEW (1)

THE LIP MODIFICATION SHOWS THE DRIVER SIDE CYLINDER HEAD FITTED WITH THE PASSENGER SIDE ROCKER COVER

PASSENGER SIDE ROCKER COVER LIP SITS ABOVE THE CYLINDER HEAD

DRIVER SIDE CYLINDER HEAD FACE SHOWN

MODIFIED ROCKER COVER



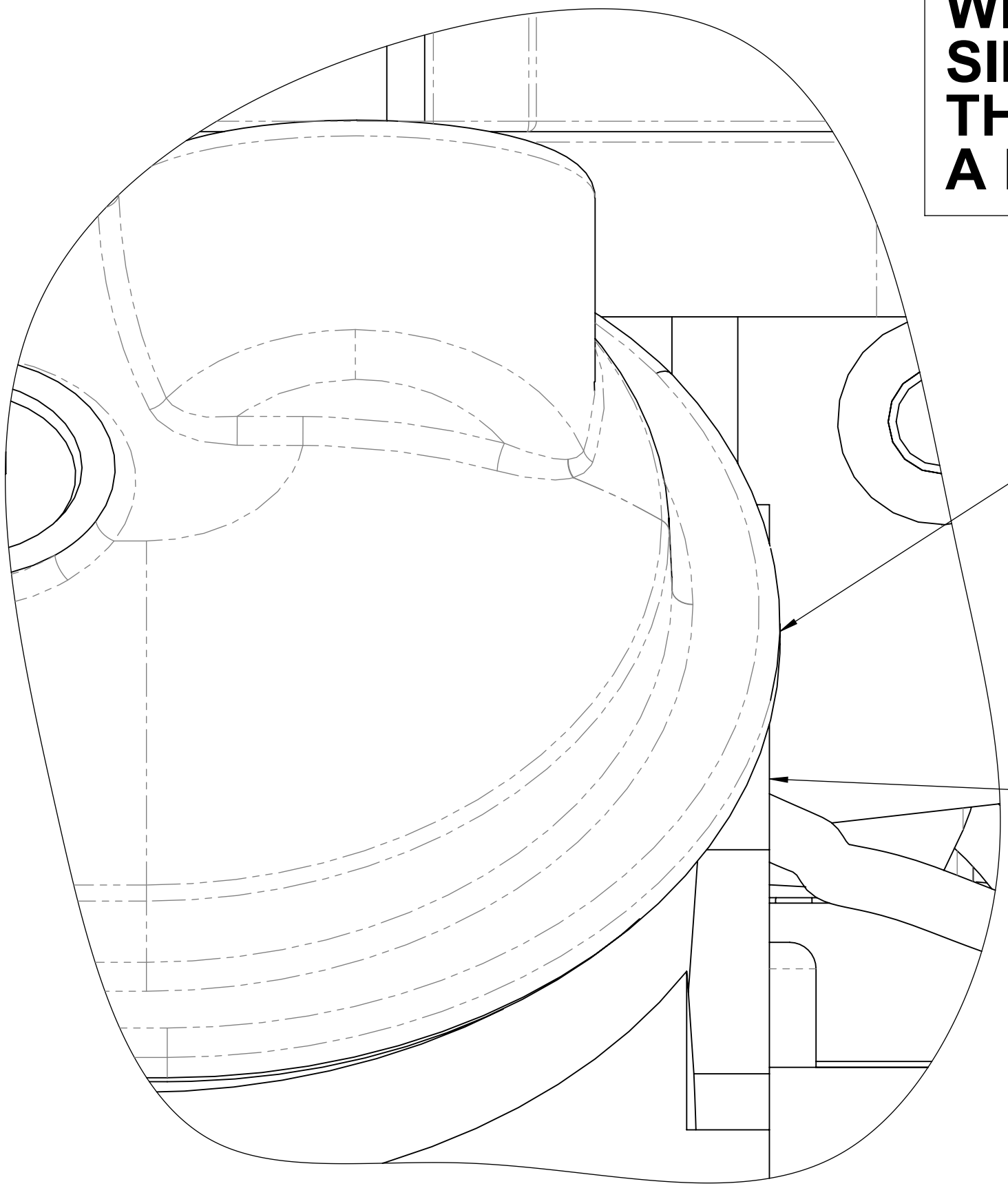
TOP VIEW (2)

DRIVER SIDE ROCKER COVER LIP REMOVE THE HATCHED AREA AS SHOWN

SHAVED ROCKER LIP SHOULD LOOK LIKE THE SIDE VIEW (2) BELOW

DRIVER SIDE CYLINDER HEAD FACE SHOWN

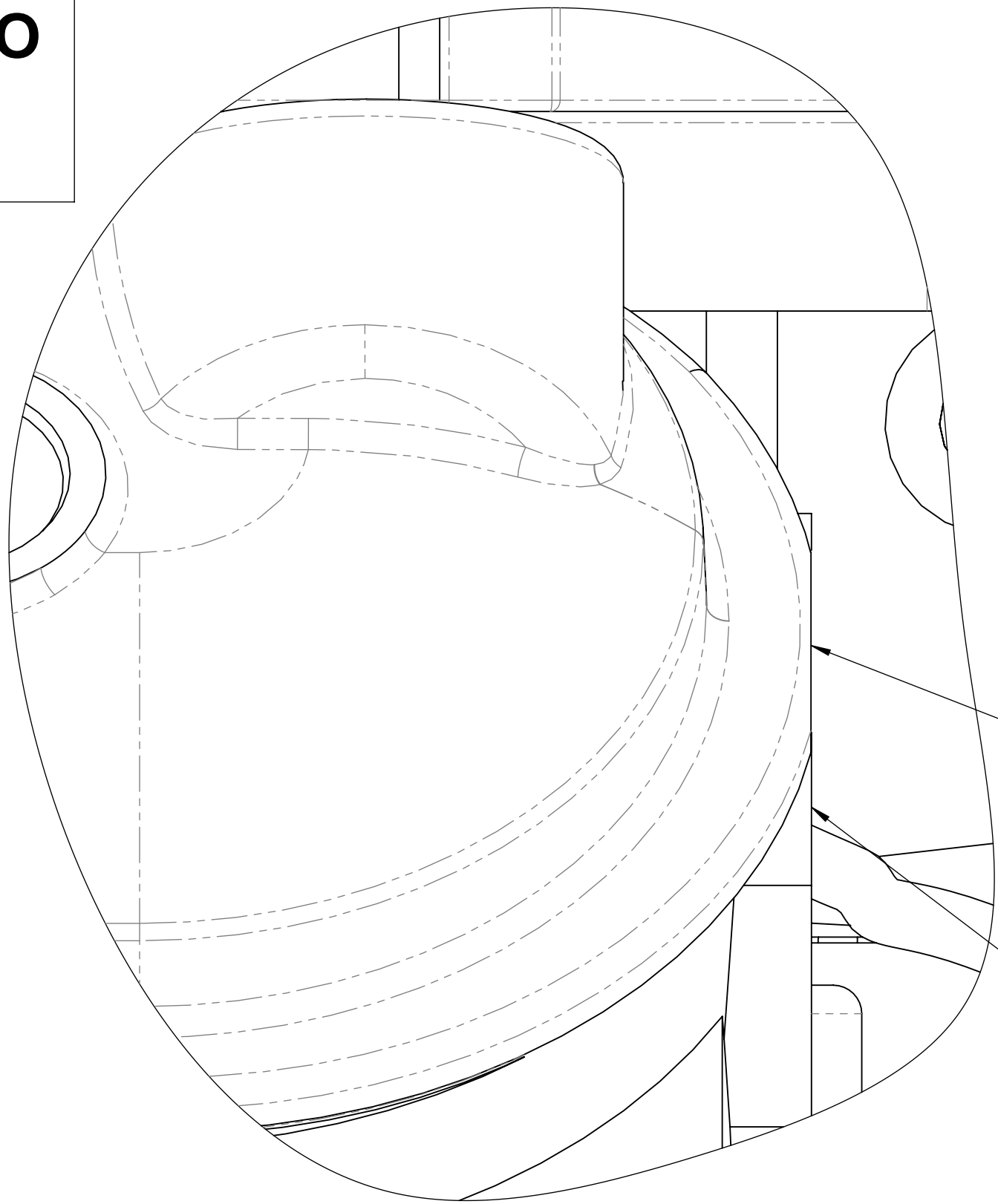
THE ROCKER COVER LIP MODIFICATION WILL ALSO BE REQUIRED FOR THE DRIVER SIDE ROCKER COVER WHEN IT IS FITTED TO THE PASSENGER SIDE CYLINDER HEAD IF A LH ACCESSORY KIT IS TO BE FITTED



SIDE VIEW (1)

PASSENGER SIDE ROCKER COVER LIP SITS ABOVE THE CYLINDER HEAD

DRIVER SIDE CYLINDER HEAD FACE SHOWN



SIDE VIEW (2)

THE LIP OVER HANG MUST BE SHAVED BACK TO THE CYLINDER HEAD FACE

CAUTION: DO NOT SHAVE PAST THE CYLINDER HEAD & ENCROACH INTO THE O RING GROOVE

PASSENGER SIDE ROCKER COVER LIP SHAVED

DRIVER SIDE CYLINDER HEAD FACE SHOWN

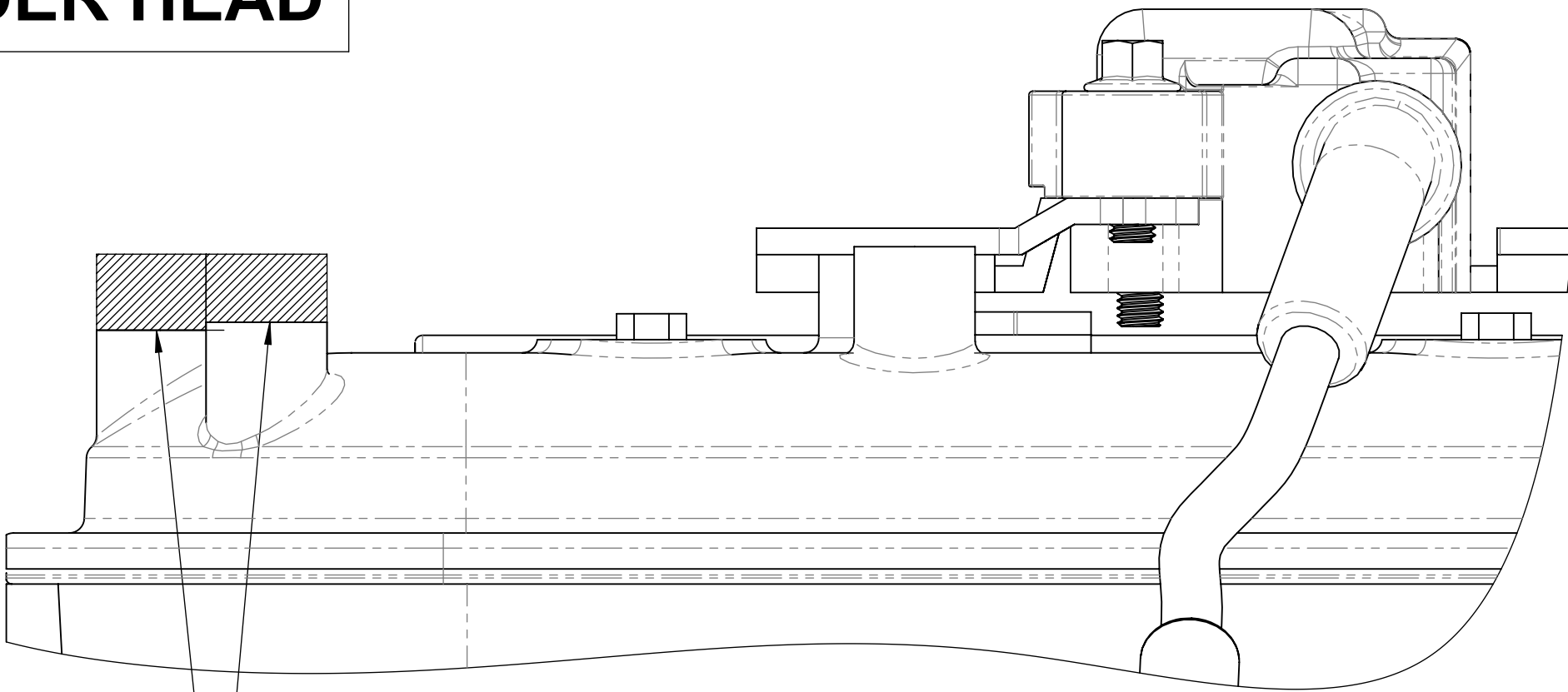
DRAWN	GDK 06/05/2021	TITLE: LS - Series Rocker Cover Lip Modification		
DRAWING CHECKED	PAM 06/05/2021	SCALE:2:1 DRAWING 1 of 1	DRAWING/PART NUMBER LS - ACCMOD - 01	REV No. 0
FINISHED WEIGHT: kg				

LS - SERIES ROCKER COVER COIL BOSS MODIFICATION
(ROCKER COVERS IN FACTORY POSITION)

STANDARD ROCKER COVER

THE BOSS MODIFICATION
SHOWS THE PASSENGER SIDE
ROCKER COVER ON THE
PASSENGER SIDE CYLINDER HEAD

MODIFIED ROCKER COVER
(OPTION-1)



SIDE VIEW (2)

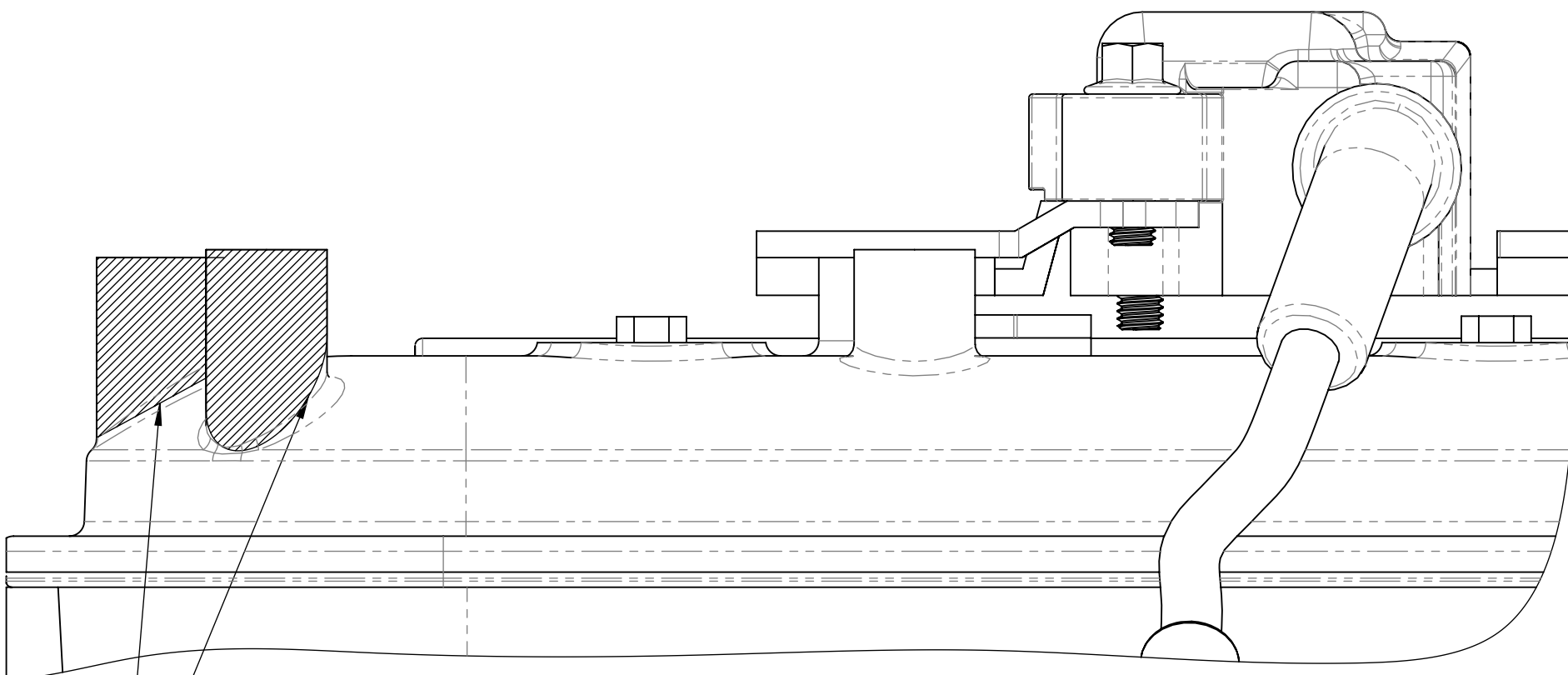
PASSENGER SIDE ROCKER COVER

REMOVE THE HATCHED AREA
AS SHOWN ABOVE UNTIL THE
CLEARANCE FOR THE ACCESSORY
KIT IS ACHIEVED

THE STANDARD HEIGHT OF THE
2 MOUNTING BOSSES NEED TO BE
MODIFIED

DECIDE FROM EITHER
(OPTION-1) OR (OPTION-2)

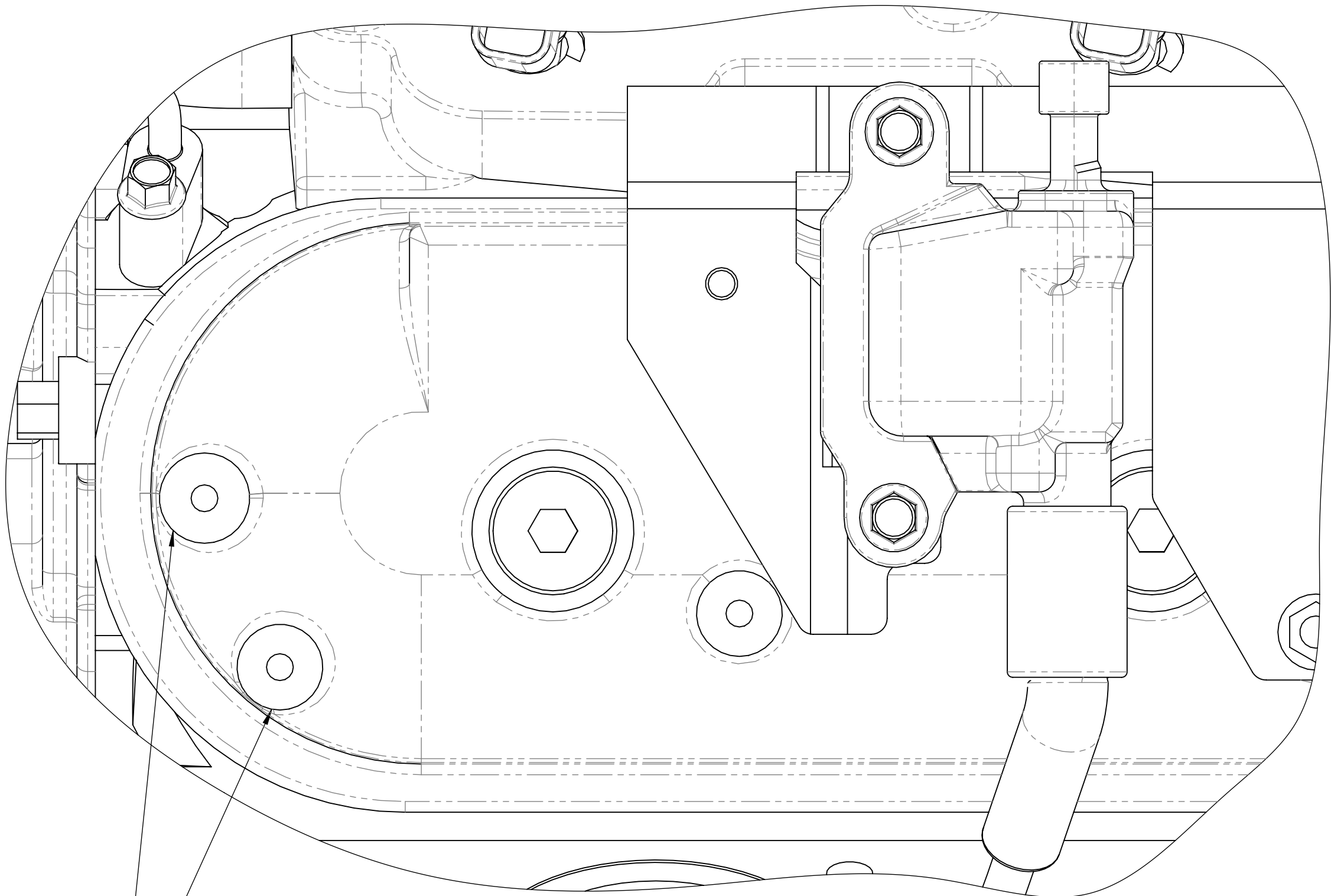
MODIFIED ROCKER COVER
(OPTION-2)



SIDE VIEW (3)

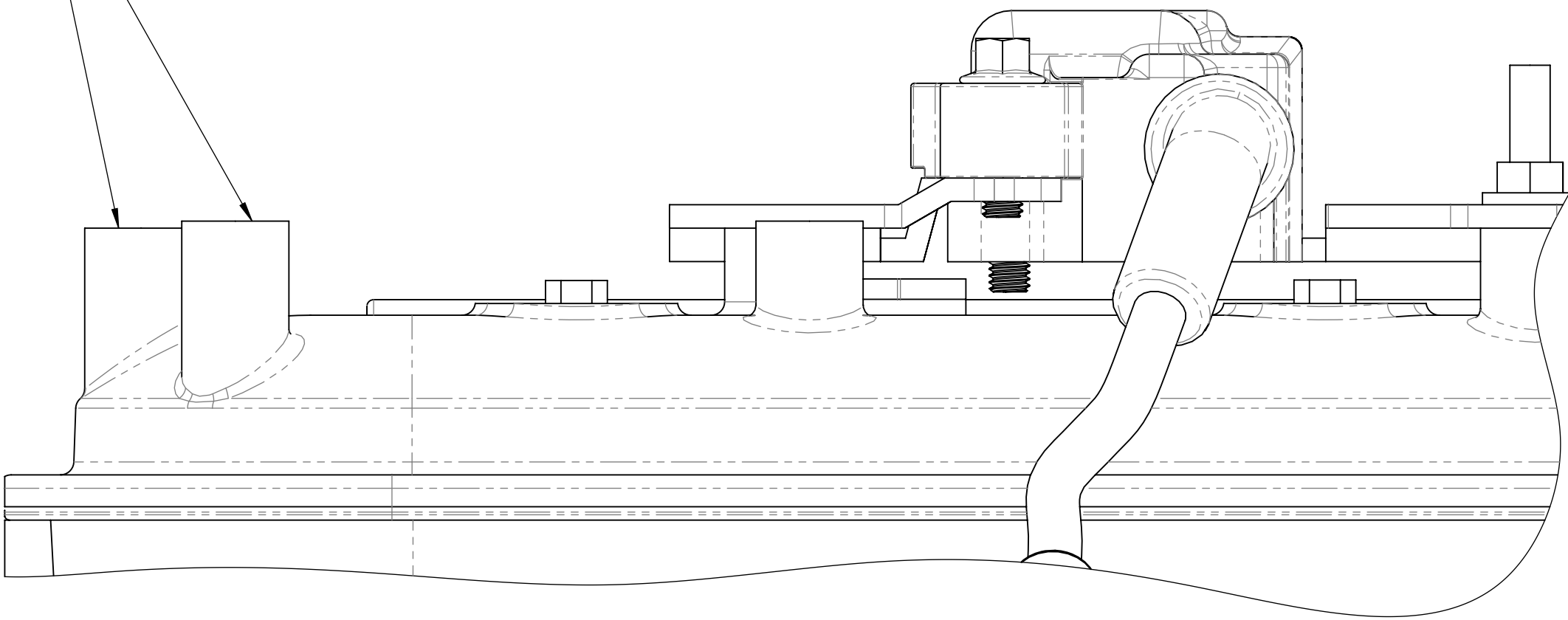
PASSENGER SIDE ROCKER COVER

REMOVE THE HATCHED AREA
AS SHOWN ABOVE & SMOOTH OFF
TO MATCH SHAPE OF COVER



TOP VIEW (1)

MOUNTING
BOSSES TO
BE MODIFIED

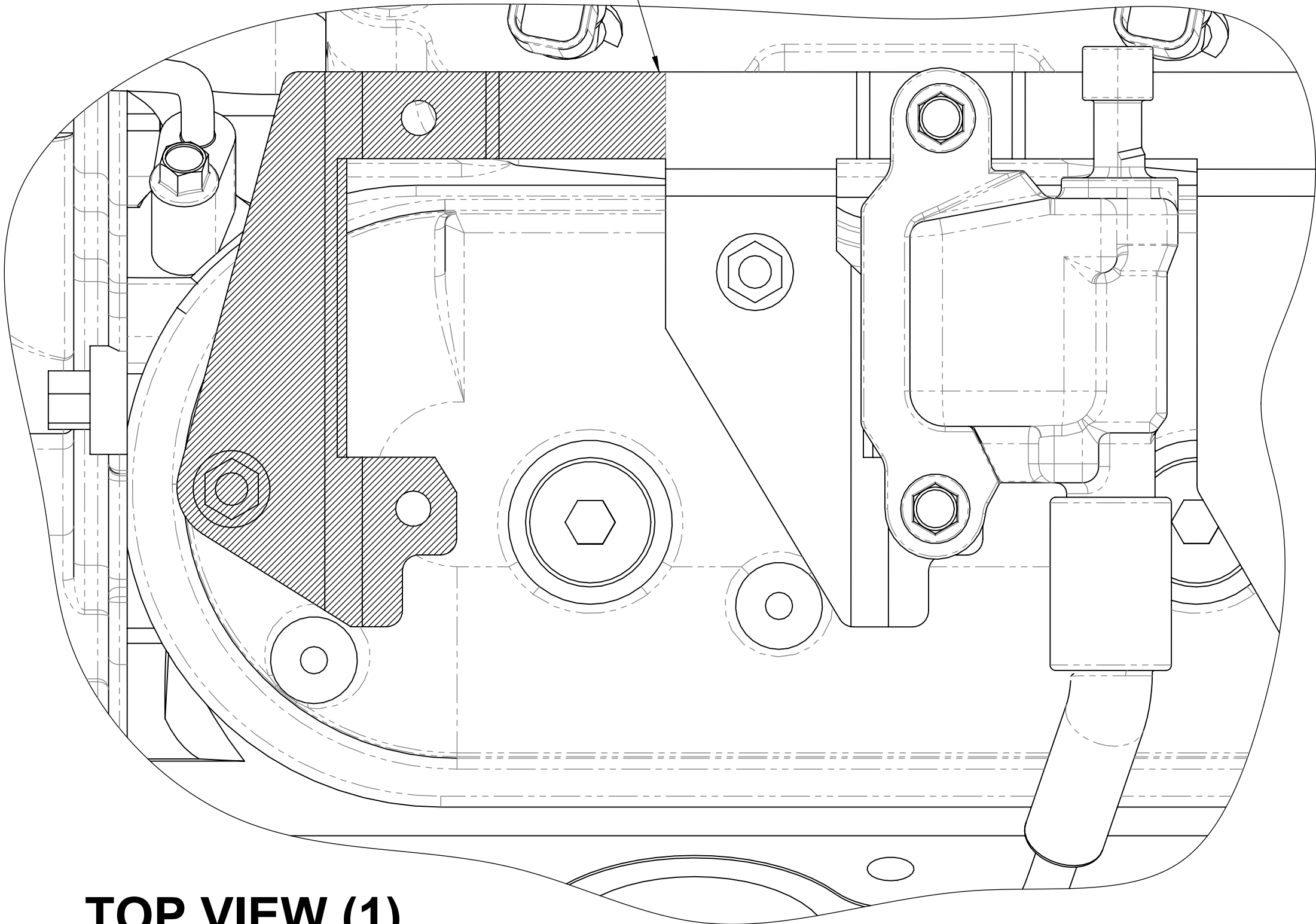


SIDE VIEW (1)

LS - SERIES PASSENGER SIDE COIL BRACKET MODIFICATION
FOR COIL RELOCATION BRACKET MFC20020
(ROCKER COVERS IN FACTORY POSITION)

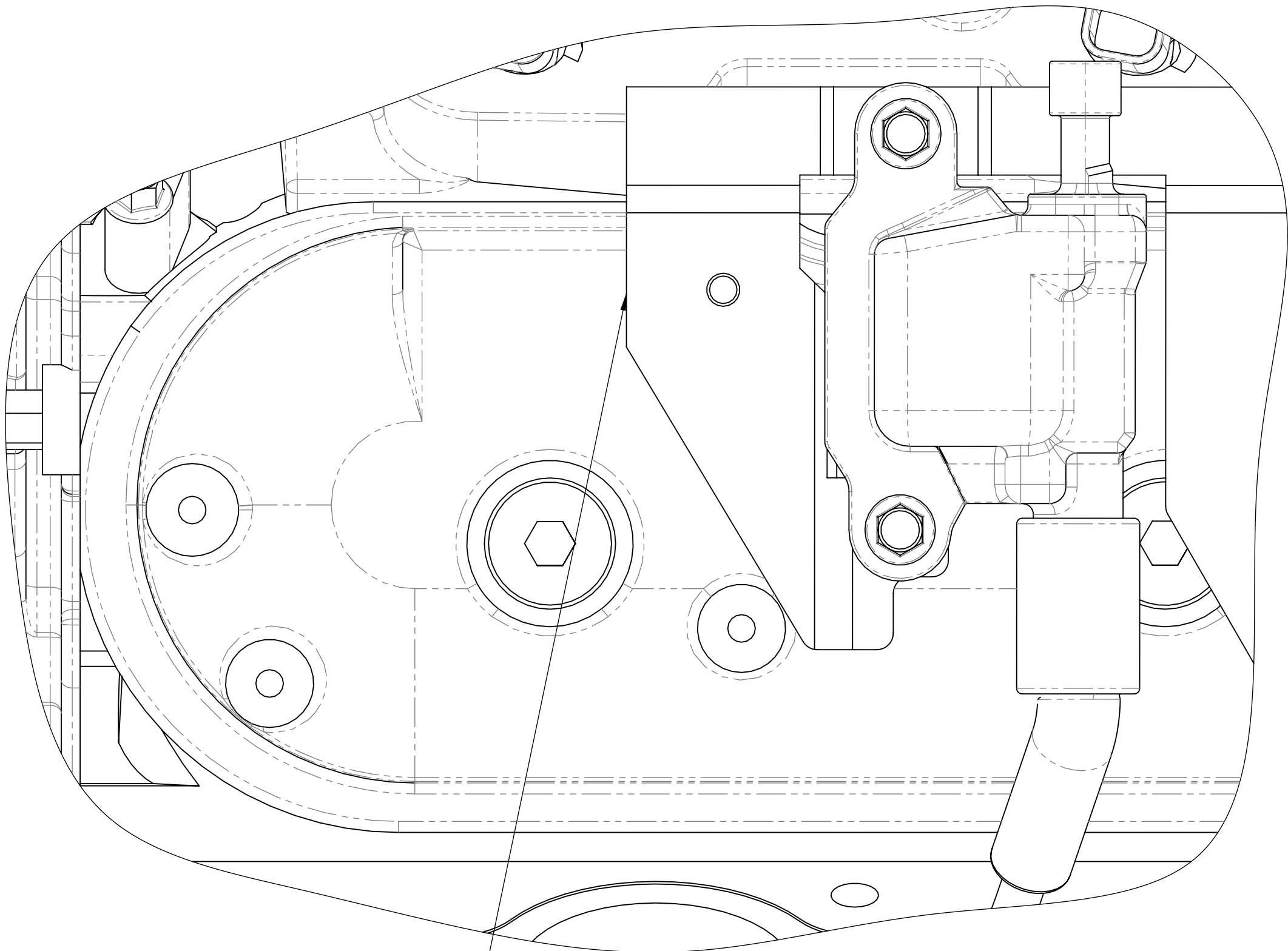
REMOVE THE HATCHED AREA
AS SHOWN TO ALLOW
FITMENT OF THE COIL
RELOCATION BRACKET

STANDARD PASSENGER SIDE
COIL BRACKET



TOP VIEW (1)

MODIFIED PASSENGER SIDE
COIL BRACKET



TOP VIEW (2)

REUSE FACTORY BOLTS

MFC20020

REASSEMBLE THE LS COIL TO
MFC20020 IN THE ORIENTATION
SHOWN THEN FASTEN MFC20020
TO THE MODIFIED COIL BRACKET
& MOUNTING BOSS ON THE ROCKER
COVER AS SHOWN IN THE
EXPLODED VIEW

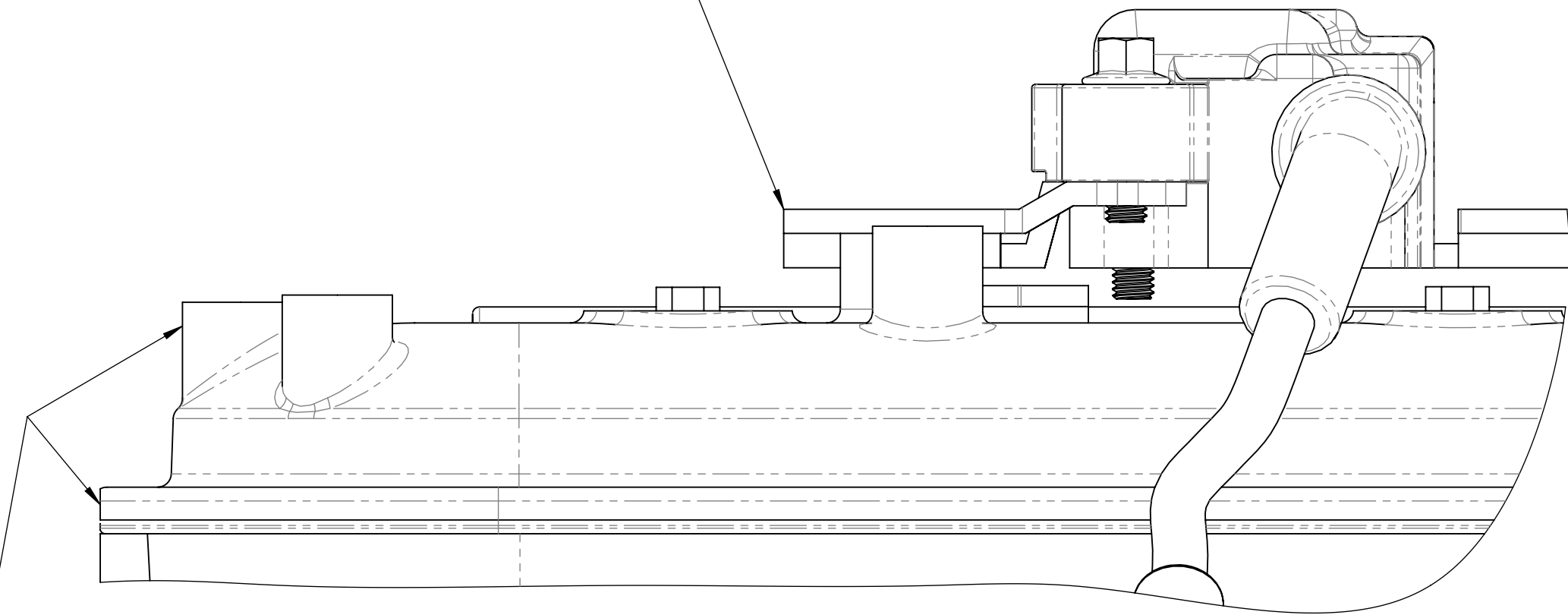
ROCKER COVER
MODIFICATION
IS REQUIRED BEFORE
COIL RELOCATION

REFER TO DRAWING:-

(LS - ACCMOD - 01)
LS - SERIES ROCKER COVER
LIP MODIFICATION

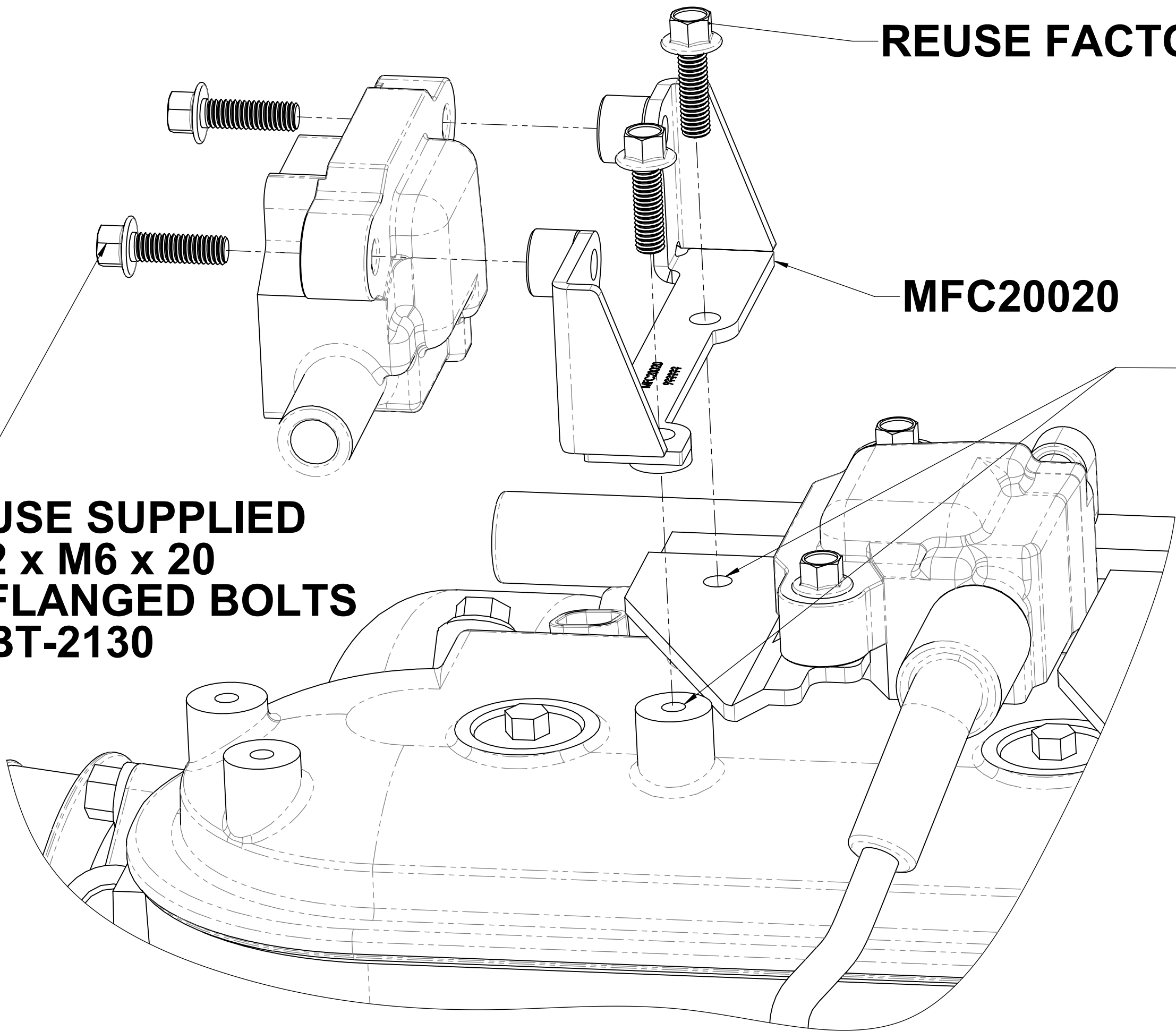
(LS - ACCMOD - 02)
LS - SERIES ROCKER COVER
COIL BOSS MODIFICATION

MODIFIED PASSENGER SIDE
COIL BRACKET AS SHOWN IN
TOP VIEW (2) & SIDE VIEW (2)



SIDE VIEW (2)

USE SUPPLIED
2 x M6 x 20
FLANGED BOLTS
BT-2130

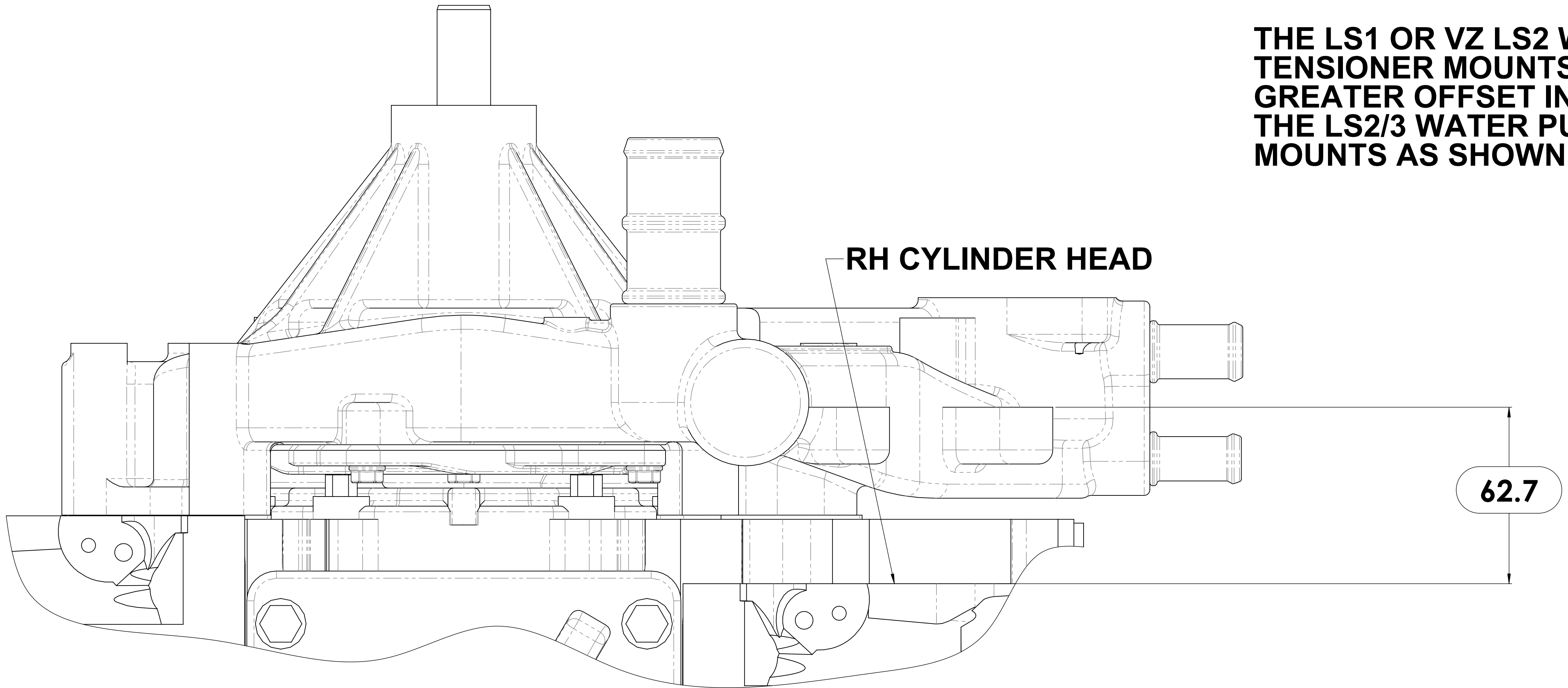


EXPLODE VIEW

DRAWN	GDK 06/05/2021	TITLE:	LS - Series Passenger Side Coil Bracket Modification
DRAWING CHECKED	PAM 06/05/2021	SCALE:1:2:1	DRAWING/PART NUMBER
FINISHED WEIGHT: kg		DRAWING 1 of 1	REV No. 0
		LS - ACCMOD - 04	

LS WATER PUMP TENSIONER MOUNT OFFSETS

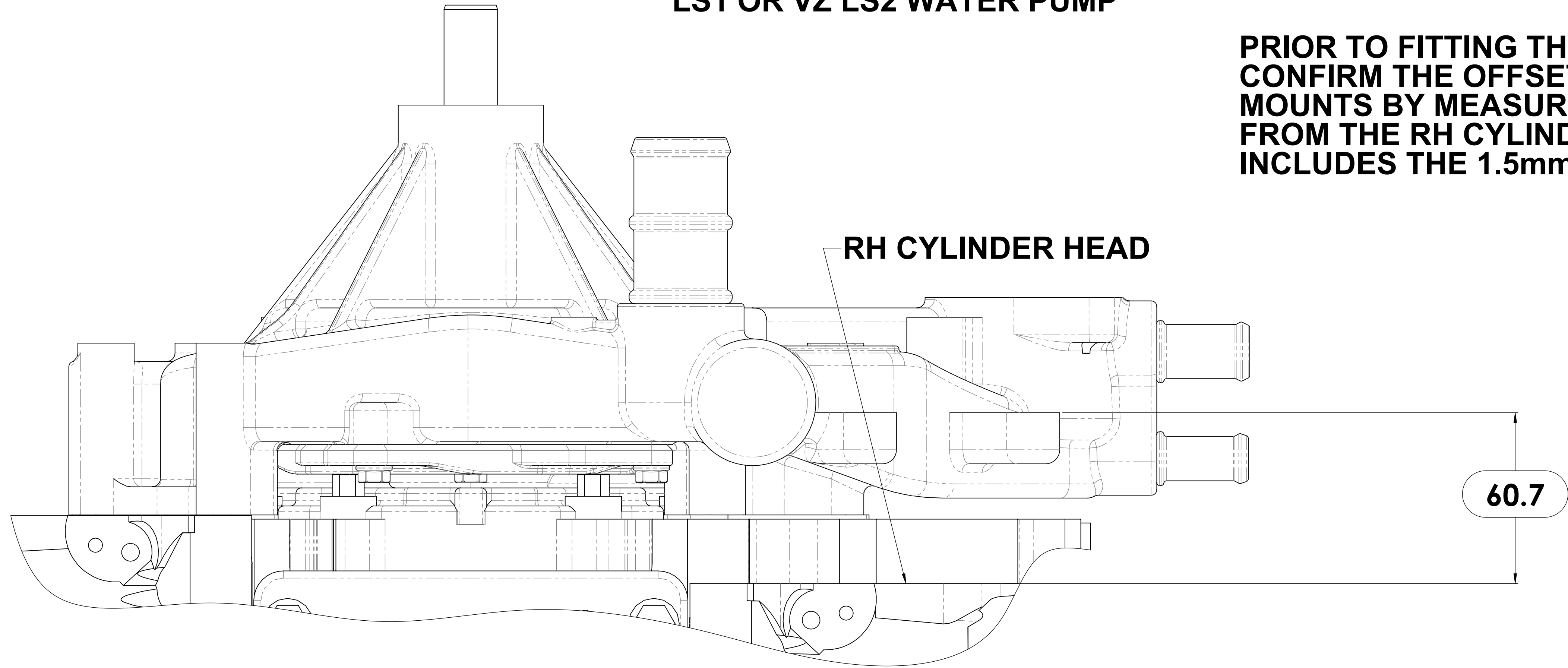
THE LS1 OR VZ LS2 WATER PUMP TENSIONER MOUNTS WILL HAVE A 2mm GREATER OFFSET IN RELATION TO THE LS2/3 WATER PUMP TENSIONERS MOUNTS AS SHOWN



62.7 LS1 TENSIONER MOUNT OFFSET (mm)


LS1 OR VZ LS2 WATER PUMP

PRIOR TO FITTING THE ACCESSORY KIT CONFIRM THE OFFSET OF THE TENSIONER MOUNTS BY MEASURING THE OFFSET FROM THE RH CYLINDER HEAD THE OFFSET INCLUDES THE 1.5mm WATER PUMP GASKET



60.7 LS2/3 TENSIONER MOUNT OFFSET (mm)

LS2/3 WATER PUMP

				385-393 LOWER DANDENONG ROAD, DINGLEY, VICTORIA, 3172 A.B.N. 28 153 842 829	
DRAWN	GDK 06/05/2021	TITLE: LS Water Pump Tensioner Mount () Offsets			
DRAWING CHECKED	PAM 06/05/2021				
FINISHED WEIGHT: kg		SCALE:1:1 DRAWING 1 of 1	DRAWING/PART NUMBER LS - INFO - 02		REV No. 0
3	14	15	16		A

MARKS 4WD LS WATER PUMP

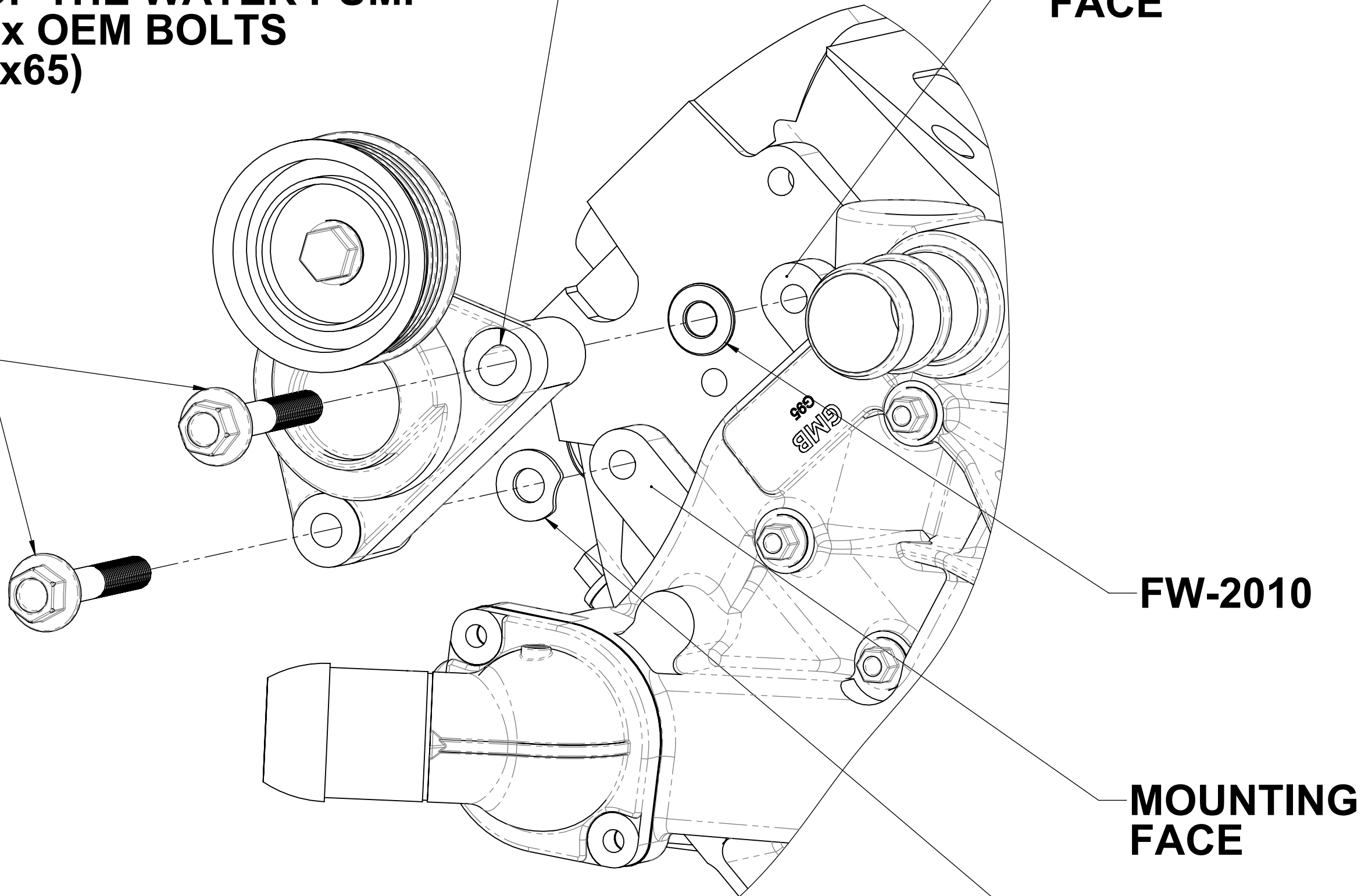
1:- SET THE TENSIONER MOUNT OFFSET

2:- MOUNT THE TENSIONER (ORIENT AS SHOWN) WITH THE SUPPLIED SPACERS POSITIONED BETWEEN THE TENSIONER & THE MOUNTING FACES OF THE WATER PUMP USING 2 x OEM BOLTS (M10x1.5x65)

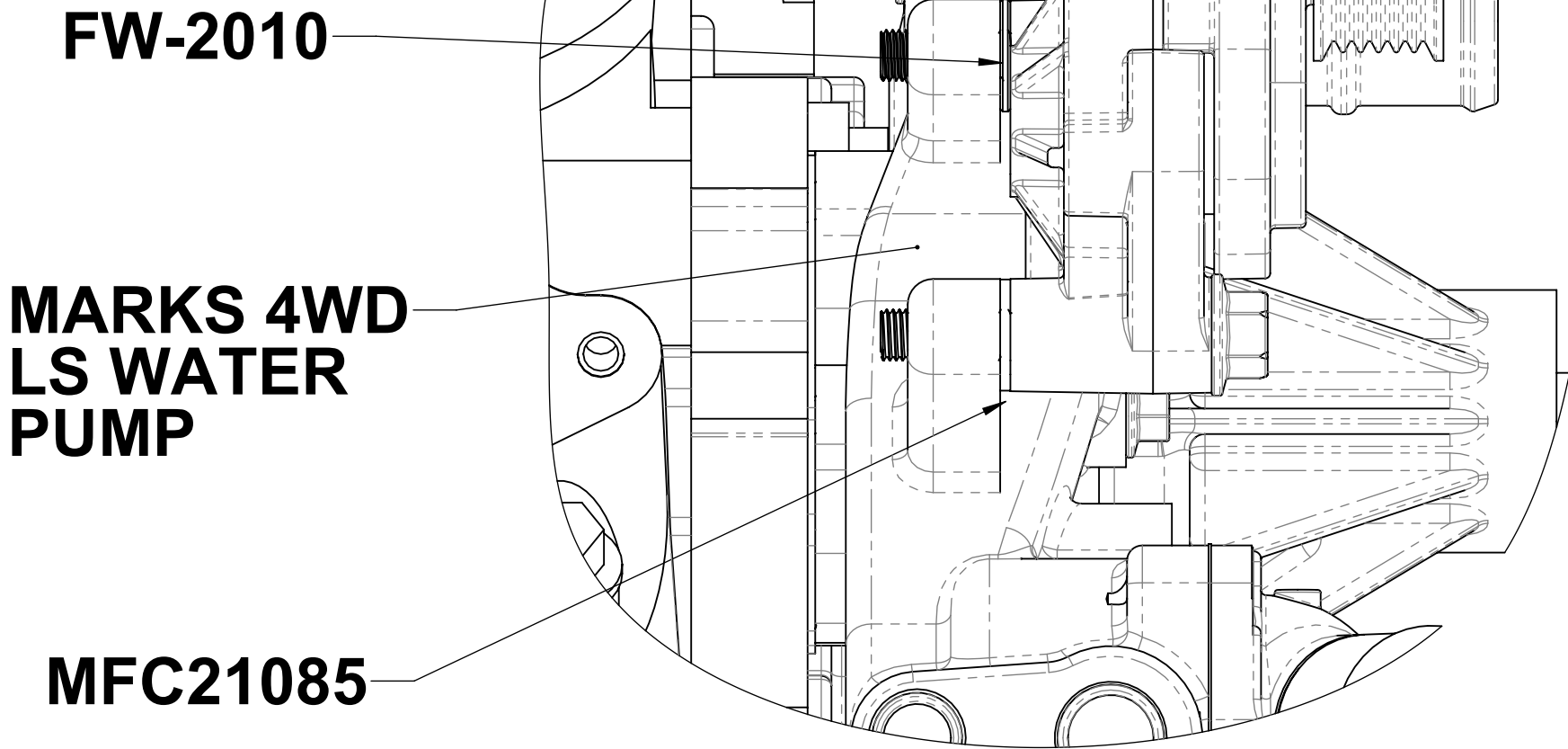
LS1/ VZ LS2 TENSIONER ASSEMBLY OEM POSITION

FOLLOW STEPS 1,2 IN THAT ORDER

ELONGATED SLOT OF THE TENSIONER
MOUNTING FACE



1:- TENSIONER OFFSET IS IN (mm) 62.7 (LS - INFO - 02)



SIDE VIEW (1)

THE SUPPLIED SPACERS MFC21085 & FW2010 ARE 2mm THICK & SIT DIRECTLY ON THE MOUNTING FACES OF THE MARKS 4WD LS WATER PUMP AND FIX THE CORRECT OFFSET @ 62.7mm AS SHOWN IN SIDE VIEW (1)

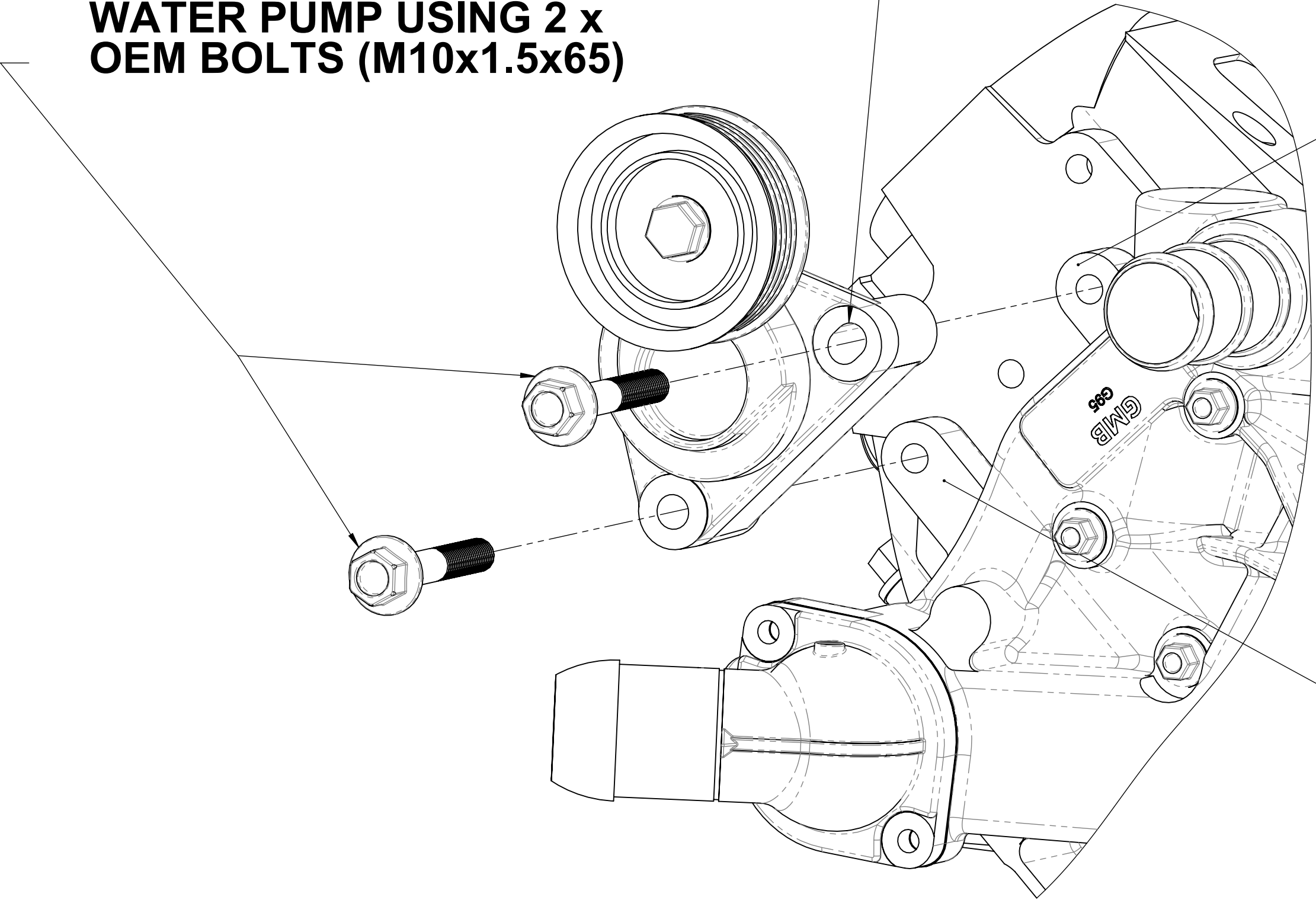
OEM LS1/VZ LS2 WATER PUMP

1:- SET THE TENSIONER MOUNT OFFSET

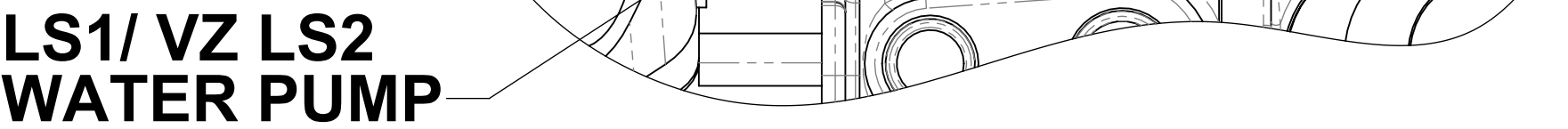
FOLLOW STEPS 1,2 IN THAT ORDER

2:- MOUNT THE TENSIONER (ORIENT AS SHOWN) DIRECTLY TO THE MOUNTING FACE OF THE WATER PUMP USING 2 x OEM BOLTS (M10x1.5x65)

ELONGATED SLOT OF THE TENSIONER
MOUNTING FACE
MOUNTING FACE



1:- TENSIONER OFFSET IS IN (mm) 62.7 (LS - INFO - 02)



SIDE VIEW (2)

VERIFY THE CORRECT OEM OFFSET FOR THE LS1 WATER PUMP IS @ 62.7mm AS SHOWN IN SIDE VIEW (2)