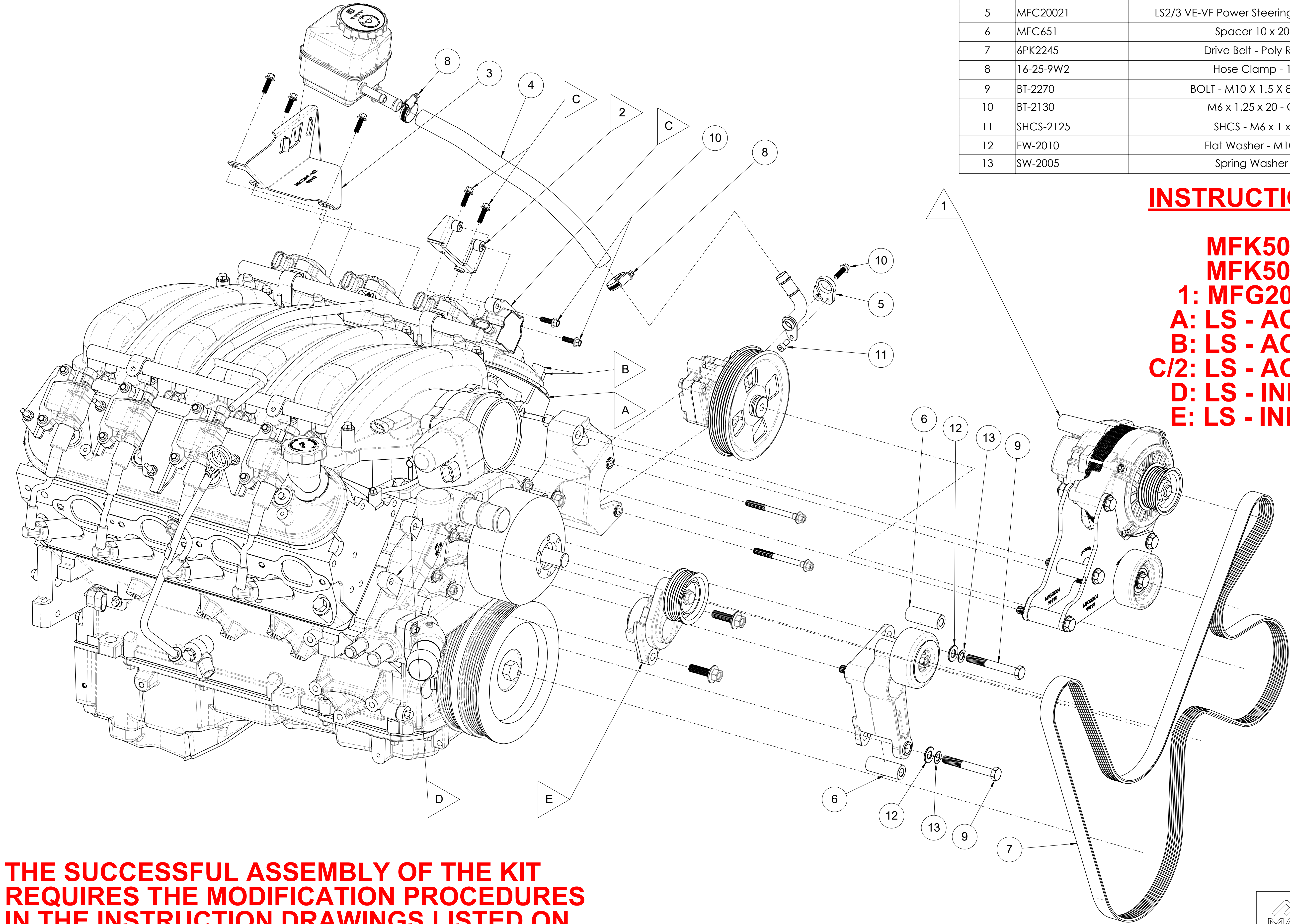


NOTE: FLAG ITEMS ►
REFER TO INSTRUCTION DRAWINGS

ITEM NO.	PART NUMBER	DESCRIPTION	QTY
1	MFG20004	LS2/LS3 12v Alternator Relocation LH	1
2	MFC20020	Bracket - AUX Alternator Setup Coil Relocation	1
3	MFC1819-LS2VE	Power Steering Reservoir Bracket - LS2/3 VE - VF	1
4	MFC2120	Hose - Power Steering - 16mm x 400mm	1
5	MFC20021	LS2/3 VE-VF Power Steering Barb Rotate Adaptor	1
6	MFC651	Spacer 10 x 20 x 51 L P/ST	2
7	6PK2245	Drive Belt - Poly Rib (2245mm)	1
8	16-25-9W2	Hose Clamp - 16 to 25mm	2
9	BT-2270	BOLT - M10 X 1.5 X 80mm - H/T - Z/P	2
10	BT-2130	M6 x 1.25 x 20 - Capture Bolt	3
11	SHCS-2125	SHCS - M6 x 1 x 12mm - SS	1
12	FW-2010	Flat Washer - M10 x 22 x 2mm	2
13	SW-2005	Spring Washer - M10 - S/S	2

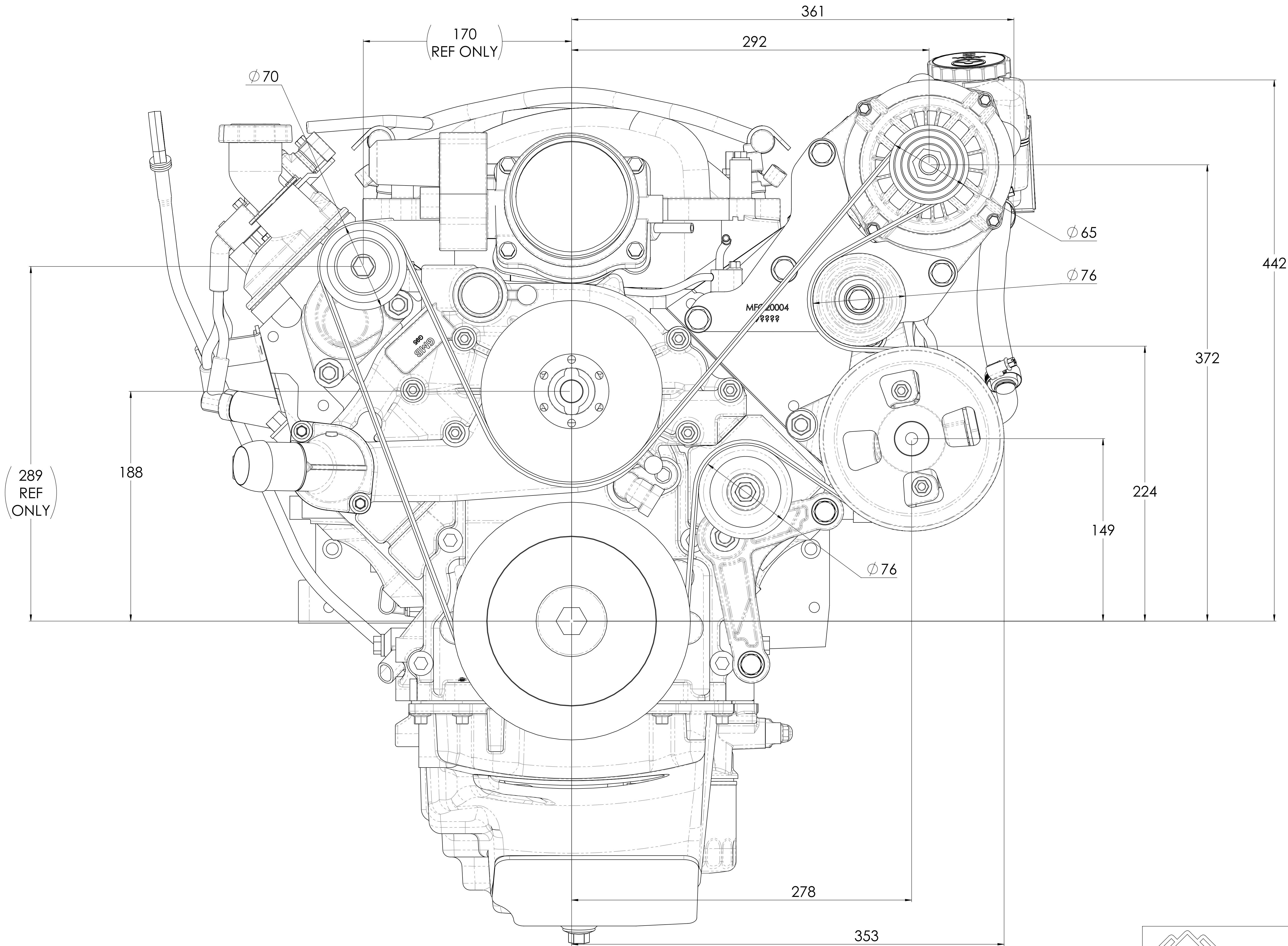
INSTRUCTION DRAWINGS

MFK50100-SHT-1
MFK50100-SHT-2
1: MFG20004
A: LS - ACCMOD - 01
B: LS - ACCMOD - 02
C/2: LS - ACCMOD - 04
D: LS - INFO - 02
E: LS - INFO - 03



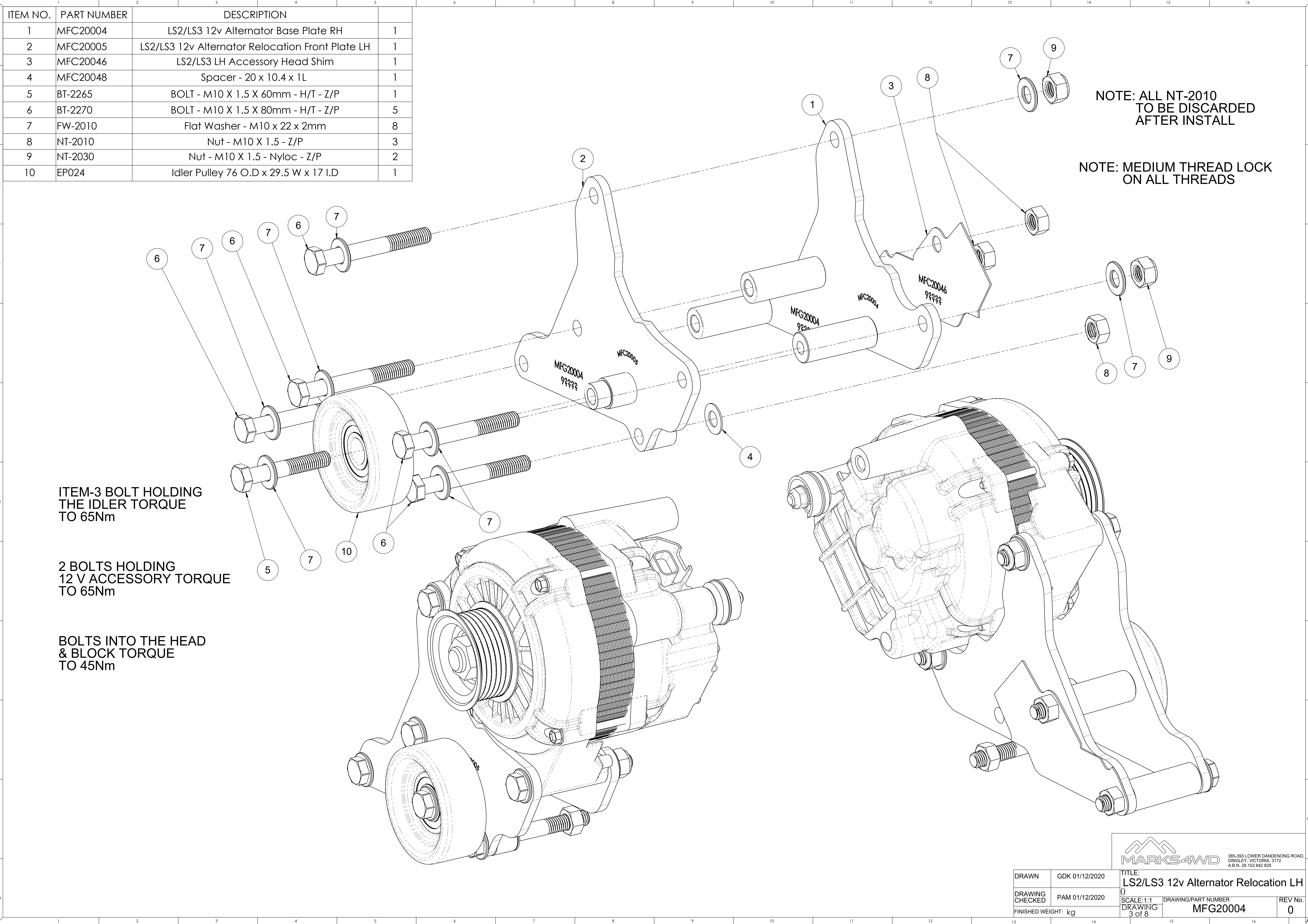
THE SUCCESSFUL ASSEMBLY OF THE KIT
REQUIRES THE MODIFICATION PROCEDURES
IN THE INSTRUCTION DRAWINGS LISTED ON
THIS SHEET TO BE CAREFULLY FOLLOWED

DRAWN	GDK 01/12/2020	TITLE:	Accessory Kit - LH 12v Alt
DRAWING CHECKED	PAM 01/12/2020	SCALE: 1:2.5	DRAWING/PART NUMBER
FINISHED WEIGHT: kg		DRAWING 1 of 8	MFK50100
		REV No.	0



DRAWN	GDK 01/12/2020	TITLE: () Accessory Kit - LH 12v Alt	
DRAWING CHECKED	PAM 01/12/2020	SCALE: 1:1.5 DRAWING 2 of 8	DRAWING/PART NUMBER MFK50100
FINISHED WEIGHT: kg			REV No. 0

ITEM NO.	PART NUMBER	DESCRIPTION	
1	MFC20004	LS2/LS3 12v Alternator Base Plate RH	1
2	MFC20005	LS2/LS3 12v Alternator Relocation Front Plate LH	1
3	MFC20046	LS2/LS3 LH Accessory Head Shim	1
4	MFC20048	Spacer - 20 x 10.4 x 1L	1
5	BT-2265	BOLT - M10 X 1.5 X 60mm - H/T - Z/P	1
6	BT-2270	BOLT - M10 X 1.5 X 80mm - H/T - Z/P	5
7	FW-2010	Flat Washer - M10 x 22 x 2mm	8
8	NT-2010	Nut - M10 X 1.5 - Z/P	3
9	NT-2030	Nut - M10 X 1.5 - Nyloc - Z/P	2
10	EP024	Idler Pulley 76 O.D x 29.5 W x 17 I.D	1



NOTE: ALL NT-2010
TO BE DISCARDED
AFTER INSTALL

NOTE: MEDIUM THREAD LOCK
ON ALL THREADS

ITEM-3 BOLT HOLDING
THE IDLER TORQUE
TO 65Nm

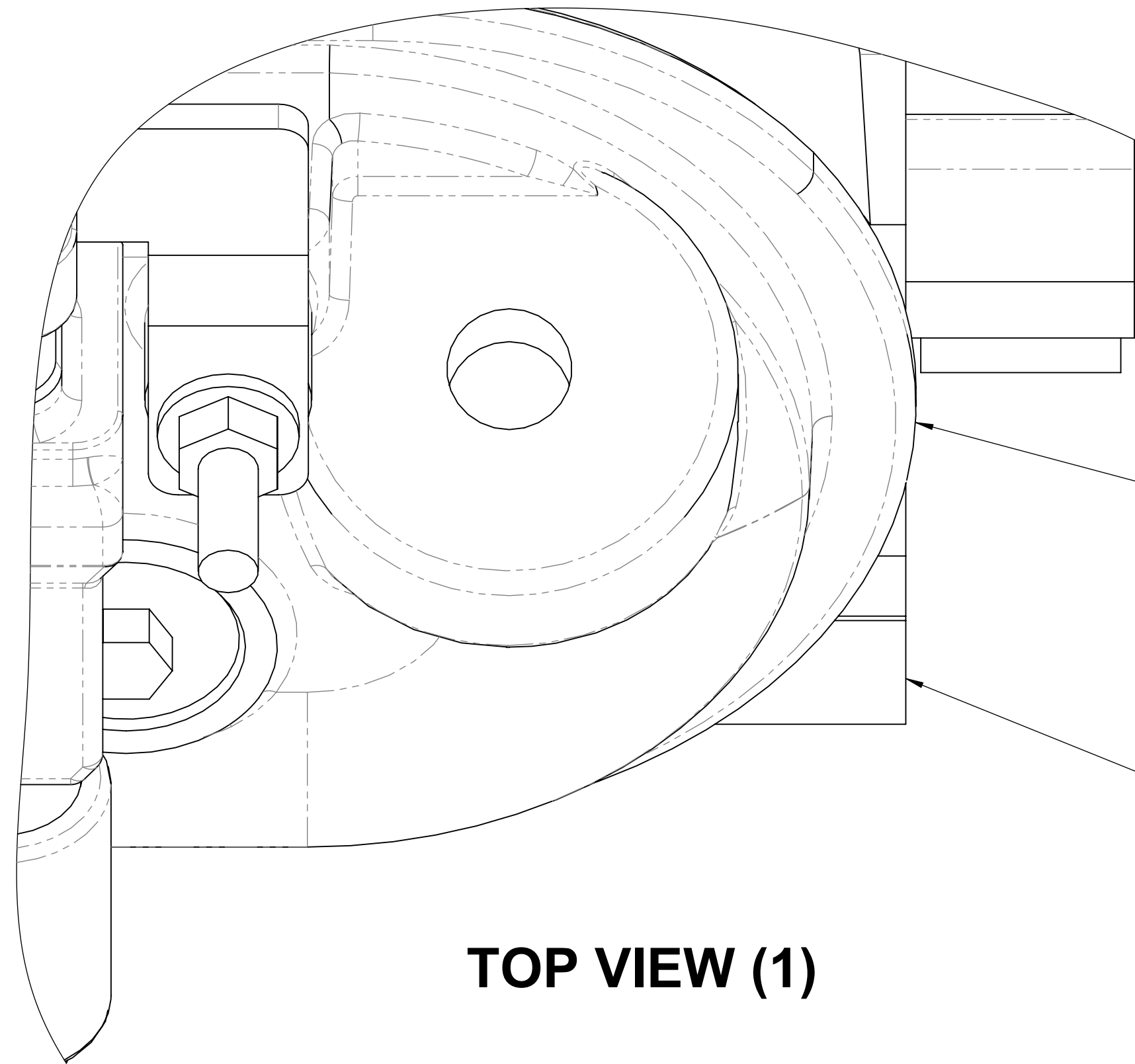
2 BOLTS HOLDING
12 V ACCESSORY TORQUE
TO 65Nm

BOLTS INTO THE HEAD
& BLOCK TORQUE
TO 45Nm

DRAWN	GDK 01/12/2020	TITLE:	LS2/LS3 12v Alternator Relocation LH
DRAWING CHECKED	PAM 01/12/2020	SCALE:1:1	DRAWING/PART NUMBER
FINISHED WEIGHT: kg		DRAWING 3 of 8	REV No. 0
			MFG20004

LS - SERIES ROCKER COVER LIP MODIFICATION

STANDARD ROCKER COVER



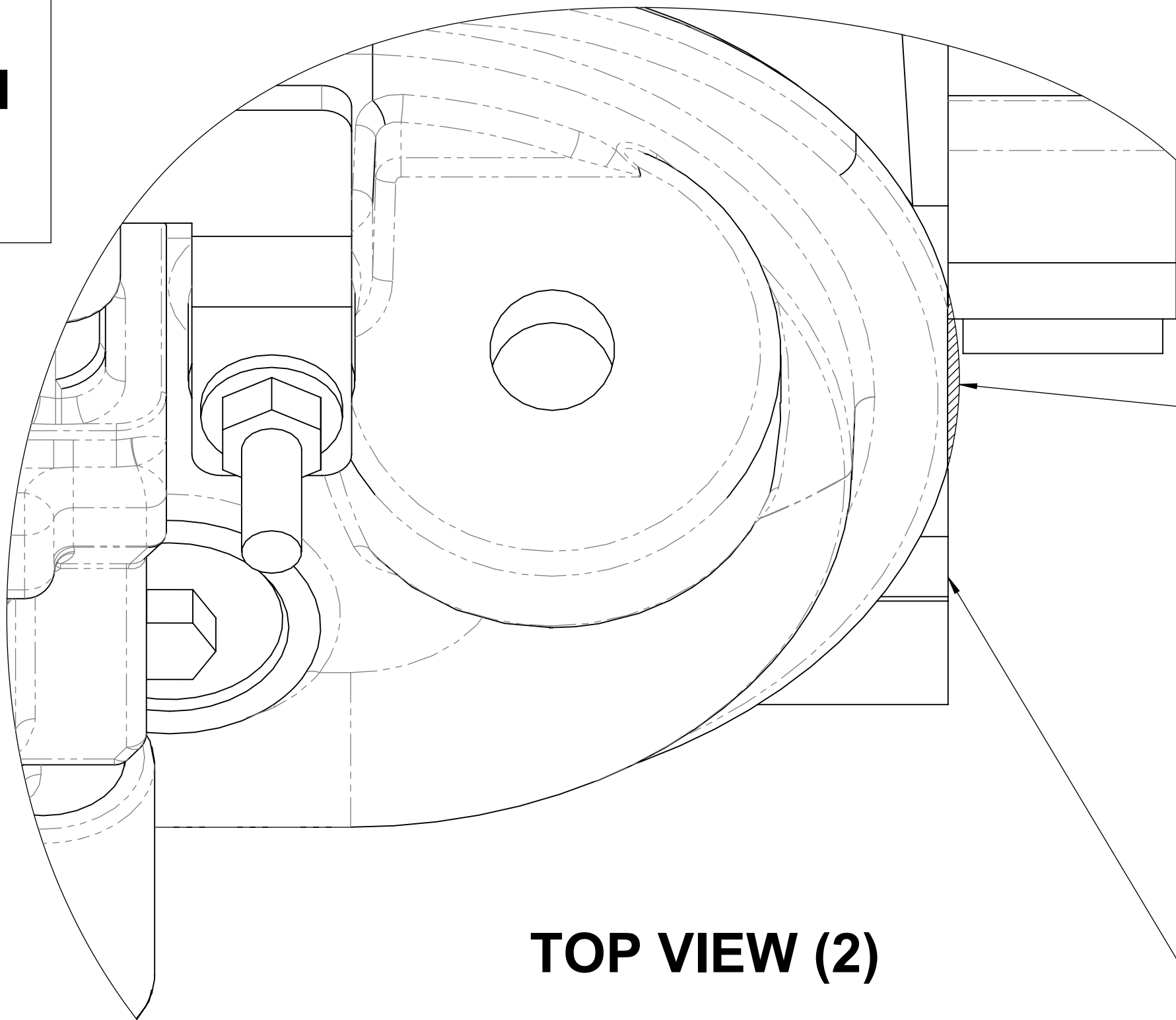
TOP VIEW (1)

THE LIP MODIFICATION SHOWS THE DRIVER SIDE CYLINDER HEAD FITTED WITH THE PASSENGER SIDE ROCKER COVER

PASSENGER SIDE ROCKER COVER LIP SITS ABOVE THE CYLINDER HEAD

DRIVER SIDE CYLINDER HEAD FACE SHOWN

MODIFIED ROCKER COVER



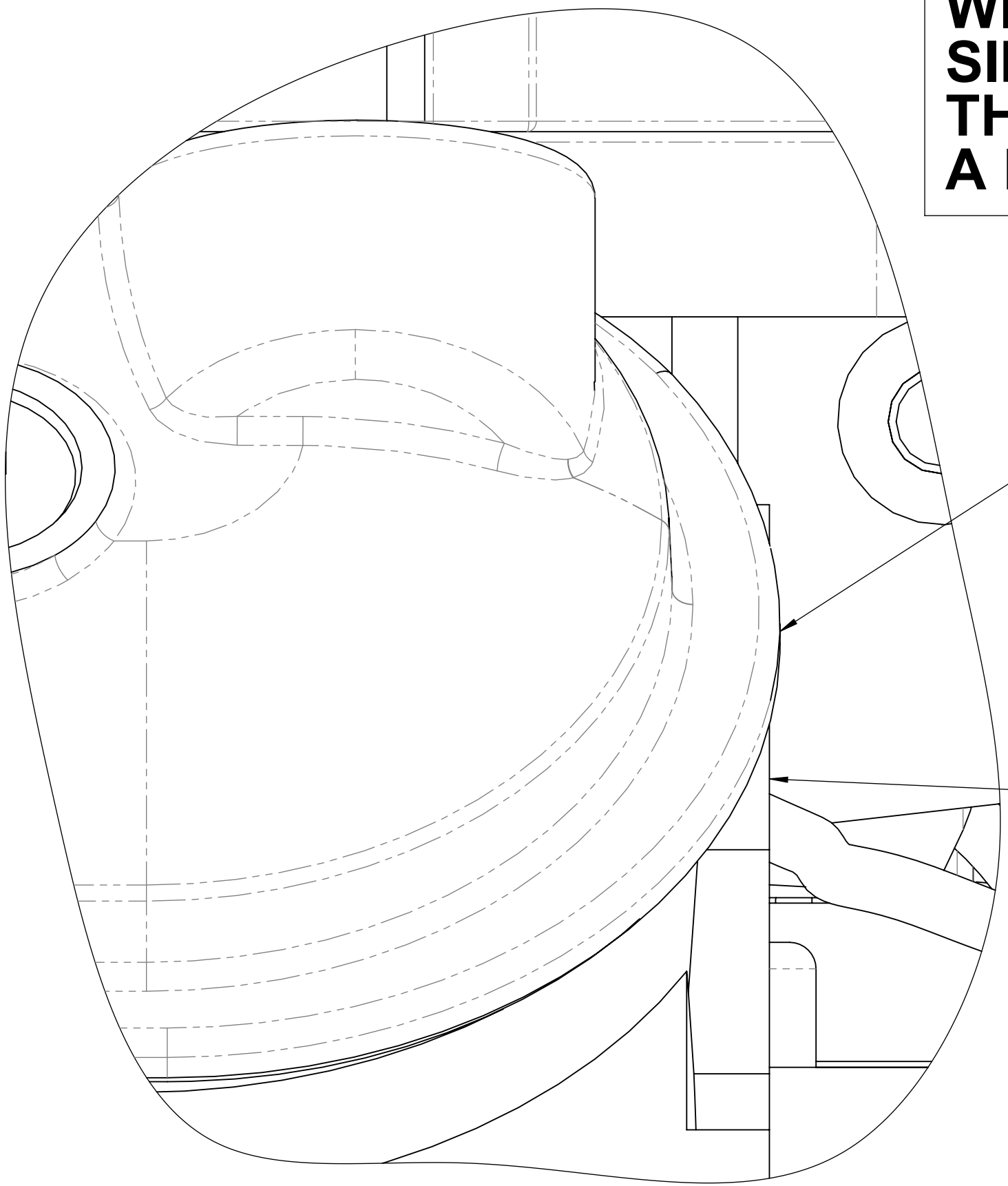
TOP VIEW (2)

DRIVER SIDE ROCKER COVER LIP REMOVE THE HATCHED AREA AS SHOWN

SHAVED ROCKER LIP SHOULD LOOK LIKE THE SIDE VIEW (2) BELOW

DRIVER SIDE CYLINDER HEAD FACE SHOWN

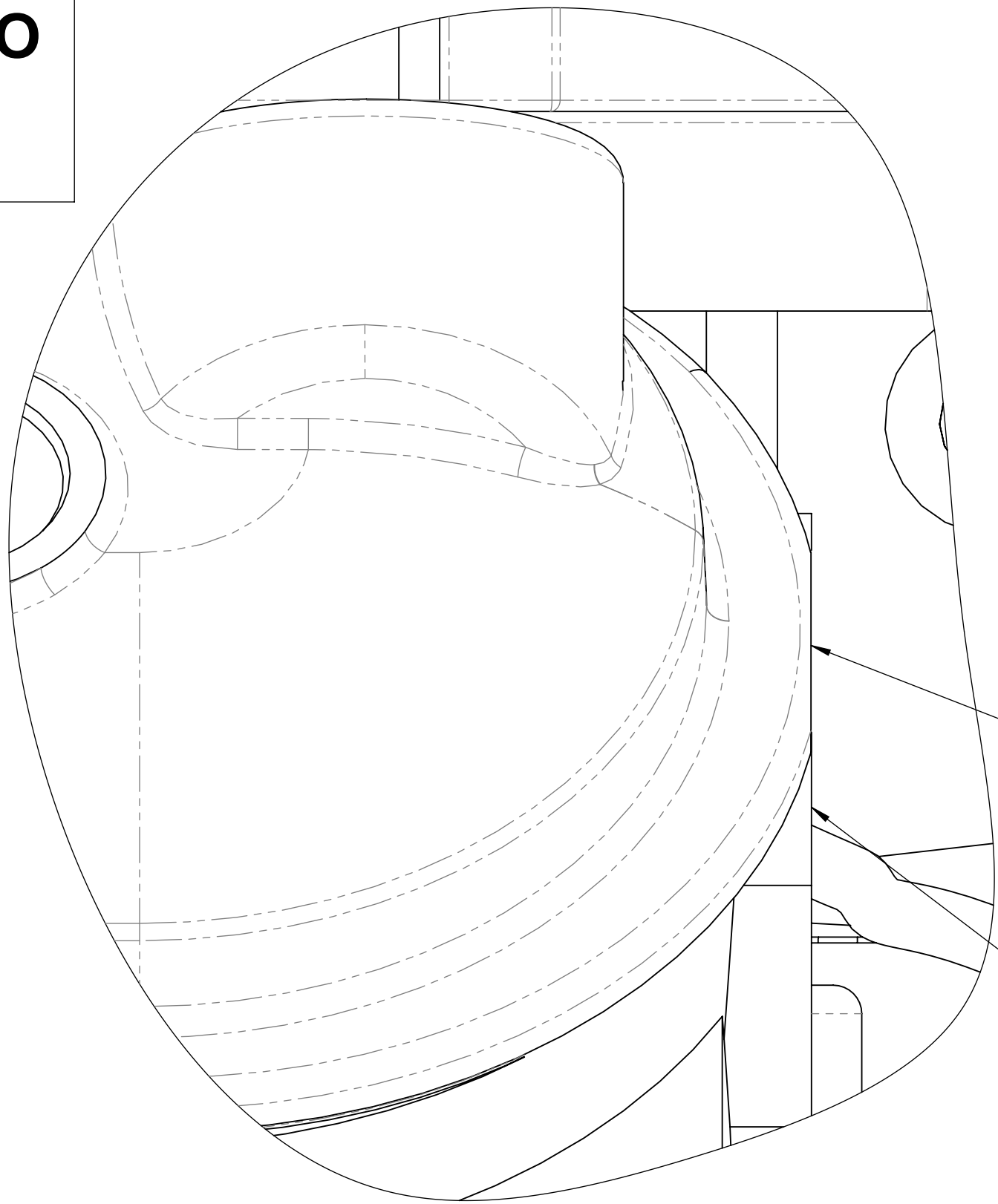
THE ROCKER COVER LIP MODIFICATION WILL ALSO BE REQUIRED FOR THE DRIVER SIDE ROCKER COVER WHEN IT IS FITTED TO THE PASSENGER SIDE CYLINDER HEAD IF A LH ACCESSORY KIT IS TO BE FITTED



SIDE VIEW (1)

PASSENGER SIDE ROCKER COVER LIP SITS ABOVE THE CYLINDER HEAD

DRIVER SIDE CYLINDER HEAD FACE SHOWN



SIDE VIEW (2)

THE LIP OVER HANG MUST BE SHAVED BACK TO THE CYLINDER HEAD FACE

CAUTION: DO NOT SHAVE PAST THE CYLINDER HEAD & ENCROACH INTO THE O RING GROOVE

PASSENGER SIDE ROCKER COVER LIP SHAVED

DRIVER SIDE CYLINDER HEAD FACE SHOWN

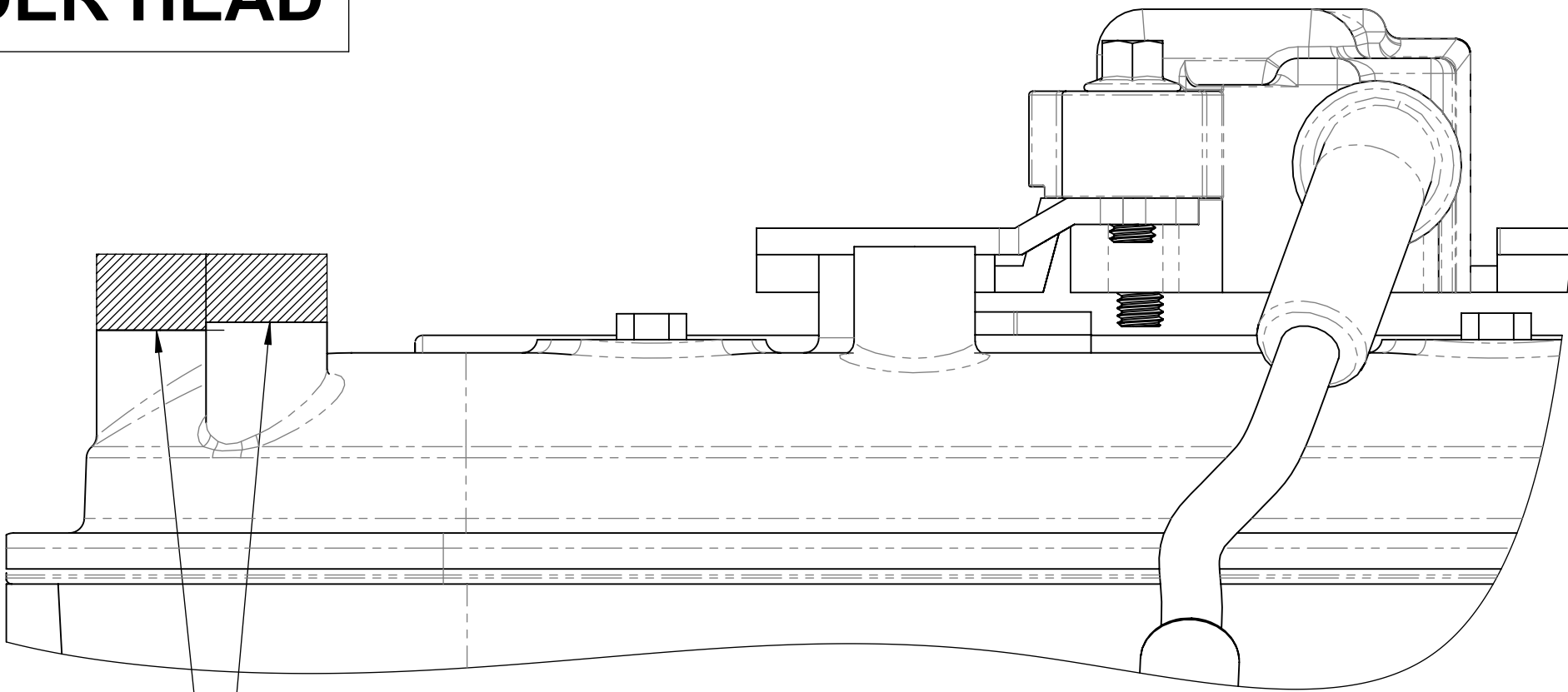
DRAWN	GDK 01/12/2020	TITLE: LS - Series Rocker Cover Lip Modification		
DRAWING CHECKED	PAM 01/12/2020	SCALE:2:1 DRAWING 1 of 1	DRAWING/PART NUMBER LS - ACCMOD - 01	REV No. 0
FINISHED WEIGHT: kg				

LS - SERIES ROCKER COVER COIL BOSS MODIFICATION
(ROCKER COVERS IN FACTORY POSITION)

STANDARD ROCKER COVER

THE BOSS MODIFICATION
SHOWS THE PASSENGER SIDE
ROCKER COVER ON THE
PASSENGER SIDE CYLINDER HEAD

MODIFIED ROCKER COVER
(OPTION-1)



SIDE VIEW (2)

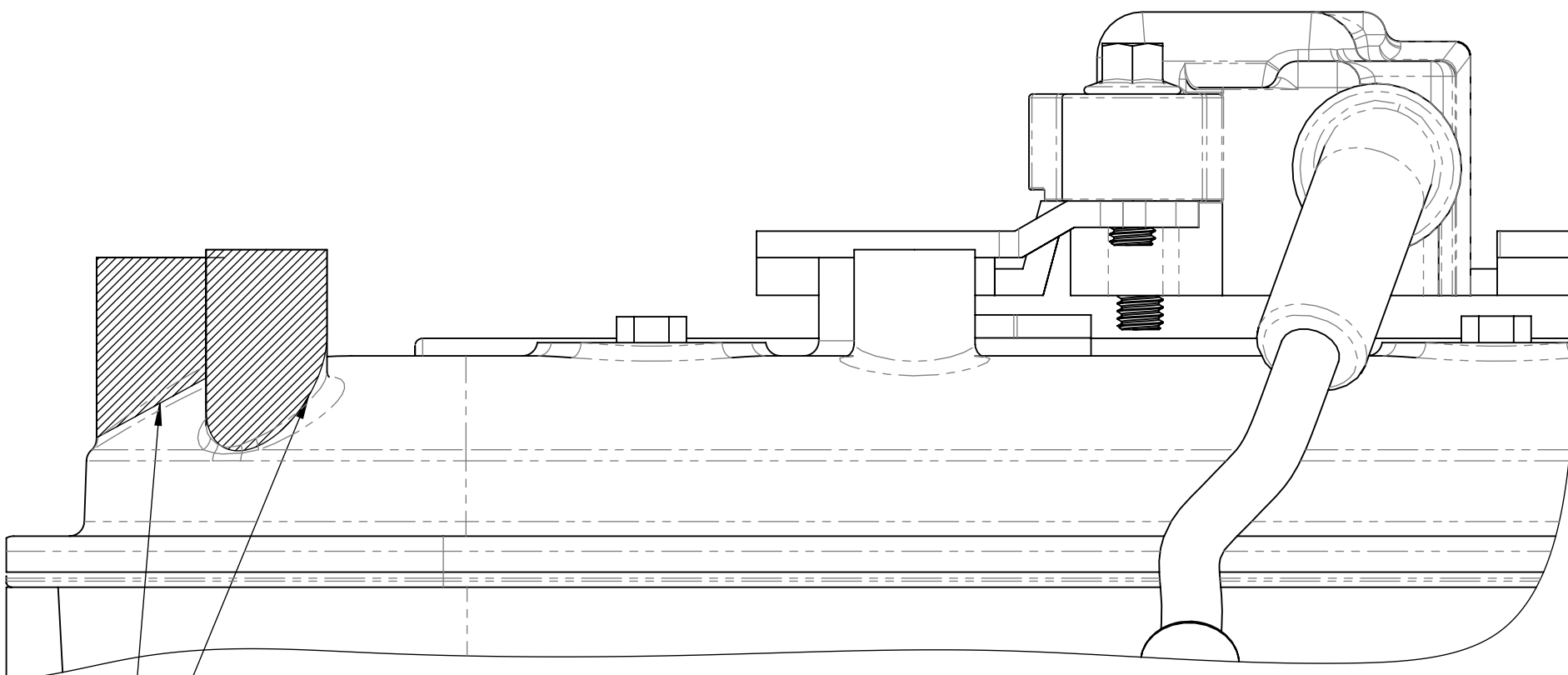
PASSENGER SIDE ROCKER COVER

REMOVE THE HATCHED AREA
AS SHOWN ABOVE UNTIL THE
CLEARANCE FOR THE ACCESSORY
KIT IS ACHIEVED

THE STANDARD HEIGHT OF THE
2 MOUNTING BOSSES NEED TO BE
MODIFIED

DECIDE FROM EITHER
(OPTION-1) OR (OPTION-2)

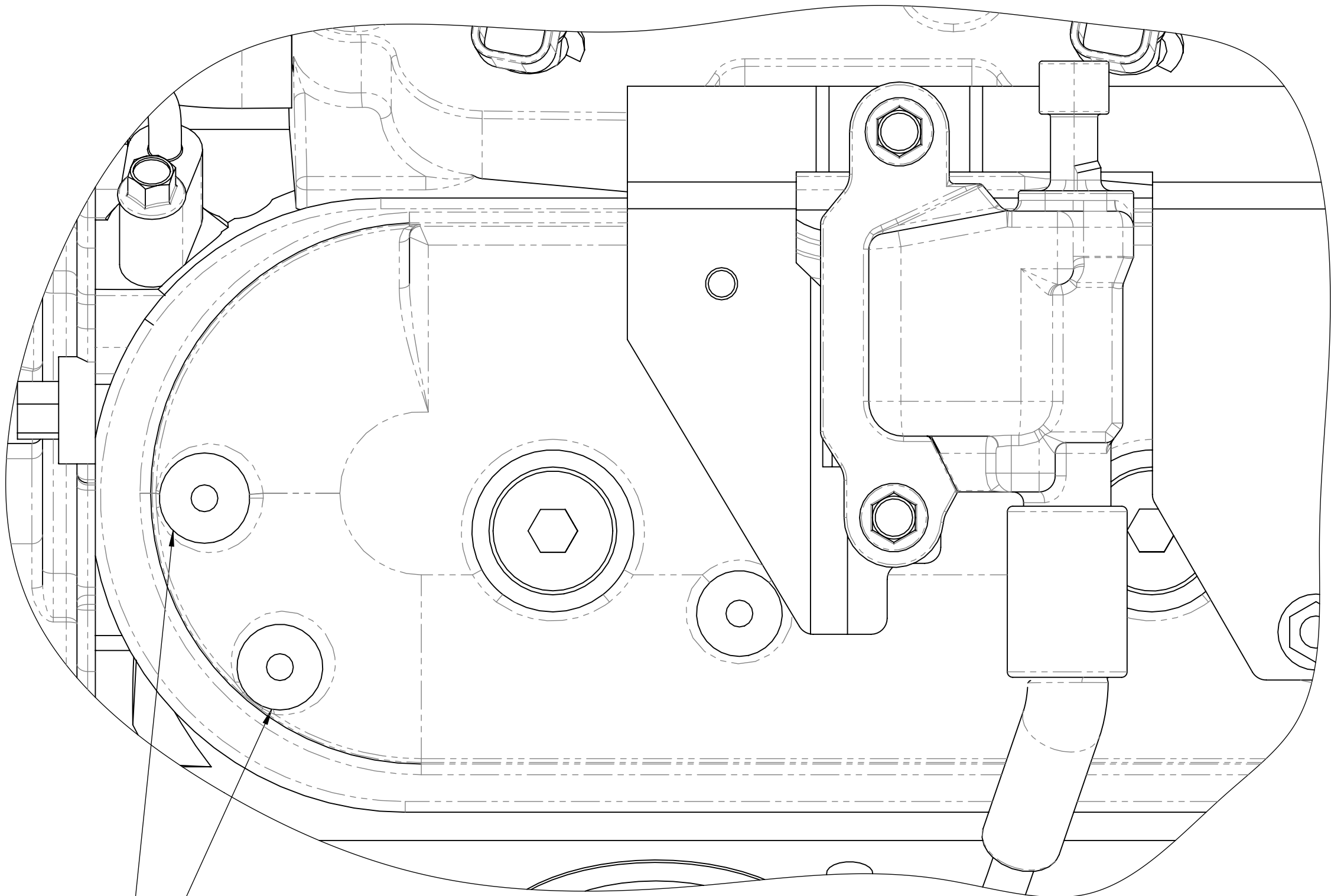
MODIFIED ROCKER COVER
(OPTION-2)



SIDE VIEW (3)

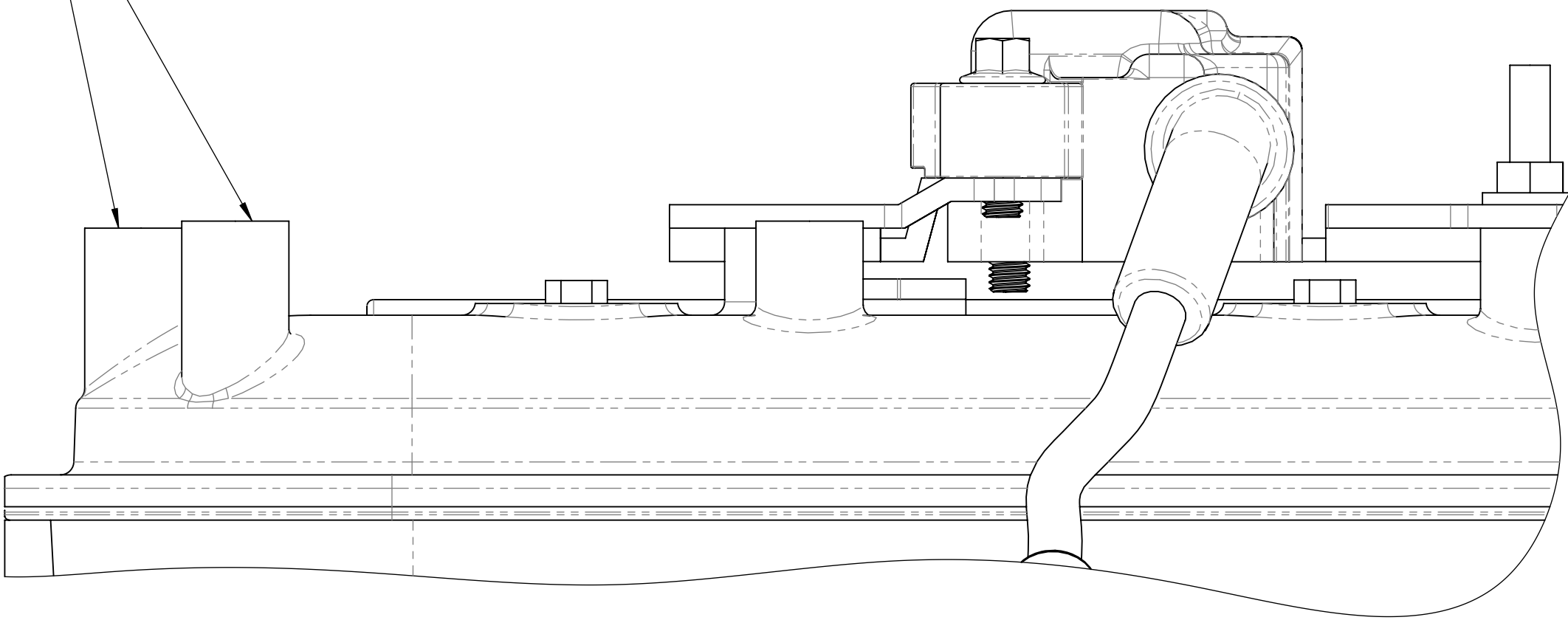
PASSENGER SIDE ROCKER COVER

REMOVE THE HATCHED AREA
AS SHOWN ABOVE & SMOOTH OFF
TO MATCH SHAPE OF COVER



TOP VIEW (1)

MOUNTING
BOSSES TO
BE MODIFIED

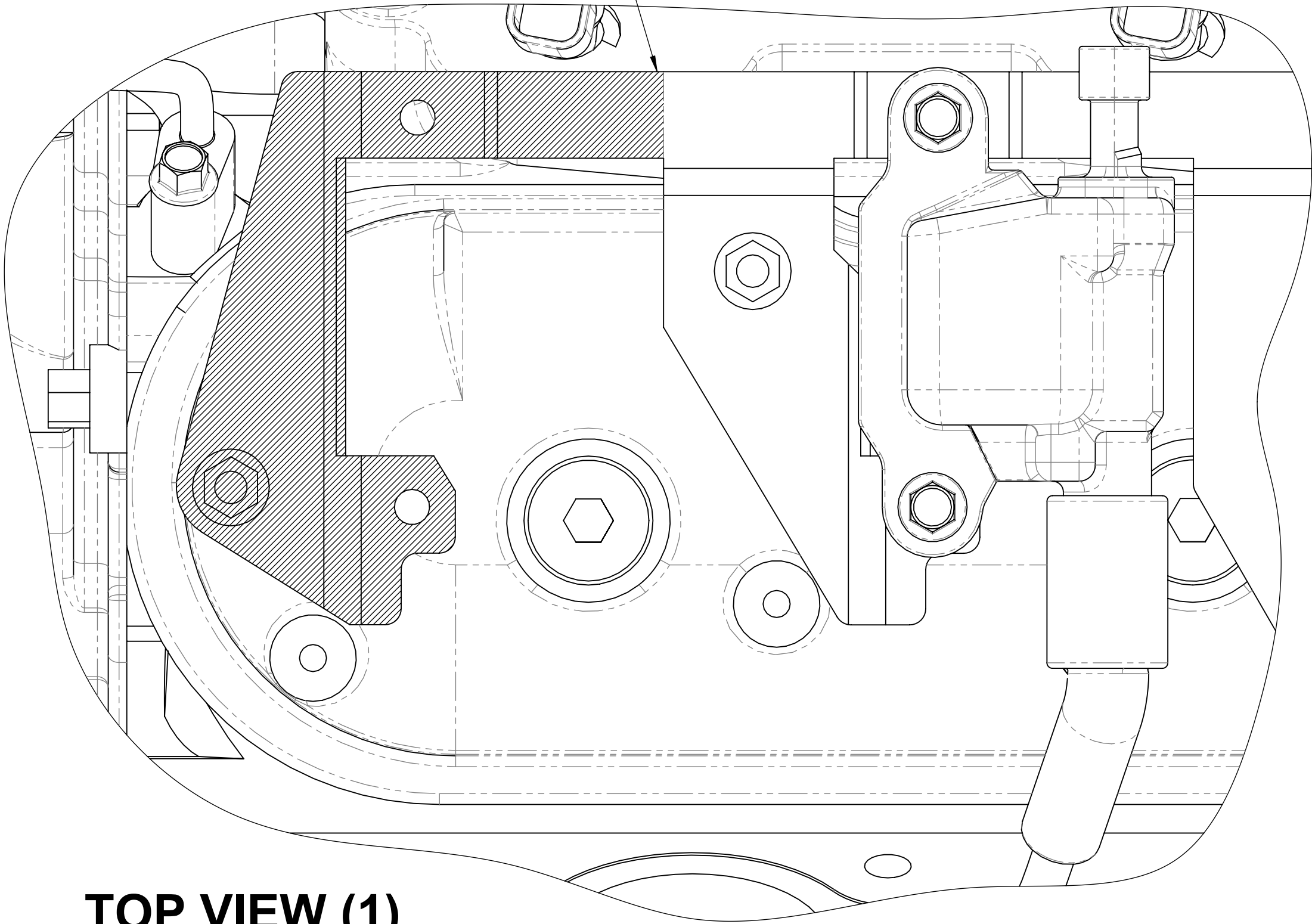


SIDE VIEW (1)

LS - SERIES PASSENGER SIDE COIL BRACKET MODIFICATION
FOR COIL RELOCATION BRACKET MFC20020
(ROCKER COVERS IN FACTORY POSITION)

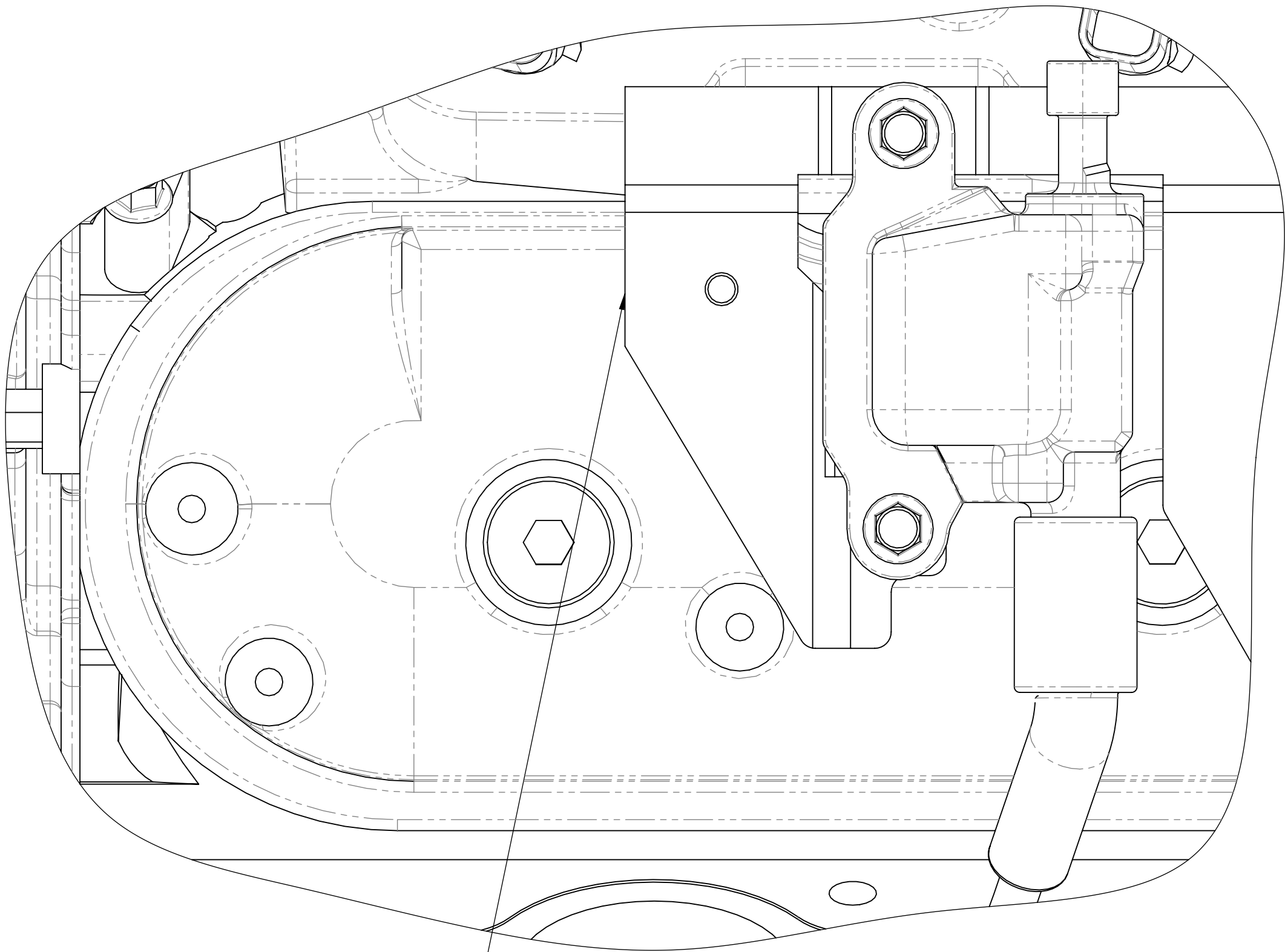
REMOVE THE HATCHED AREA
AS SHOWN TO ALLOW
FITMENT OF THE COIL
RELOCATION BRACKET

STANDARD PASSENGER SIDE
COIL BRACKET



TOP VIEW (1)

MODIFIED PASSENGER SIDE
COIL BRACKET



TOP VIEW (2)

REUSE FACTORY BOLTS

MFC20020

REASSEMBLE THE LS COIL TO
MFC20020 IN THE ORIENTATION
SHOWN THEN FASTEN MFC20020
TO THE MODIFIED COIL BRACKET
& MOUNTING BOSS ON THE ROCKER
COVER AS SHOWN IN THE
EXPLODED VIEW

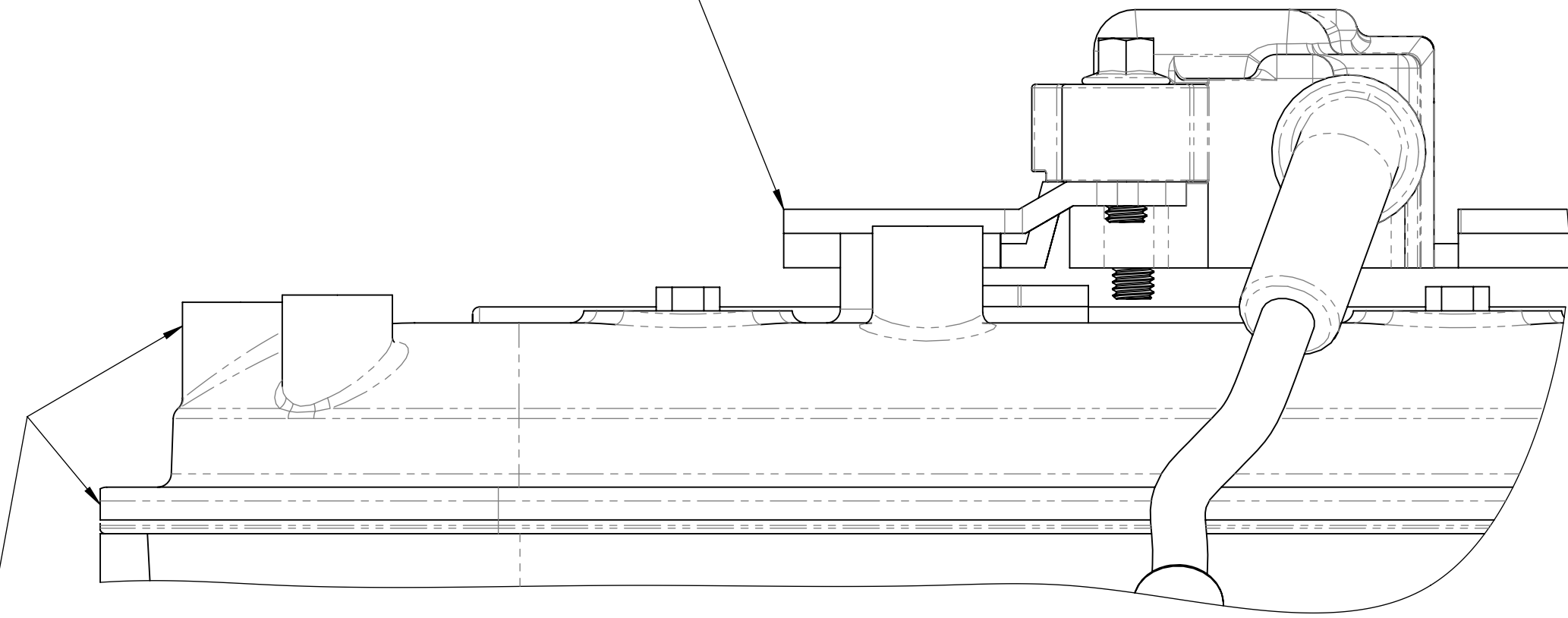
ROCKER COVER
MODIFICATION
IS REQUIRED BEFORE
COIL RELOCATION

REFER TO DRAWING:-

(LS - ACCMOD - 01)
LS - SERIES ROCKER COVER
LIP MODIFICATION

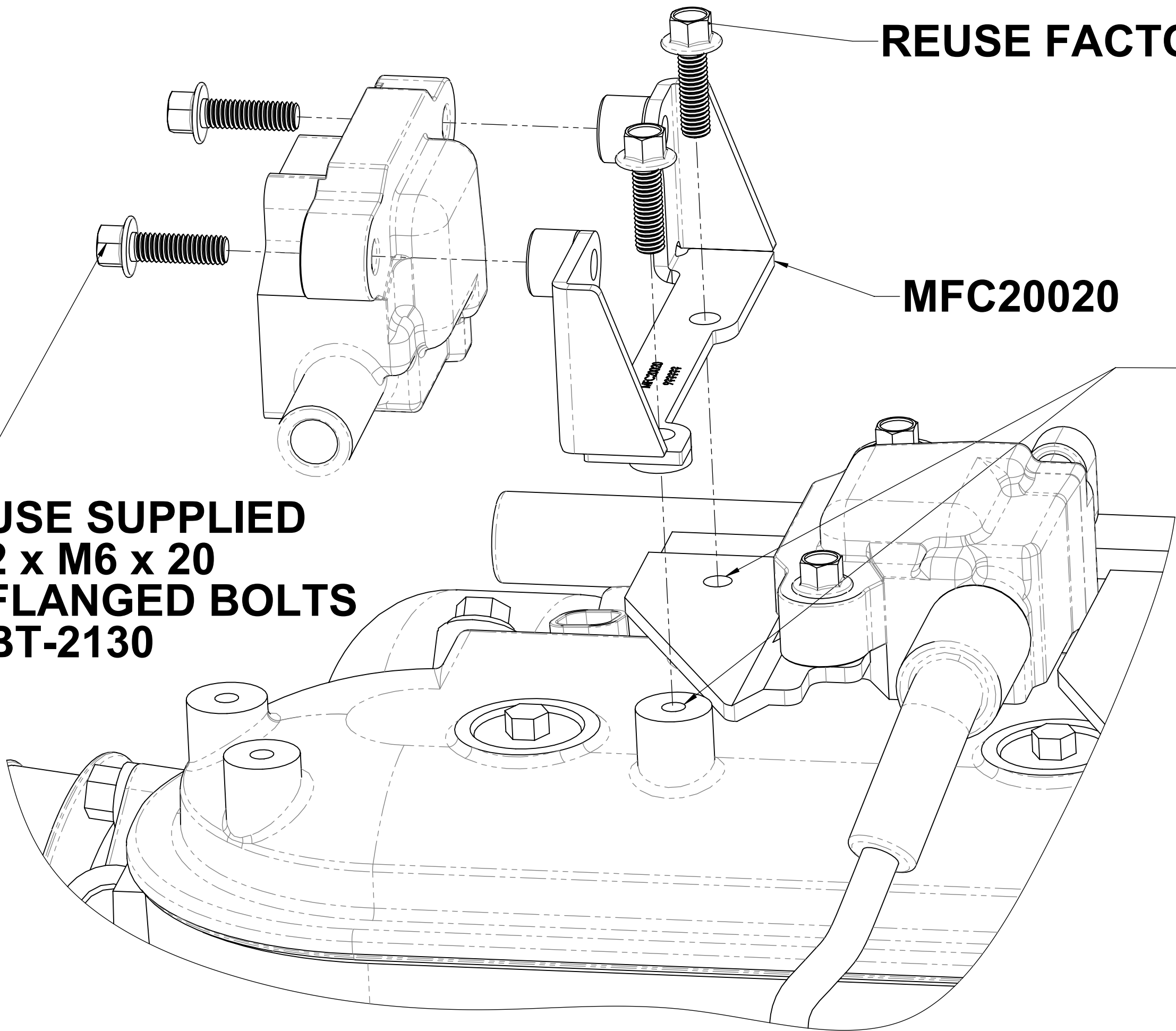
(LS - ACCMOD - 02)
LS - SERIES ROCKER COVER
COIL BOSS MODIFICATION

MODIFIED PASSENGER SIDE
COIL BRACKET AS SHOWN IN
TOP VIEW (2) & SIDE VIEW (2)



SIDE VIEW (2)

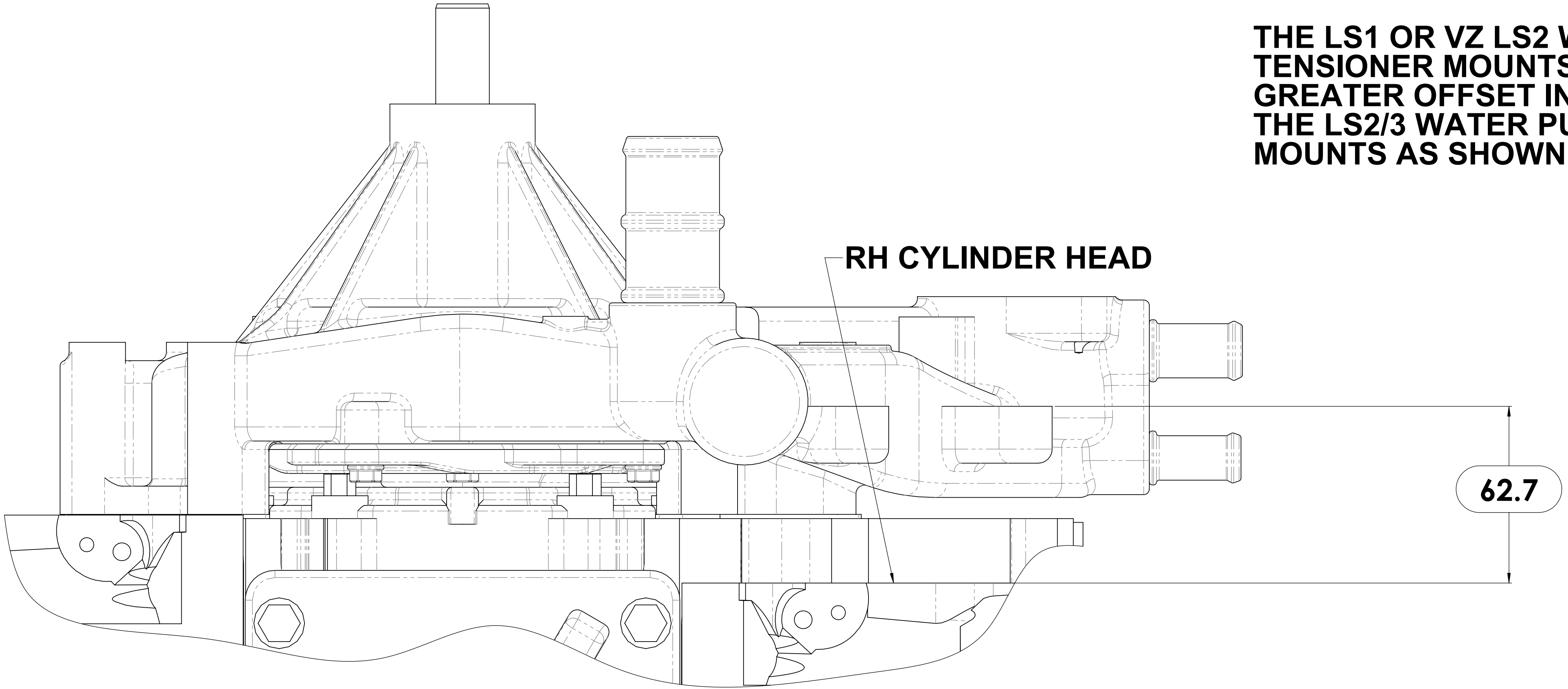
USE SUPPLIED
2 x M6 x 20
FLANGED BOLTS
BT-2130



EXPLODE VIEW

LS WATER PUMP TENSIONER MOUNT OFFSETS

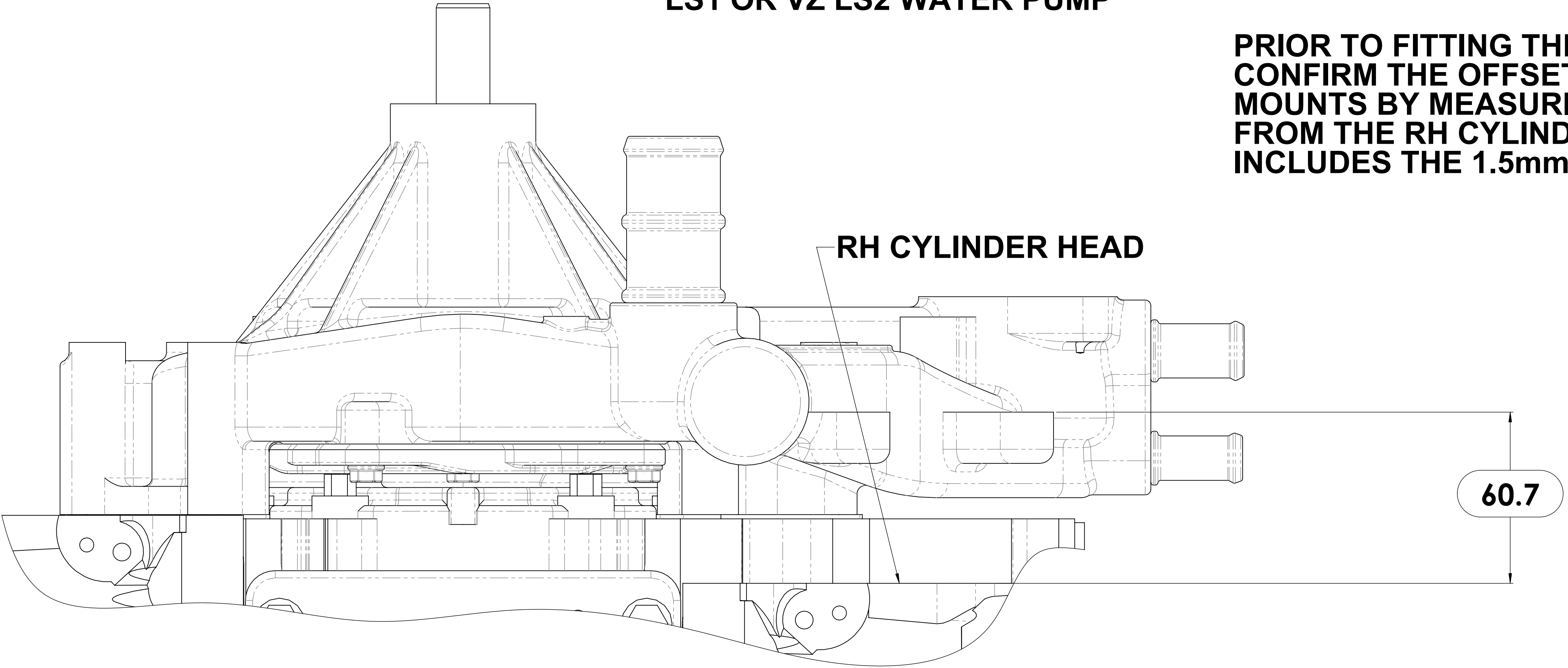
THE LS1 OR VZ LS2 WATER PUMP TENSIONER MOUNTS WILL HAVE A 2mm GREATER OFFSET IN RELATION TO THE LS2/3 WATER PUMP TENSIONERS MOUNTS AS SHOWN



62.7 LS1 TENSIONER MOUNT OFFSET (mm)

LS1 OR VZ LS2 WATER PUMP

PRIOR TO FITTING THE ACCESSORY KIT CONFIRM THE OFFSET OF THE TENSIONER MOUNTS BY MEASURING THE OFFSET FROM THE RH CYLINDER HEAD THE OFFSET INCLUDES THE 1.5mm WATER PUMP GASKET



60.7 LS2/3 TENSIONER MOUNT OFFSET (mm)

LS2/3 WATER PUMP

DRAWN		GDK 01/12/2020	TITLE:		LS Water Pump Tensioner Mount	
DRAWING CHECKED		PAM 01/12/2020	() OFFSETS			
FINISHED WEIGHT: kg			SCALE:1:1	DRAWING/PART NUMBER	REV No.	
			DRAWING 1 of 1	LS - INFO - 02	0	

LS2/3 TENSIONER ASSEMBLY
OEM POSITION

1:- SET THE TENSIONER MOUNT OFFSET

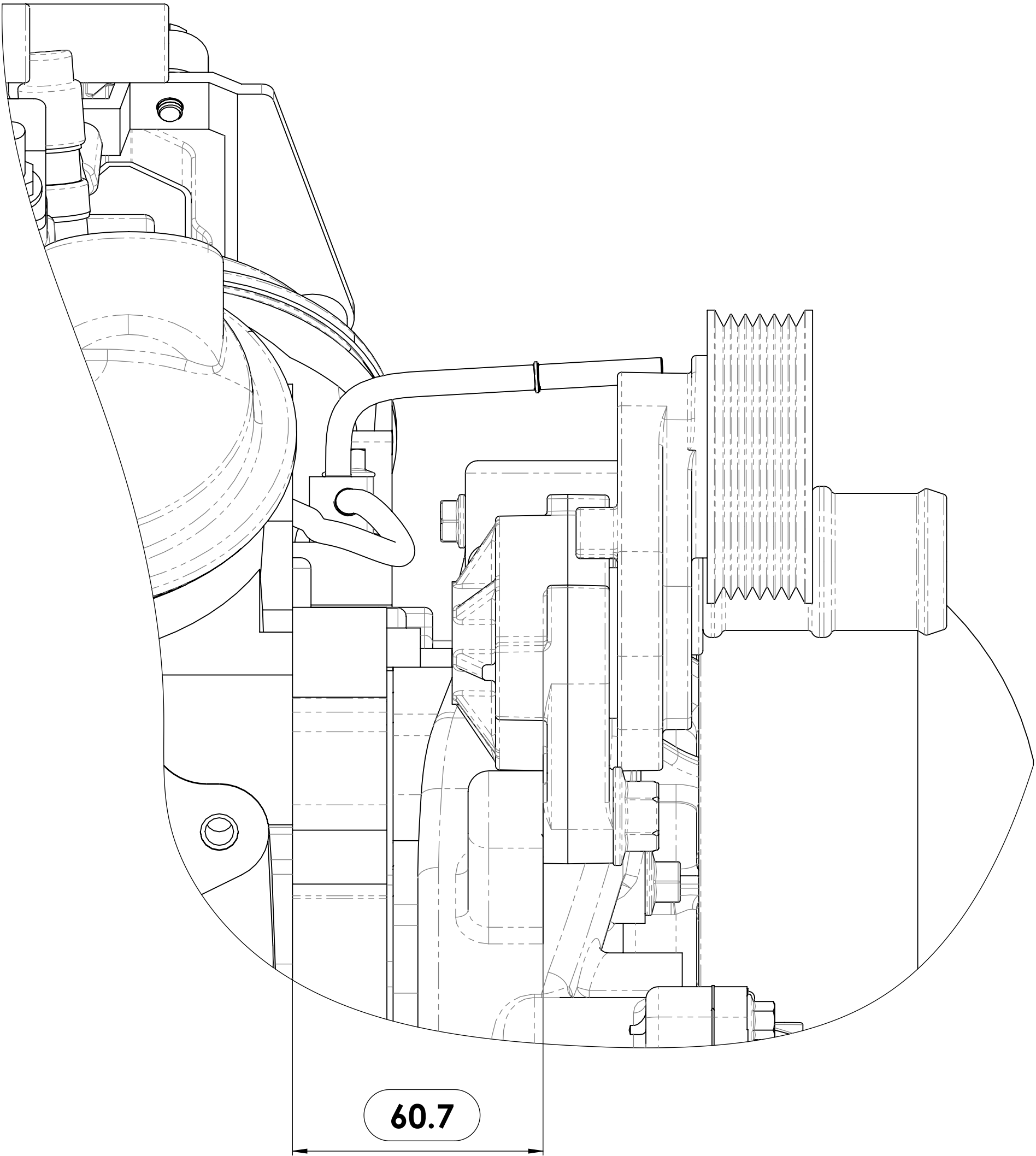
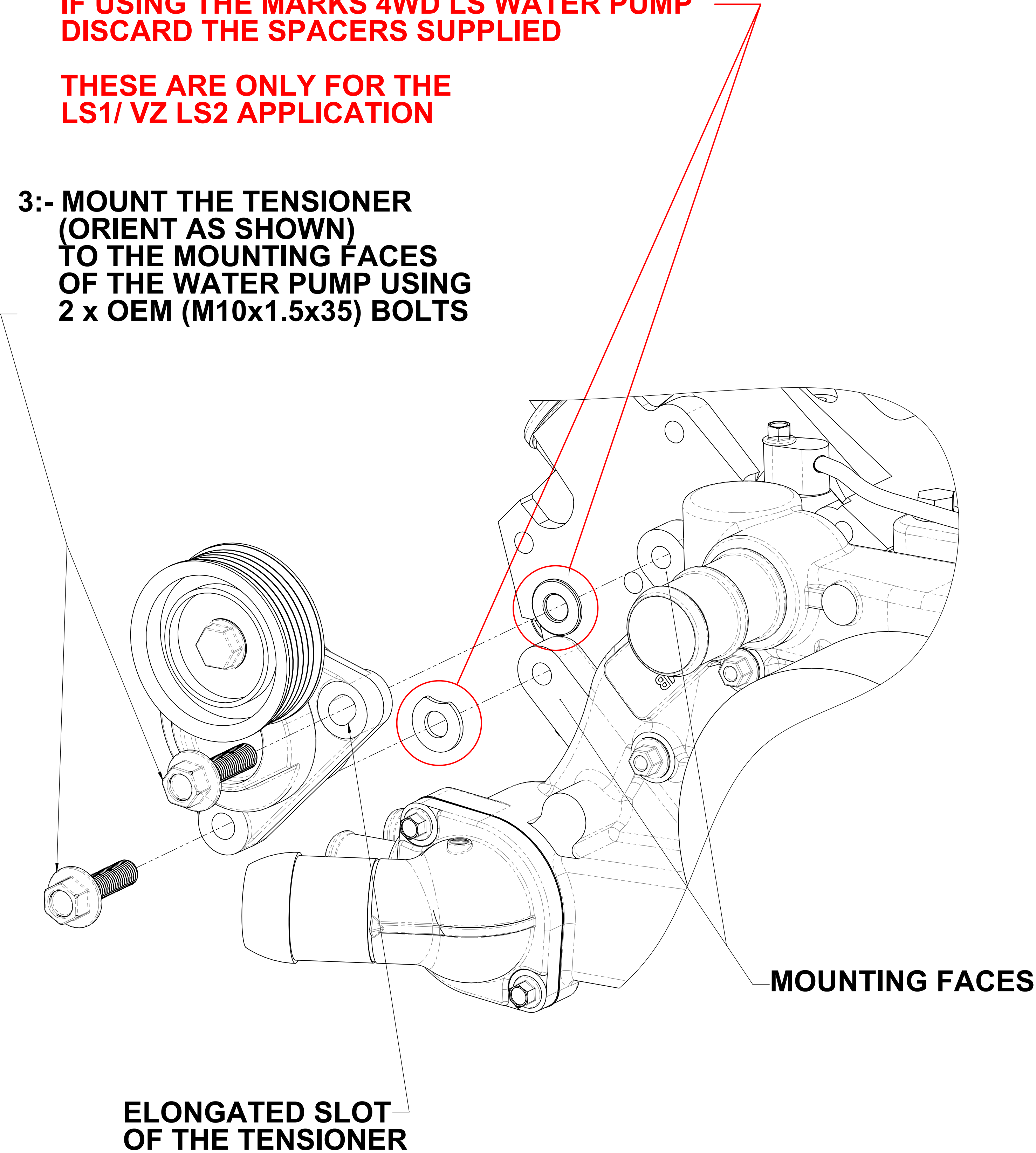
2:- IF USING OEM LS2/LS3 WATER PUMP GO TO
STEP 3:-

IF USING THE MARKS 4WD LS WATER PUMP
DISCARD THE SPACERS SUPPLIED

THESE ARE ONLY FOR THE
LS1/ VZ LS2 APPLICATION

3:- MOUNT THE TENSIONER
(ORIENT AS SHOWN)
TO THE MOUNTING FACES
OF THE WATER PUMP USING
2 x OEM (M10x1.5x35) BOLTS

THE PROCEDURES OUTLINED WILL APPLY
TO THE OEM LS2/LS3 WATER PUMP & THE
MARKS 4WD LS WATER PUMP
FOLLOW STEPS 1,2,3 IN THAT ORDER



1:-TENSIONER OFFSET
IS IN (mm)
(LS - INFO - 02)



DRAWN	GDK 01/12/2020	TITLE: LS2/3 Tensioner Assembly OEM Position		
DRAWING CHECKED	PAM 01/12/2020	SCALE:1:1 DRAWING 1 of 1	DRAWING/PART NUMBER LS - INFO - 03	REV No. 0
FINISHED WEIGHT: kg				