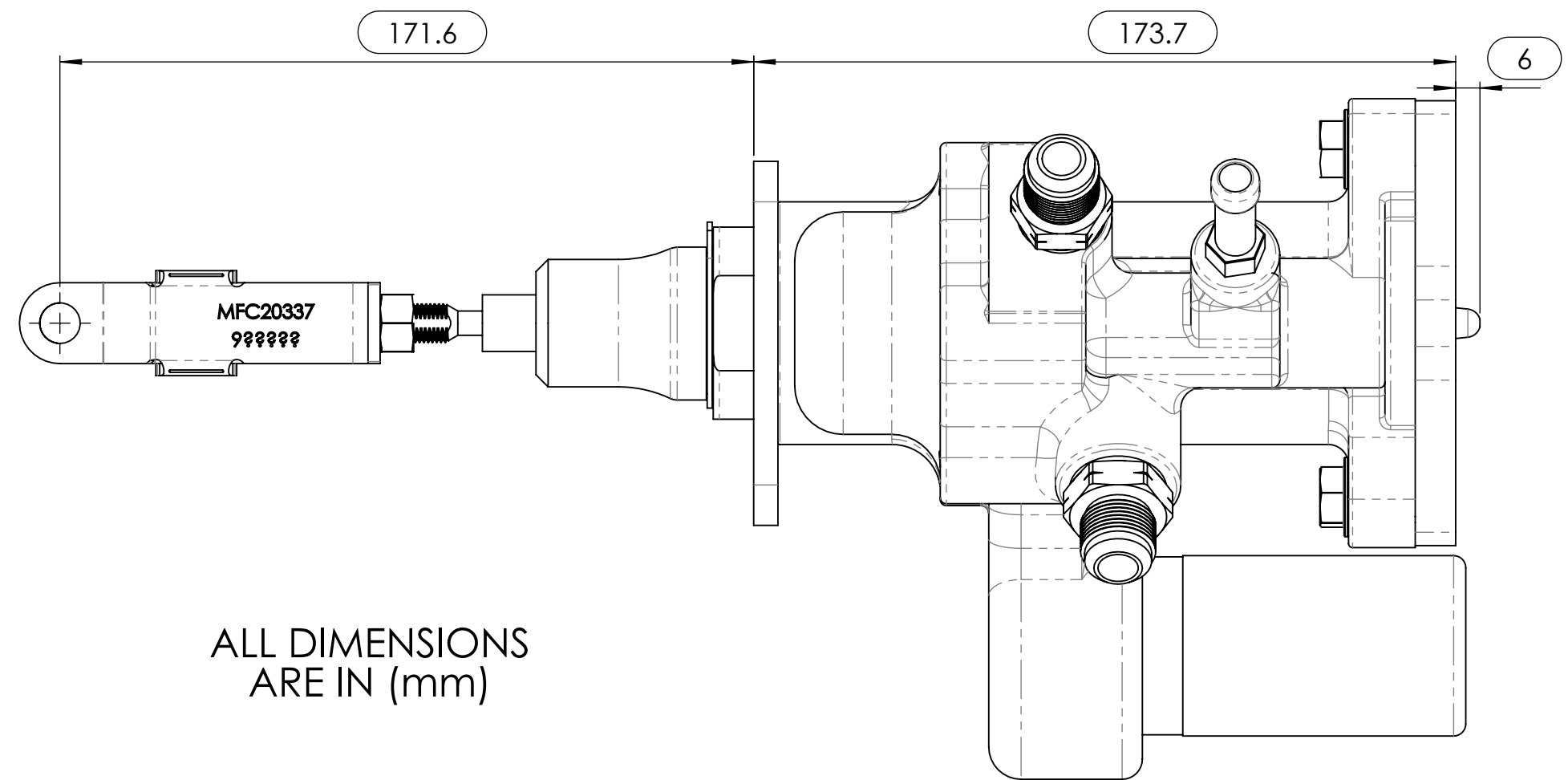
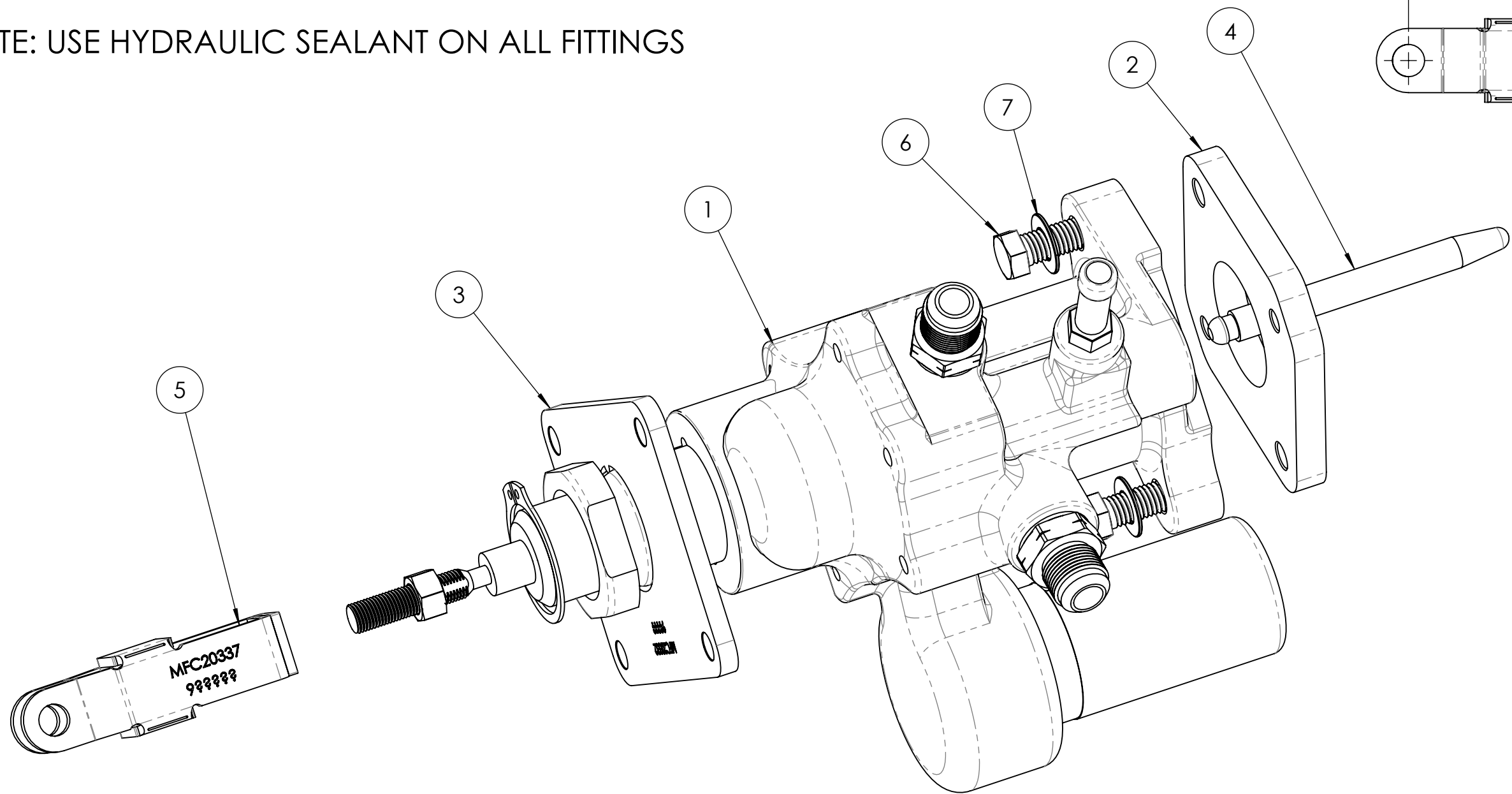
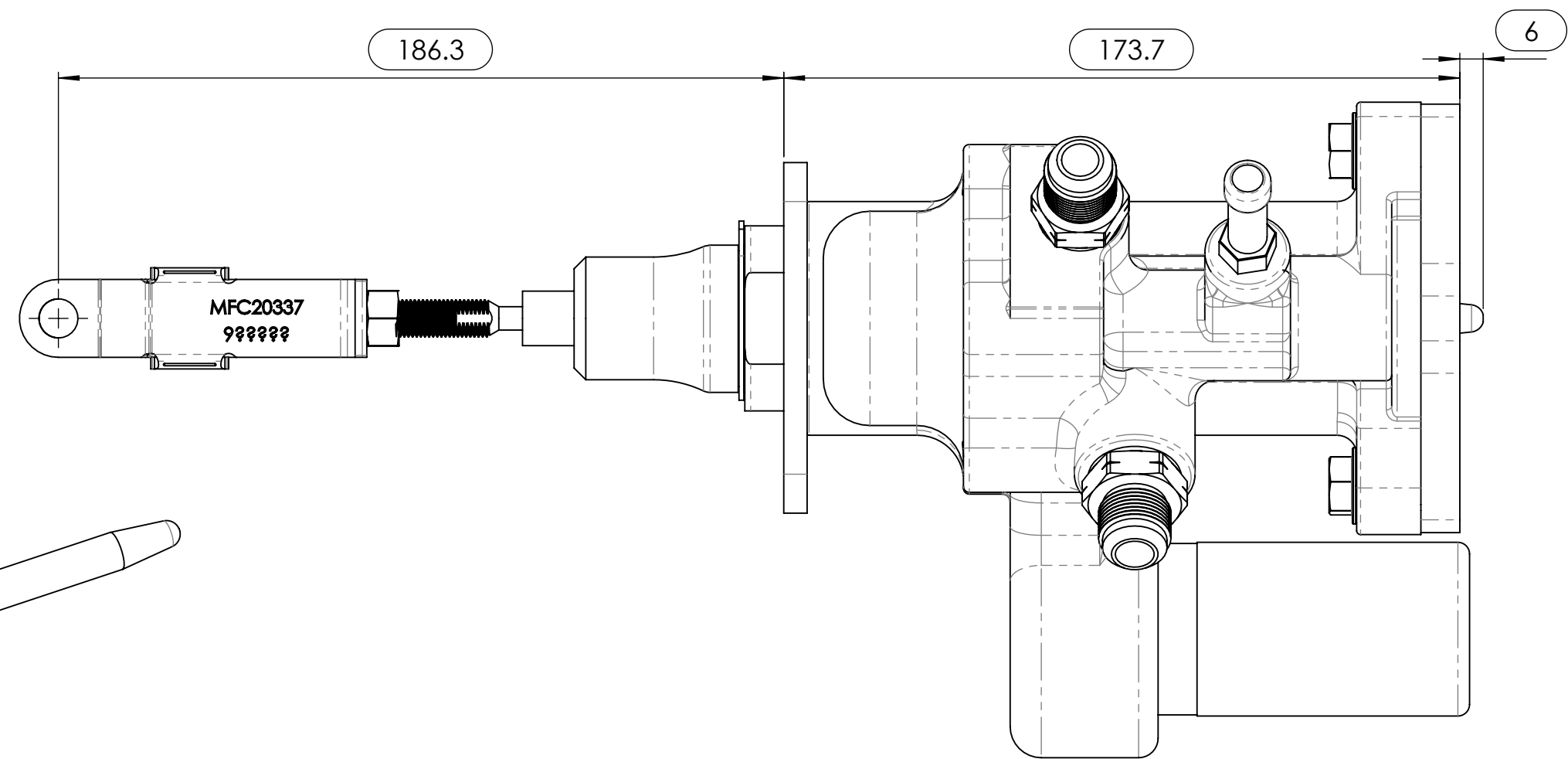


NOTE: RETURN LINE SHOULD BE "T" IN AS CLOSE TO POWER STEERING RESERVOIR AS POSSIBLE

NOTE: USE HYDRAULIC SEALANT ON ALL FITTINGS



ALL DIMENSIONS
ARE IN (mm)



ITEM NO.	PART NUMBER	DESCRIPTION	EXPLODED/QTY.
1	MFC20190-1	Hydraulic Brake Booster	1
2	MFC20331	Booster to Master Cly. Adaptor Toyota VDJ7#	1
3	MFC20332	Booster to Firewall Adaptor Toyota VDJ7#	1
4	MFC20333-1	Booster Pushrod to Master Cyl. Toyota VDJ7# (101mm)	1
5	MFC20337	Booster Stirrup to Toyota VDJ7# Brake Pedal	1
6	BT-2240	BOLT - M10 X 1.5 X 25mm - H/T - Z/P	2
7	FW-2005	Flat Washer - M10 x 21 x 1.1 - S/S	2



385-393 LOWER DANDENONG ROAD,
DINGLEY, VICTORIA, 3172
A.B.N. 28 153 842 829

DRAWN	GDK 15/09/2020	TITLE:	Hydraulic Brake Booster - 70 Series	
DRAWING CHECKED	PAM 15/09/2020		1VD/1HZ	
FINISHED WEIGHT: 9.48 kg		SCALE:1:1.5	DRAWING/PART NUMBER	REV No.
		DRAWING 1 of 1	MFG20330-1	0