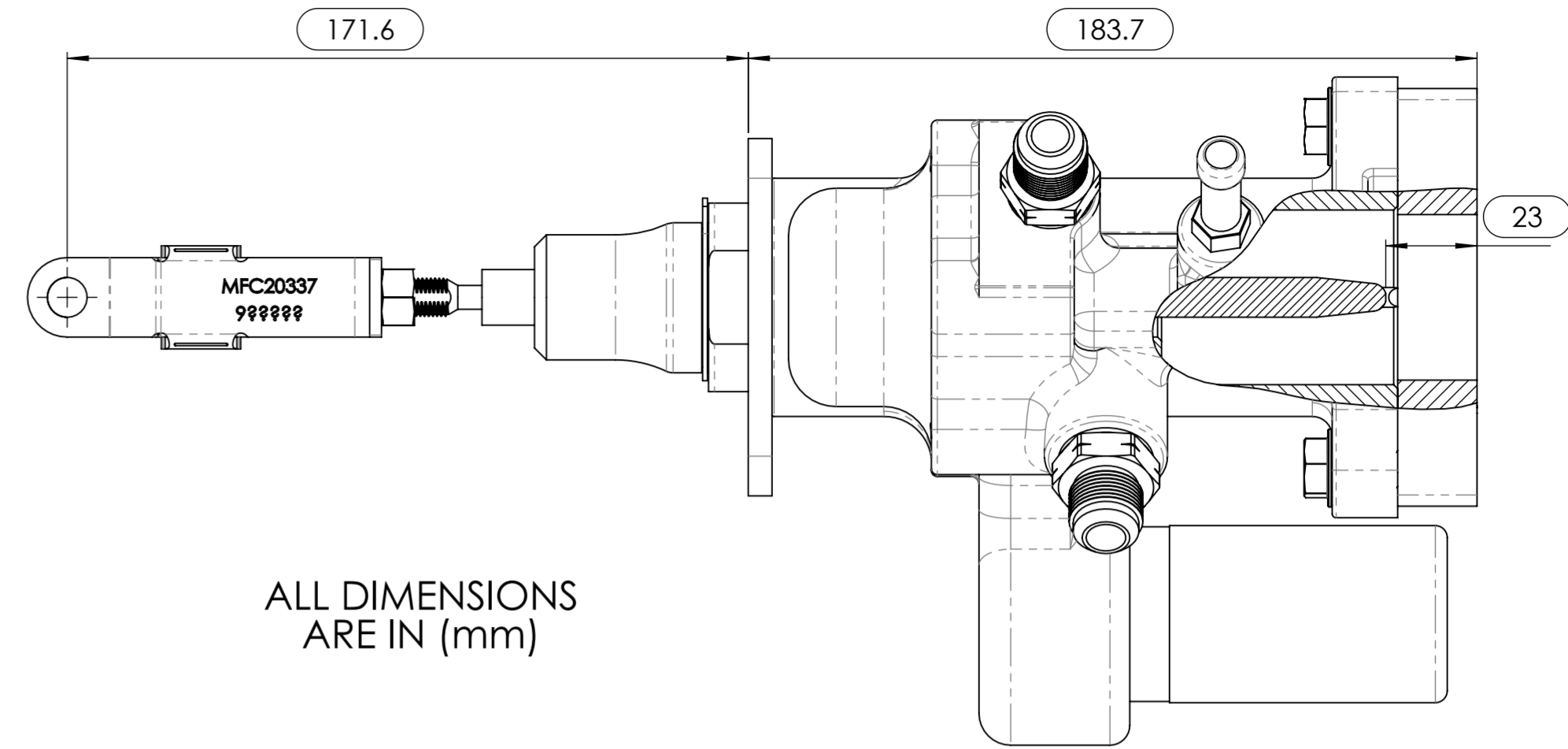
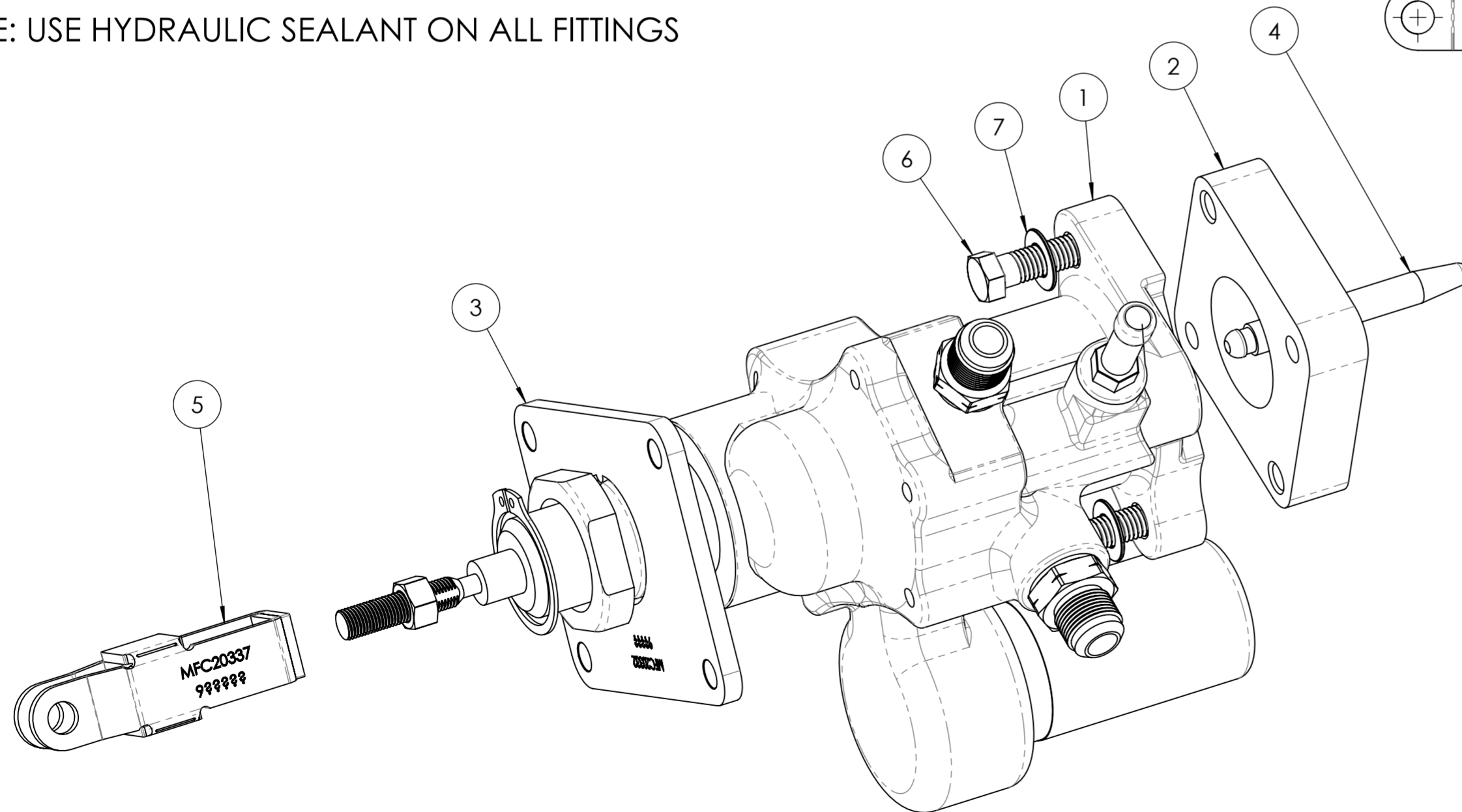


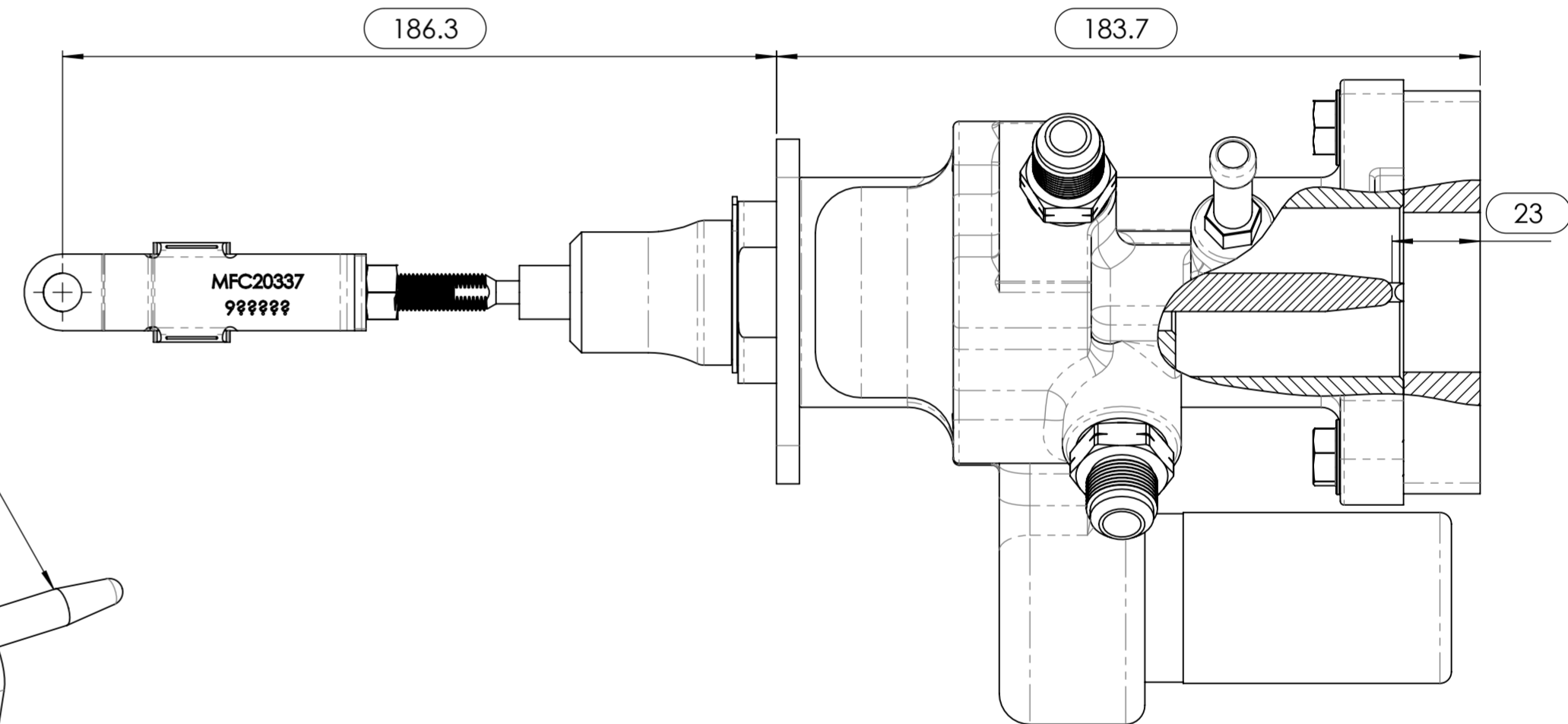
BOTTOM OF VEHICLE

NOTE: RETURN LINE SHOULD BE "T" IN AS CLOSE TO POWER STEERING RESERVOIR AS POSSIBLE

NOTE: USE HYDRAULIC SEALANT ON ALL FITTINGS



ALL DIMENSIONS ARE IN (mm)



ITEM NO.	PART NUMBER	DESCRIPTION	EXPLODE D/QTY.
1	MFC20190-1	Hydraulic Brake Booster	1
2	MFC20338	Booster to Master Cyl. Adaptor Toyota VDJ#-ABS	1
3	MFC20332	Booster to Firewall Adaptor Toyota VDJ7#	1
4	MFC20339-1	Booster Pushrod to Master Cyl. Toyota VDJ7# (82mm)	1
5	MFC20337	Booster Stirrup to Toyota VDJ7# Brake Pedal	1
6	BT-2250	BOLT - M10 X 1.5 X 35mm - H/T - Z/P	2
7	FW-2005	Flat Washer - M10 x 21 x 1.1 - S/S	2

MARKS4WD
 385-393 LOWER DANDENONG ROAD,
 DINGLEY, VICTORIA, 3172
 A.B.N. 28 153 842 829

DRAWN	GDK 15/09/2020	TITLE: Hydraulic Brake Booster - 70 Series ()	
DRAWING CHECKED	PAM 15/09/2020	SCALE: 1:1.5 DRAWING 1 of 1	DRAWING/PART NUMBER MFG20350-1
FINISHED WEIGHT: 9.77 kg		REV No.	0