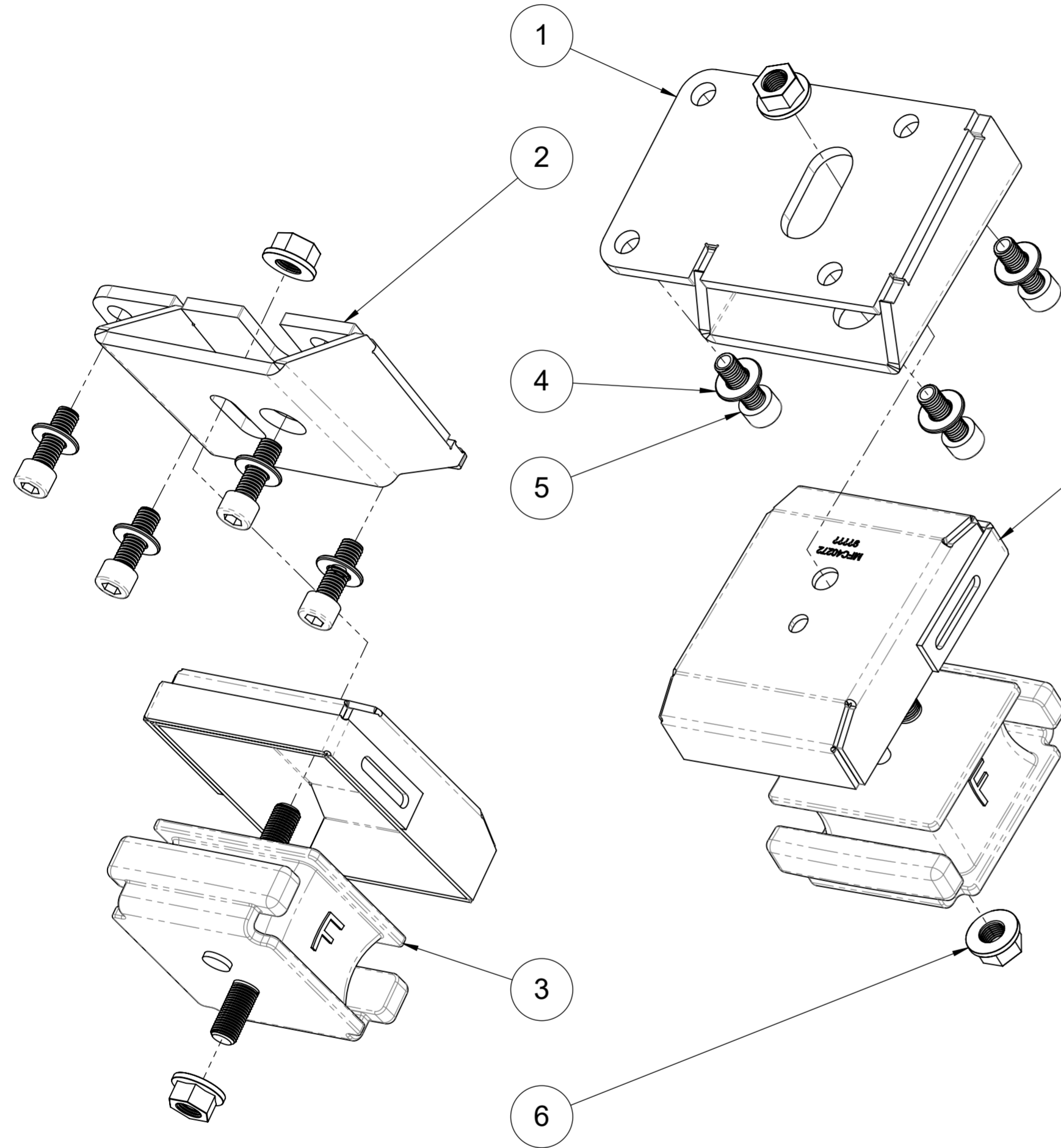


ITEM NO.	PART NUMBER	DESCRIPTION	QTY.
1	MFC1765L	Engine Mount LH LS to L/C	1
2	MFC1765R	Engine Mount RH LS to L/C	1
3	A5388	Engine Mount	2
4	FW-2010	Flat Washer - M10 x 22 x 2mm	8
5	SHCS-2045	SHCS - M10 x 1.5 x 30mm - Z/P	8
6	208M12125	Nut Flange M12 X 1.25	4

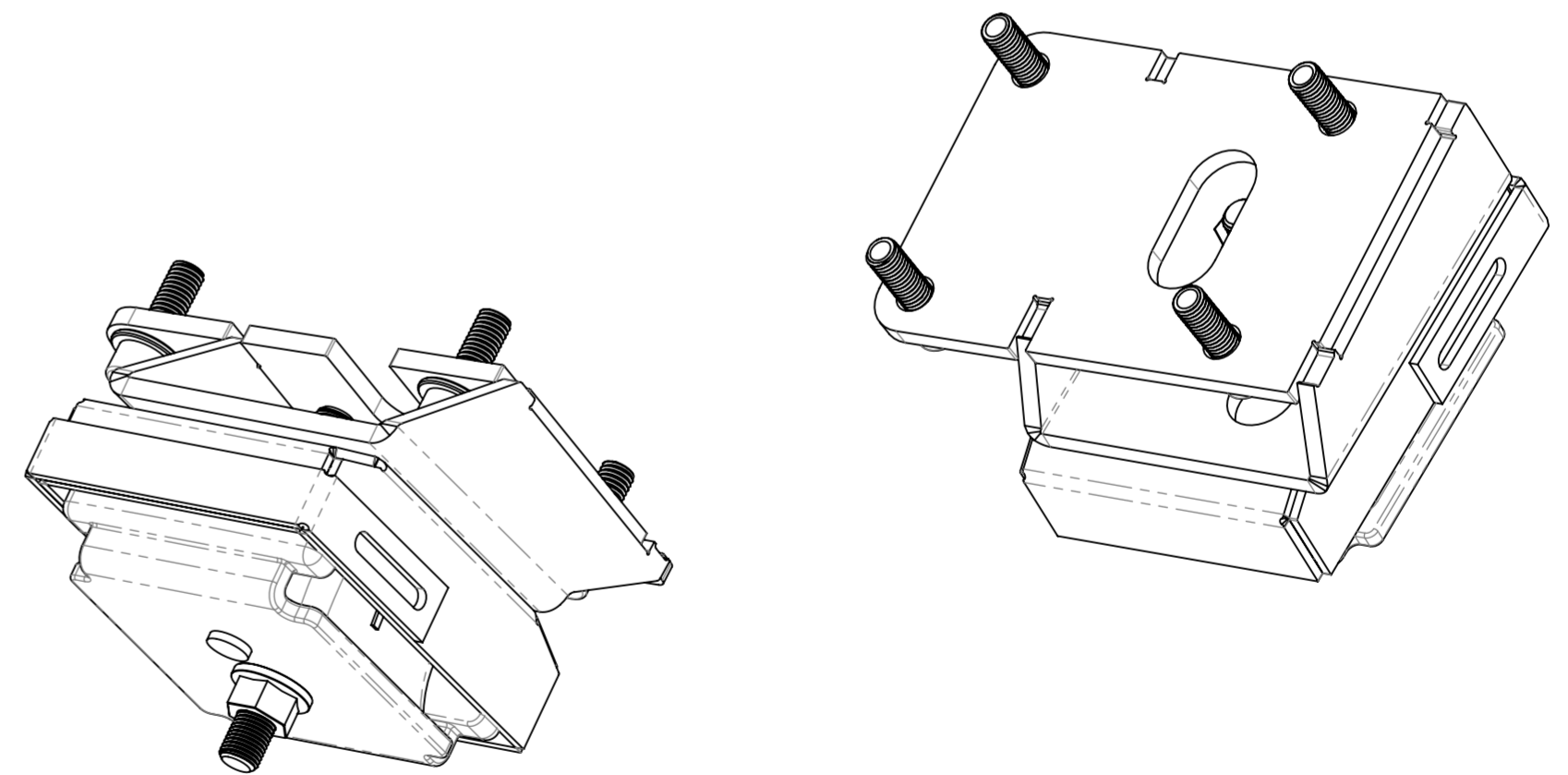


REUSE OEM BRACKET

MFC40272 CAN BE
PURCHASED SEPERATELY
IF REQUIRED

THREAD LOCK COMPOUND
M10 BOLTS (ITEM 6)
M12 NUTS (ITEM 7)
(USE MEDIUM STRENGTH
THREAD LOCK)

TORQUE SPECIFICATIONS
M10 BOLTS (ITEM 6) - 45Nm
M12 NUTS (ITEM 7) - 75Nm



MARKS4WD
385-393 LOWER DANDENONG ROAD,
DINGLEY, VICTORIA, 3172
A.B.N. 28 153 842 829

DRAWN	GDK 28/10/2021	TITLE:	Engine Mount Kit - LS V8 to 80/105 series	
DRAWING CHECKED	PAM 28/10/2021	SCALE: 1:2	DRAWING/PART NUMBER	REV No.
FINISHED WEIGHT: 9.71 kg		DRAWING 1 of 1	MFK1765EM	0