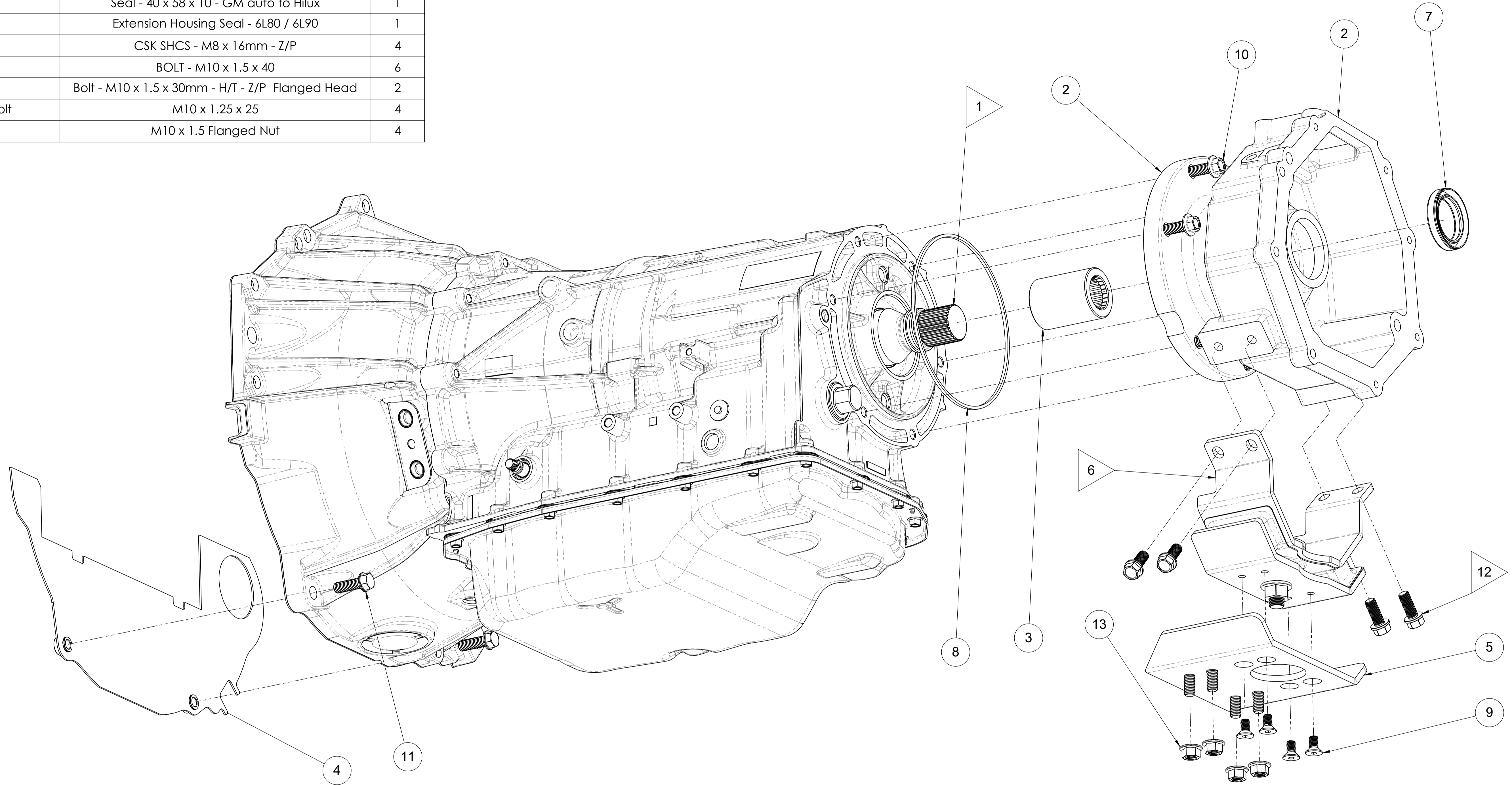


ITEM NO.	PART NUMBER	DESCRIPTION	QTY.
1	6L80 Transmission	6L80 Transmission	1
2	MFC40260	Adaptor Housing 6L80 to R151	1
3	MFC40265	Shaft Coupler 6L80 to R151	1
4	MFC40297	Cover Plate - Fabricated Sump to 6L80	1
5	MFC20560	Crossmember Mount LS to Hilux 98/04	1
6	A7015	Hilux Kun26 Rear Mount Auto & Manual Transmissions	1
7	TC12554	Seal - 40 x 58 x 10 - GM auto to Hilux	1
8	24224675	Extension Housing Seal - 6L80 / 6L90	1
9	CSK-2050	CSK SHCS - M8 x 16mm - Z/P	4
10	BT-2110	BOLT - M10 x 1.5 x 40	6
11	BT-2425	Bolt - M10 x 1.5 x 30mm - H/T - Z/P Flanged Head	2
12	Factory Bolt	M10 x 1.25 x 25	4
13	NT-2032	M10 x 1.5 Flanged Nut	4

### FLAG ITEMS ▶

- (ITEM 1) APPLY LMN GREASE ON TRANSMISSION SPLINE BEFORE FITTING (ITEM 3)
- (ITEM 6) THE CLEARANCE CUTOUT ON THE BRACKET ORIENT AS SHOWN TOWARD THE TRANSMISSION
- (ITEM 12) REUSE THE 4 x M10 x 1.25 x 25 FACTORY FLANGED BOLTS



**THREAD LOCK COMPOUND**  
M8 x 1.25 x 16 BOLTS (ITEM 9)  
M10 x 1.5 x 40 BOLTS (ITEM 10)  
M10 x 1.5 x 30 BOLTS (ITEM 11)  
M10 x 1.25 x 25 BOLTS (ITEM 12)  
M10 x 1.5 FLANGED NUTS (ITEM 13)  
**(USE MEDIUM STRENGTH THREAD LOCK)**

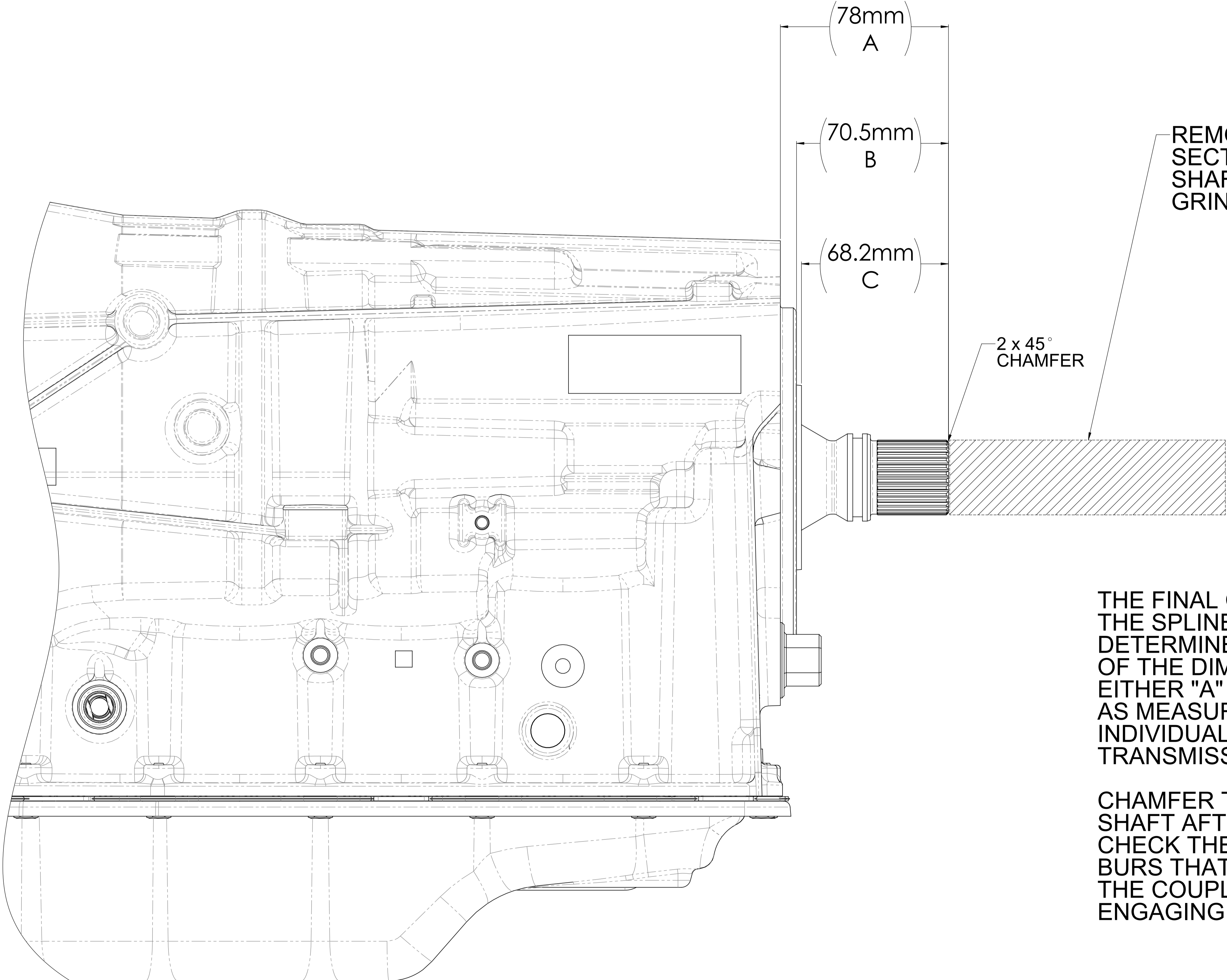
**TORQUE SPECIFICATIONS**  
M8 x 1.25 x 16 BOLTS (ITEM 9) - **28Nm**  
M10 x 1.5 x 40 BOLTS (ITEM 10) - **45Nm**  
M10 x 1.5 x 30 BOLTS (ITEM 11) - **45Nm**  
M10 x 1.25 x 25 BOLTS (ITEM 12) - **40Nm**  
M10 x 1.5 FLANGED NUTS (ITEM 13) - **45Nm**



DRAWN	GDK 15/03/2022	TITLE:	Transfer Case Adaptor Kit - LS 6L80 to 05+ Hilux	
DRAWING CHECKED	PAM 15/03/2022	SCALE:1:2	DRAWING/PART NUMBER	REV No.
FINISHED WEIGHT:		DRAWING 1 of 2	MFK40260	0



# SPLINE SHAFT PREPARATION



REMOVE THE HATCHED SECTION OF THE SPLINE SHAFT USING AN ANGLE GRINDER & CUT OFF DISC

THE FINAL CUT LENGTH OF THE SPLINE SHAFT MAY BE DETERMINED BY USING ONE OF THE DIMENSIONS EITHER "A" OR "B" OR "C" AS MEASURED FROM THE INDIVIDUAL FACE OF THE TRANSMISSION

CHAMFER THE END OF THE SHAFT AFTER CUTTING & CHECK THE SPLINE FOR ANY BURS THAT MAY PREVENT THE COUPLER FROM ENGAGING THE SPLINE



DRAWN	GDK 15/03/2022	TITLE:	Transfer Case Adaptor Kit - LS 6L80 to 05+ Hilux	
DRAWING CHECKED	PAM 15/03/2022	SCALE: 1:1	DRAWING/PART NUMBER	REV No.
FINISHED WEIGHT:		DRAWING 2 of 2	MFK40260	0