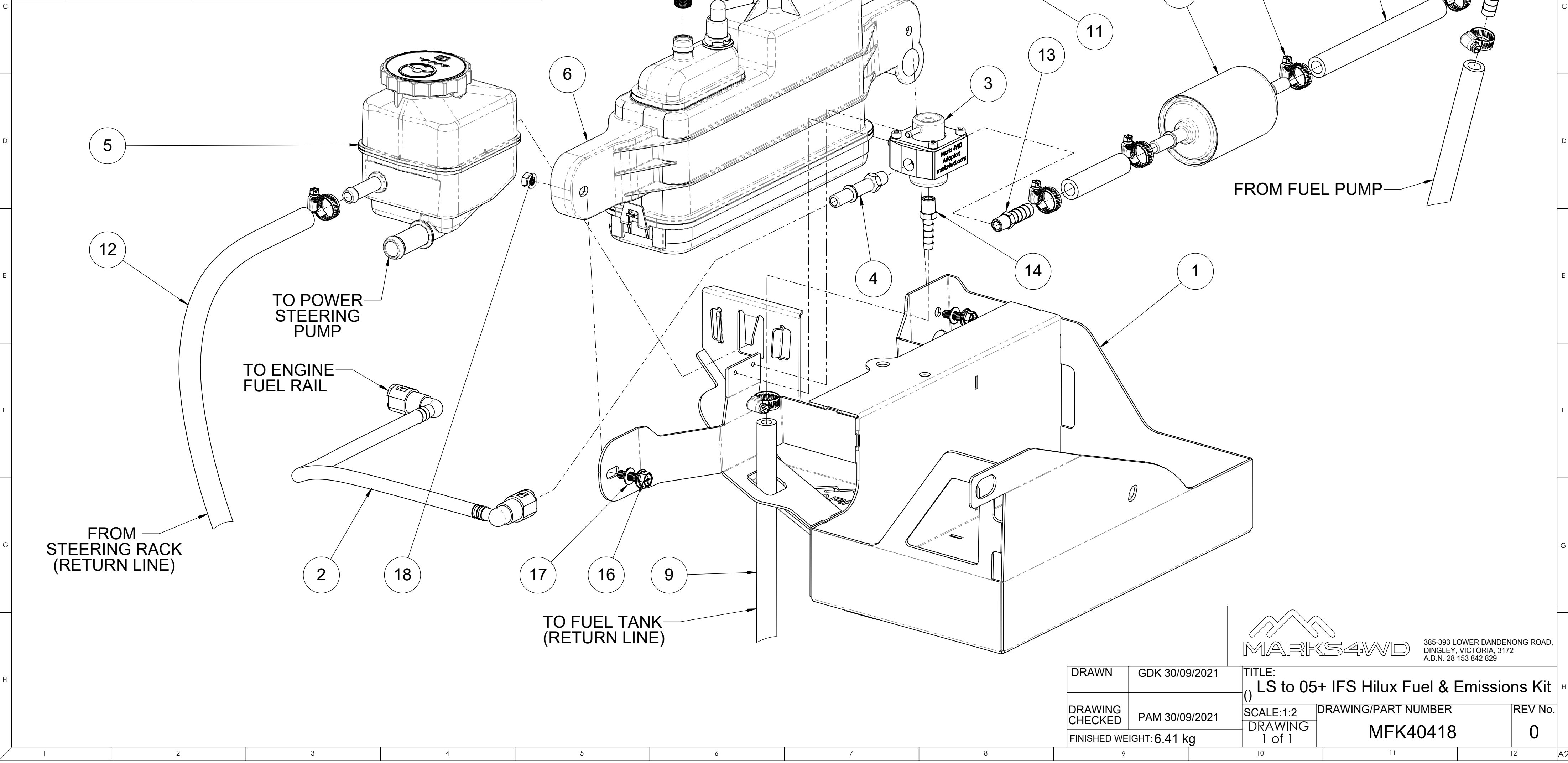


ITEM NO.	PART NUMBER	DESCRIPTION	QTY.
1	MFC40418	LS to 05+ IFS Hilux Fuel & Emissions Assembly	1
2	MFG20078	Hose Fuel Reg to Fuel Rail - 385 x 90° x 90°	1
3	MFG1920	Fuel Pressure Regulator - 4 PSI	1
4	MFC1822	Adaptor Fuel Line to Reg LS1/LS2 to L/C & Nissan	1
5	LS PS Reservoir Bottle	LS Power Steering Reservoir Bottle	1
6	Canister_Body-DL	VE Canister Body	1
7	FS-6503	EFI Fuel Filter - 10mm In x 10mm Out	1
8	06-011-06	3/8" Hose Tail Elbow	1
9	MFC1435EFI/8	Hose - 8mm EFI Fuel - 1m	1
10	MFC1435EFI/10	Hose - 10mm EFI Fuel - 250mm	3
11	4LOLA	1/4" Push-Lok Hose	2
12	6LOLA	3/8" Push-Lok Hose	1
13	06-203-0602	Male Straight Hose Tail - 3/8" Hose x 1/8" NPT Male	1
14	06-203-0402	Male Straight Hose Tail - 1/4" Hose x 1/8" NPT Male	1
15	06-006-0408	Male Elbow Hose Tail - 1/4" Hose x 1/4" BSPT M	1
16	BT-2020	Bolt - M6 x 1 x 20mm - Captured Spring Washer	2
17	FW-2045	Flat Washer - M6 x 12.5 - S/S	2
18	NT-2005	Nut - M6 x 1 - Captured Anti-Vibration Washer	2
19	EFI004P	Hose Clamp - 7-15mm - EFI Fuel Line - S/S	12



**MARKS4WD**

385-393 LOWER DANDENONG ROAD,  
DINGLEY, VICTORIA, 3172  
A.B.N. 28 153 842 829

DRAWN	GDK 30/09/2021	TITLE: LS to 05+ IFS Hilux Fuel & Emissions Kit	
DRAWING CHECKED	PAM 30/09/2021	SCALE:1:2 DRAWING 1 of 1	DRAWING/PART NUMBER MFK40418
FINISHED WEIGHT: 6.41 kg			REV No. 0