

NOTE:
 FAN MOUNTING BOLTS (ITEM 4)
 USE MEDIUM THREAD LOCK
 TORQUE TO 45Nm

WATER PUMP BOLTS (ITEM 6)
 USE MEDIUM THREAD LOCK

WATER PUMP BOLTS (ITEM 6)
 TORQUE IN SEQUENCE

1ST PASS TORQUE TO 15Nm

2ND PASS TORQUE TO 30Nm

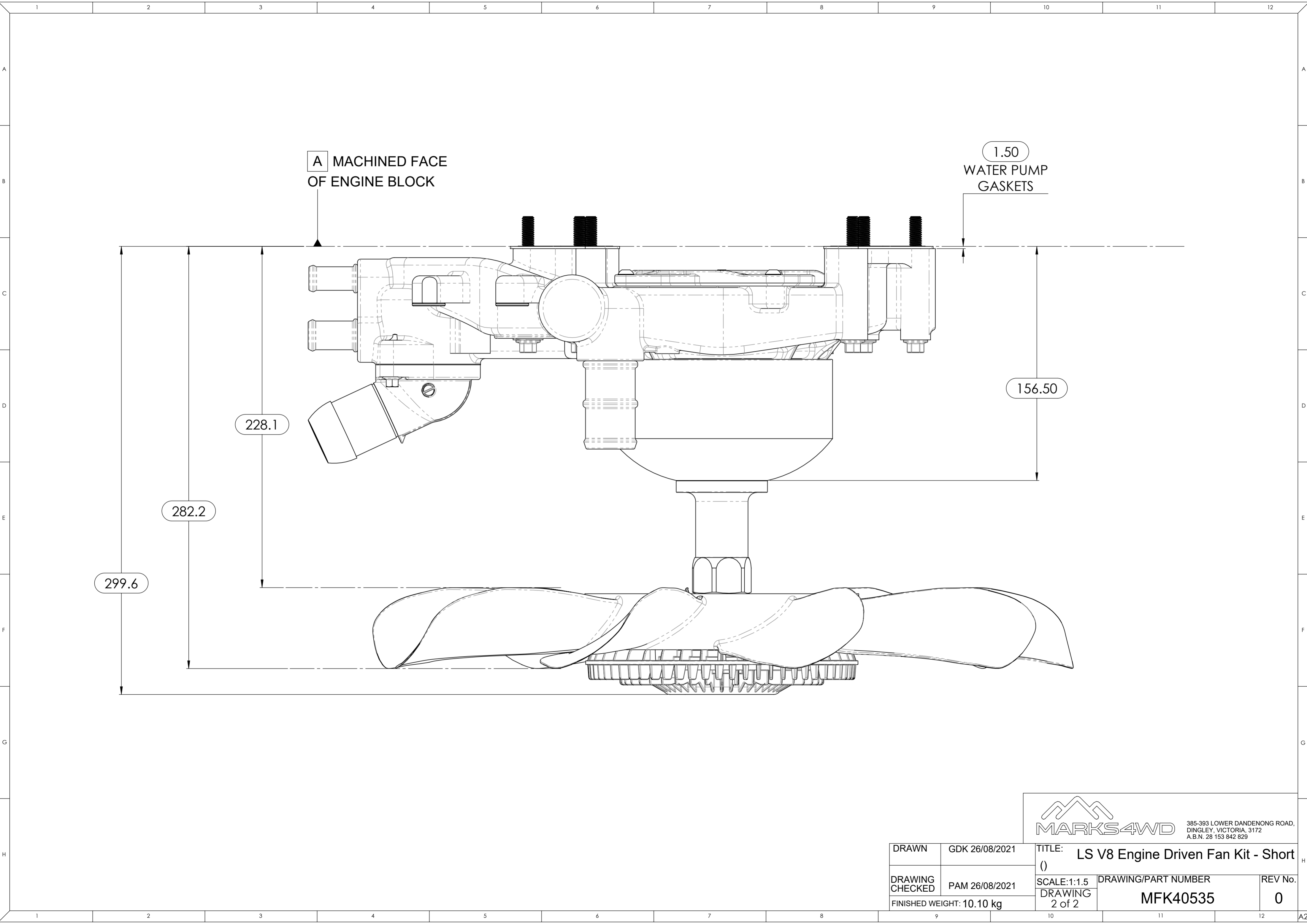
**TORQUE EVENLY BETWEEN
 LEFT & RIGHT MOUNTING PADS**

**NOTE: THE FAN IS MARKED
 "FRONT" WHICH
 ORIENTS THE FAN
 TOWARD THE FRONT
 OF THE VEHICLE**

ITEM NO.	PART NUMBER	DESCRIPTION	QTY.
1	MFG40530-S	LS Water Pump Assembly - Engine Driven Fan Short	1
2	9302260	GM Fan Clutch	1
3	1580692	GM Engine Fan Blade - Reverse Rotation	1
4	M10 x 1.5 x 15	Bolt - M10 x 1.5 x 15 - Z/P	4
5	90201-10075	Spring Washer - M10 - S/S	4
6	LS Water Pump Bolt	LS Water Pump Bolt	6
7	12630223	LS Water Pump Gasket	2

MARKS4WD 385-393 LOWER DANDENONG ROAD,
 DINGLEY, VICTORIA, 3172
 A.B.N. 28 153 842 829

DRAWN	GDK 26/08/2021	TITLE: LS V8 Engine Driven Fan Kit - Short ()	
DRAWING CHECKED	PAM 26/08/2021	SCALE:1:1.5 DRAWING 1 of 2	DRAWING/PART NUMBER MFK40535
FINISHED WEIGHT: 10.10 kg			REV No. 0



A MACHINED FACE
OF ENGINE BLOCK

1.50
WATER PUMP
GASKETS

228.1

282.2

299.6

156.50



385-393 LOWER DANDENONG ROAD,
DINGLEY, VICTORIA, 3172
A.B.N. 28 153 842 829

DRAWN	GDK 26/08/2021	TITLE: LS V8 Engine Driven Fan Kit - Short ()	
DRAWING CHECKED	PAM 26/08/2021	SCALE: 1:1.5 DRAWING 2 of 2	DRAWING/PART NUMBER MFK40535
FINISHED WEIGHT: 10.10 kg			REV No. 0