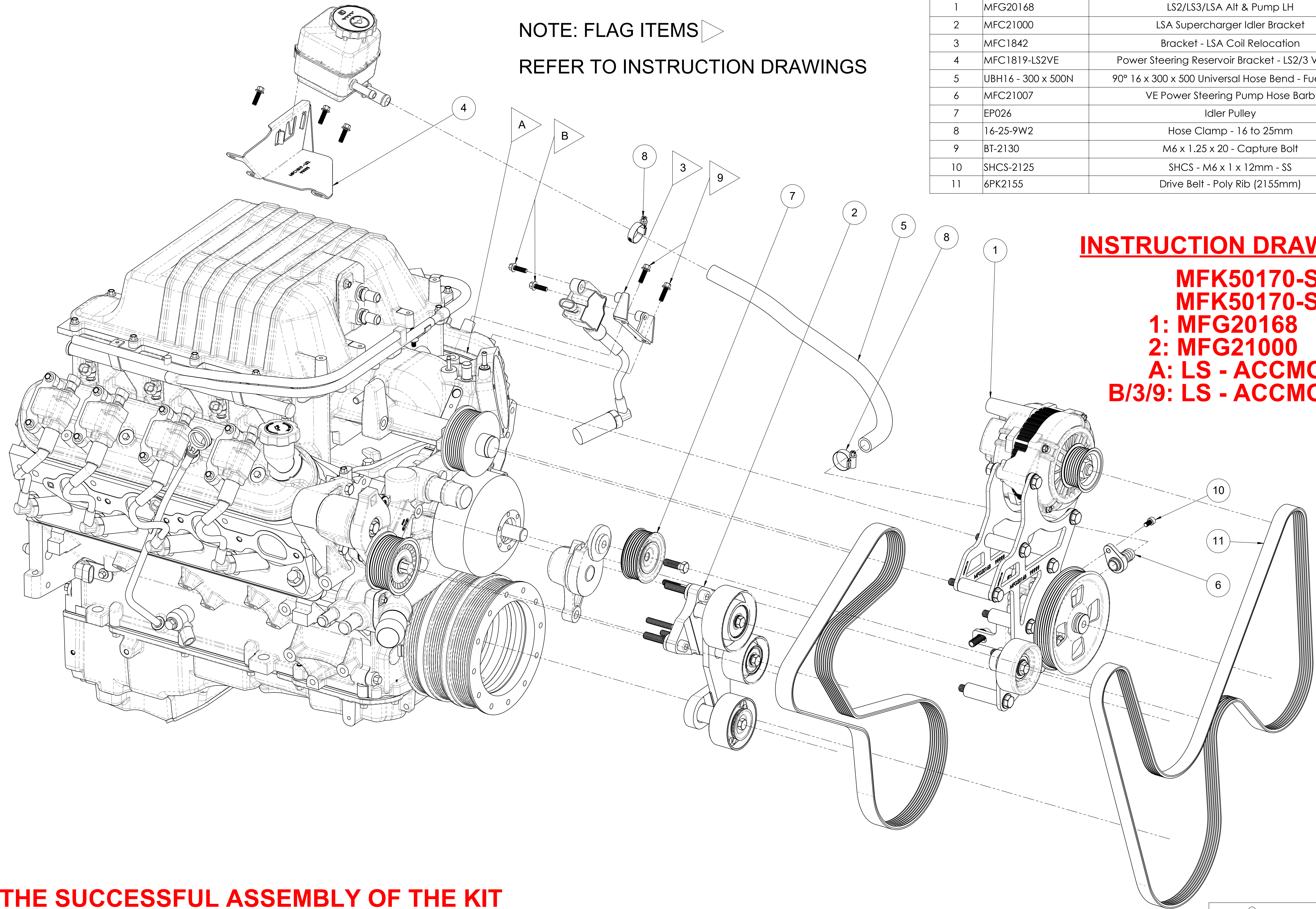


NOTE: FLAG ITEMS ▶
REFER TO INSTRUCTION DRAWINGS

ITEM NO.	PART NUMBER	DESCRIPTION	QTY
1	MFG20168	LS2/LS3/LSA Alt & Pump LH	1
2	MFC21000	LSA Supercharger Idler Bracket	1
3	MFC1842	Bracket - LSA Coil Relocation	1
4	MFC1819-LS2VE	Power Steering Reservoir Bracket - LS2/3 VE - VF	1
5	UBH16 - 300 x 500N	90° 16 x 300 x 500 Universal Hose Bend - Fuel & Oil	1
6	MFC21007	VE Power Steering Pump Hose Barb	1
7	EP026	Idler Pulley	1
8	16-25-9W2	Hose Clamp - 16 to 25mm	2
9	BT-2130	M6 x 1.25 x 20 - Capture Bolt	2
10	SHCS-2125	SHCS - M6 x 1 x 12mm - SS	1
11	6PK2155	Drive Belt - Poly Rib (2155mm)	1



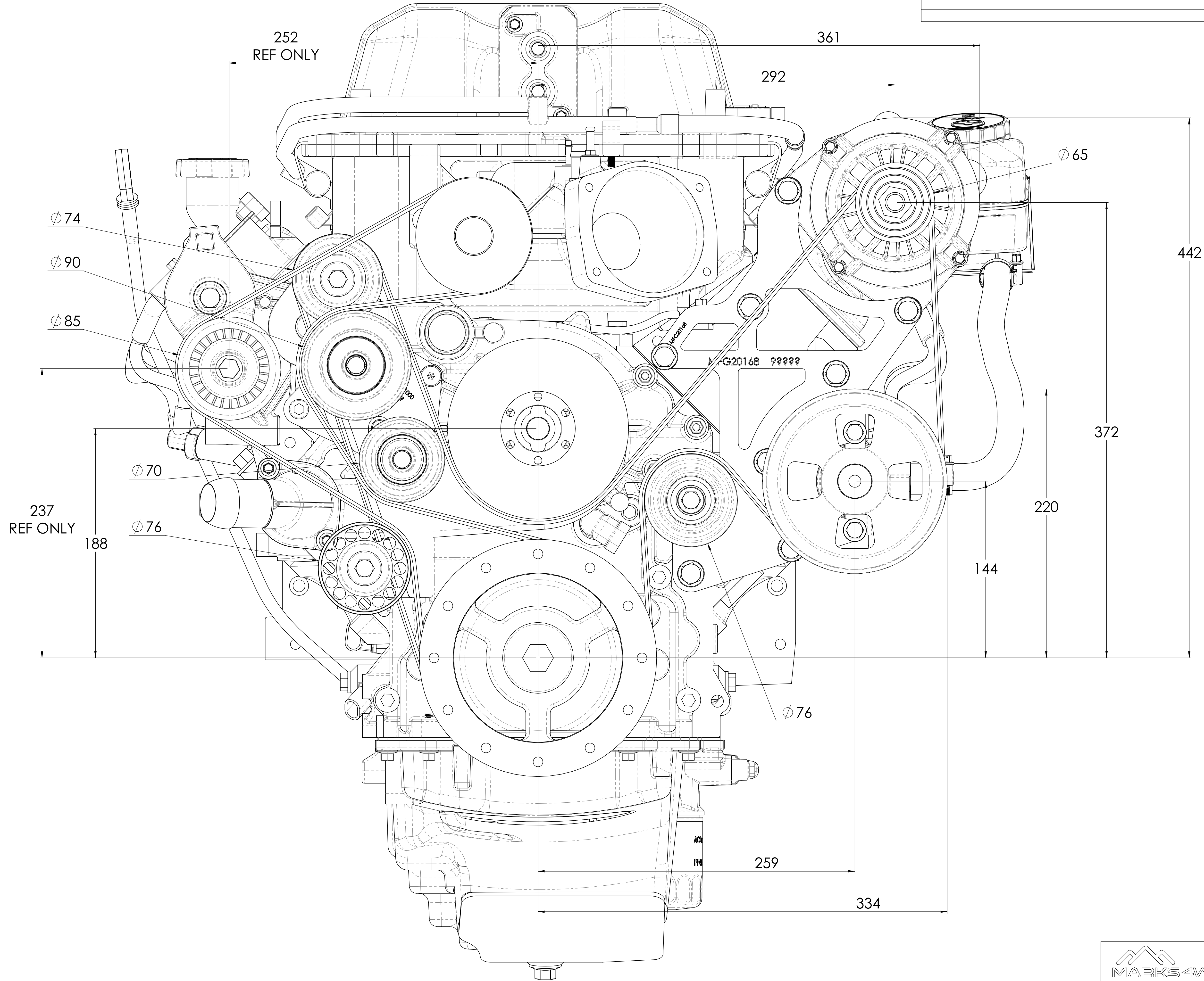
INSTRUCTION DRAWINGS
MFK50170-SHT-1
MFK50170-SHT-2
1: MFG20168
2: MFC21000
A: LS - ACCMOD - 01
B/3/9: LS - ACCMOD - 08

**THE SUCCESSFUL ASSEMBLY OF THE KIT
REQUIRES THE MODIFICATION PROCEDURES
IN THE INSTRUCTION DRAWINGS LISTED ON
THIS SHEET TO BE CAREFULLY FOLLOWED**

DRAWN	GDK 30/03/2021	TITLE	Accessory Kit - LSA - LH 12v, VE+ P/S Pump & Fan
DRAWING CHECKED	PAM 30/03/2021	SCALE: 1:2.5	DRAWING/PART NUMBER
FINISHED WEIGHT: kg		DRAWING	MFK50170
		of 6	REV No.
			0

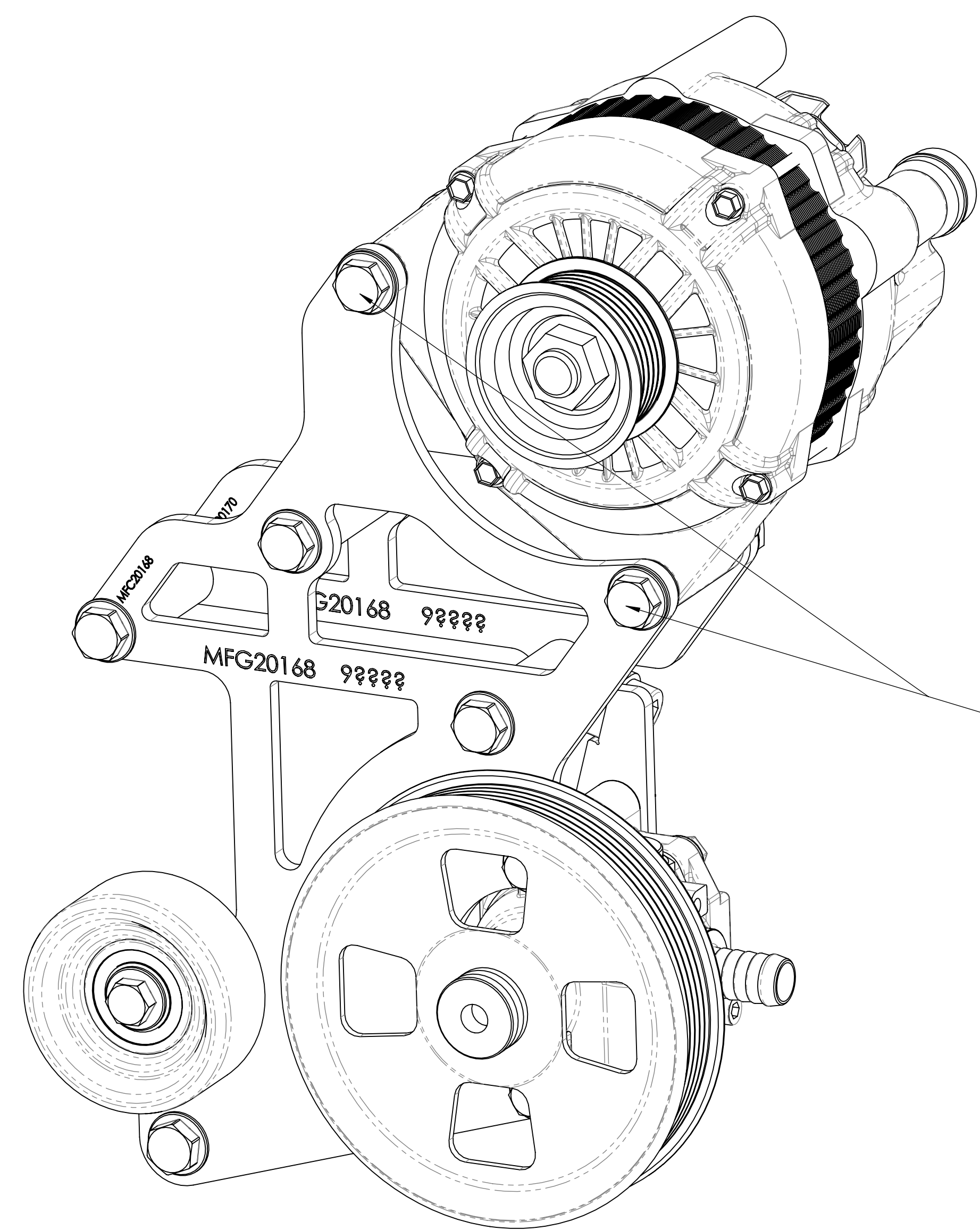
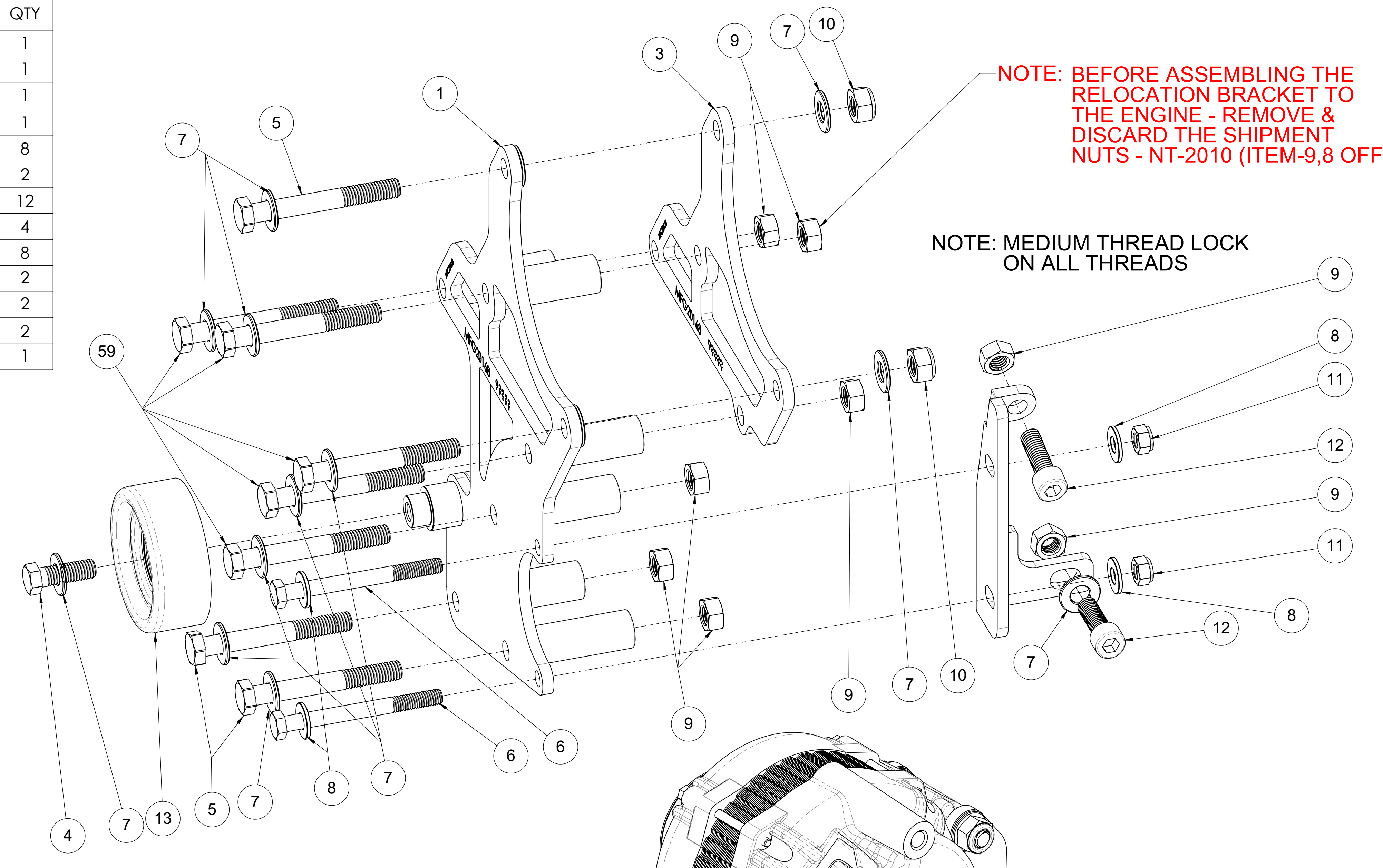


REV ID	CHANGE/DESCRIPTION	ECN No.	APP/DATE



DRAWN	GDK 30/03/2021	TITLE	Accessory Kit - LSA - LH 12v, VE+ P/S Pump & Fan
DRAWING CHECKED	PAM 30/03/2021	SCALE: 1:1.5	DRAWING/PART NUMBER
FINISHED WEIGHT: kg		DRAWING	2 of 6
		REV No.	0
		DRAWING/PART NUMBER	MFK50170

ITEM NO.	PART NUMBER	DESCRIPTION	QTY
1	MFC20168	LS2/LS3/LSA Alt. & VE Pump Relocation Front Plate	1
2	MFC20169	LS2/LS3/LSA Alt. & VE Pump Relocation Base Support Plate	1
3	MFC20170	LS2/LS3/LSA Alt. & VE Pump Relocation Base Plate	1
4	BT-2245	Bolt - M10 x 1.5 x 30mm - H/T - Z/P	1
5	BT-2270	BOLT - M10 X 1.5 X 80mm - H/T - Z/P	8
6	BT-2090	BOLT - M8 X 1.25 X 85MM - H/T - Z/P	2
7	FW-2010	Flat Washer - M10 x 22 x 2mm	12
8	FW-2050	Flat Washer - M8 x 19 x 2L - H/T - Z/P	4
9	NT-2010	Nut - M10 X 1.5 - Z/P	8
10	NT-2030	Nut - M10 X 1.5 - Nyloc - Z/P	2
11	NT-2110	M8 Nyloc Nut	2
12	SHCS-2045	SHCS - M10 x 1.5 x 30mm - Z/P	2
13	EP024	Idler Pulley 76 O.D x 29.5 W x 17 I.D	1

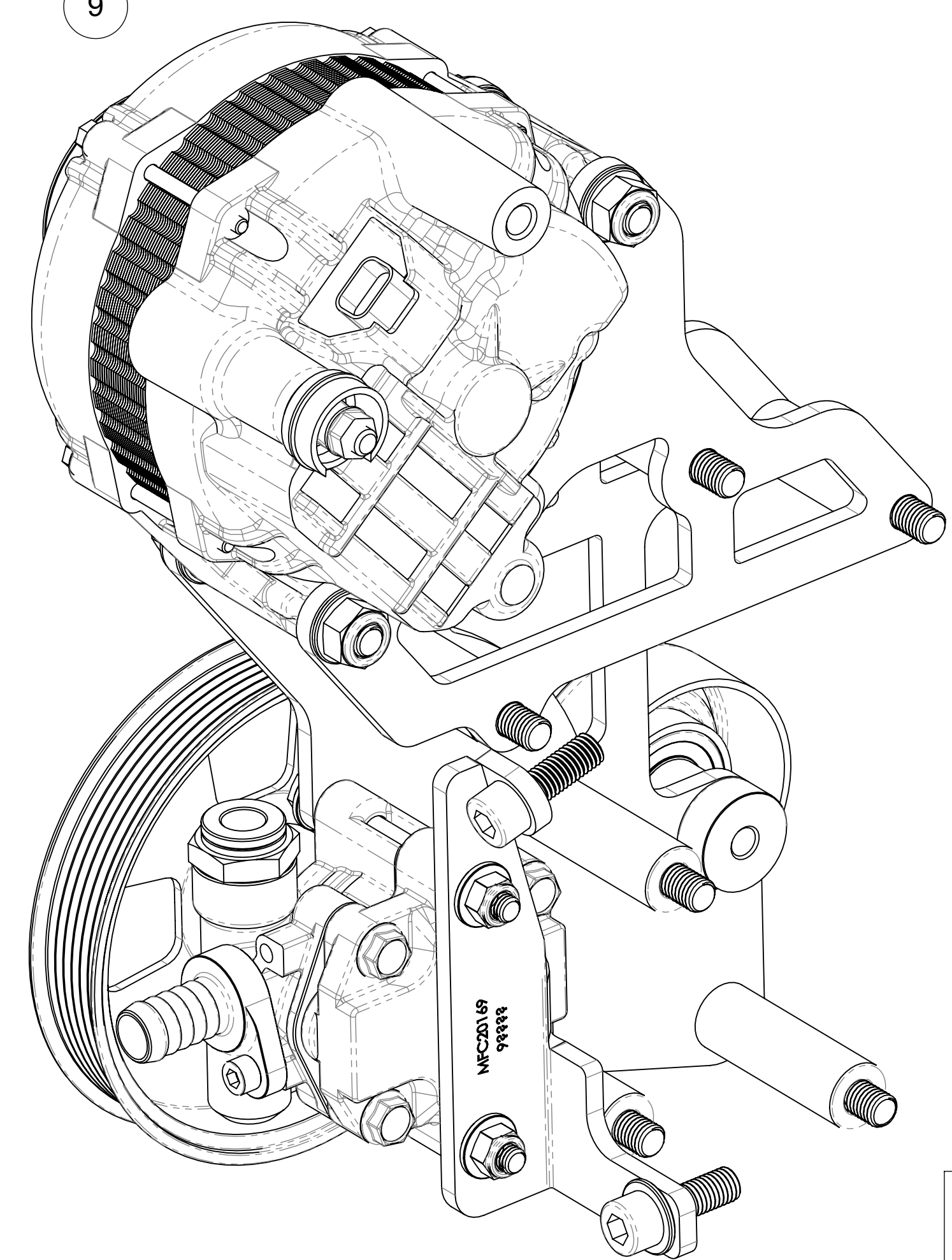


2 BOLTS HOLDING THE 12 V ACCESSORY TORQUE TO 65Nm

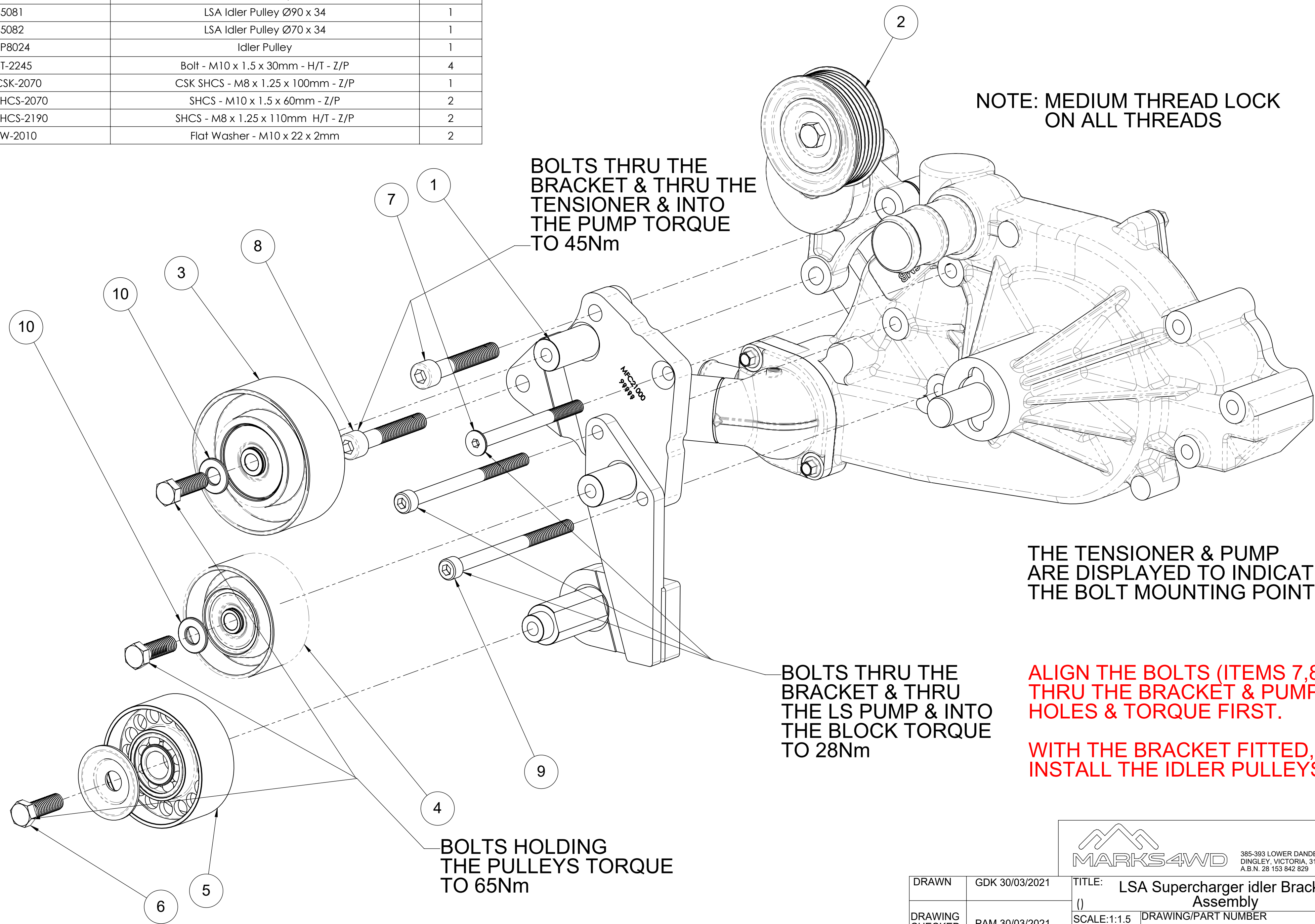
ITEM-6 BOLTS HOLDING THE PUMP TORQUE TO 28Nm

ITEM-4 BOLT HOLDING THE IDLER TORQUE TO 65Nm

BOLTS INTO THE HEAD & BLOCK TORQUE TO 45Nm



ITEM NO.	PART NUMBER	DESCRIPTION	QTY
1	MFC21000	LSA Supercharger Idler Bracket	1
2	EP026	Idler Pulley	1
3	45081	LSA Idler Pulley Ø90 x 34	1
4	45082	LSA Idler Pulley Ø70 x 34	1
5	EP8024	Idler Pulley	1
6	BT-2245	Bolt - M10 x 1.5 x 30mm - H/T - Z/P	4
7	CSK-2070	CSK SHCS - M8 x 1.25 x 100mm - Z/P	1
8	SHCS-2070	SHCS - M10 x 1.5 x 60mm - Z/P	2
9	SHCS-2190	SHCS - M8 x 1.25 x 110mm H/T - Z/P	2
10	FW-2010	Flat Washer - M10 x 22 x 2mm	2



NOTE: MEDIUM THREAD LOCK ON ALL THREADS

BOLTS THRU THE BRACKET & THRU THE TENSIONER & INTO THE PUMP TORQUE TO 45Nm

THE TENSIONER & PUMP ARE DISPLAYED TO INDICATE THE BOLT MOUNTING POINTS

BOLTS THRU THE BRACKET & THRU THE LS PUMP & INTO THE BLOCK TORQUE TO 28Nm

ALIGN THE BOLTS (ITEMS 7,8,9) THRU THE BRACKET & PUMP HOLES & TORQUE FIRST.

WITH THE BRACKET FITTED, INSTALL THE IDLER PULLEYS

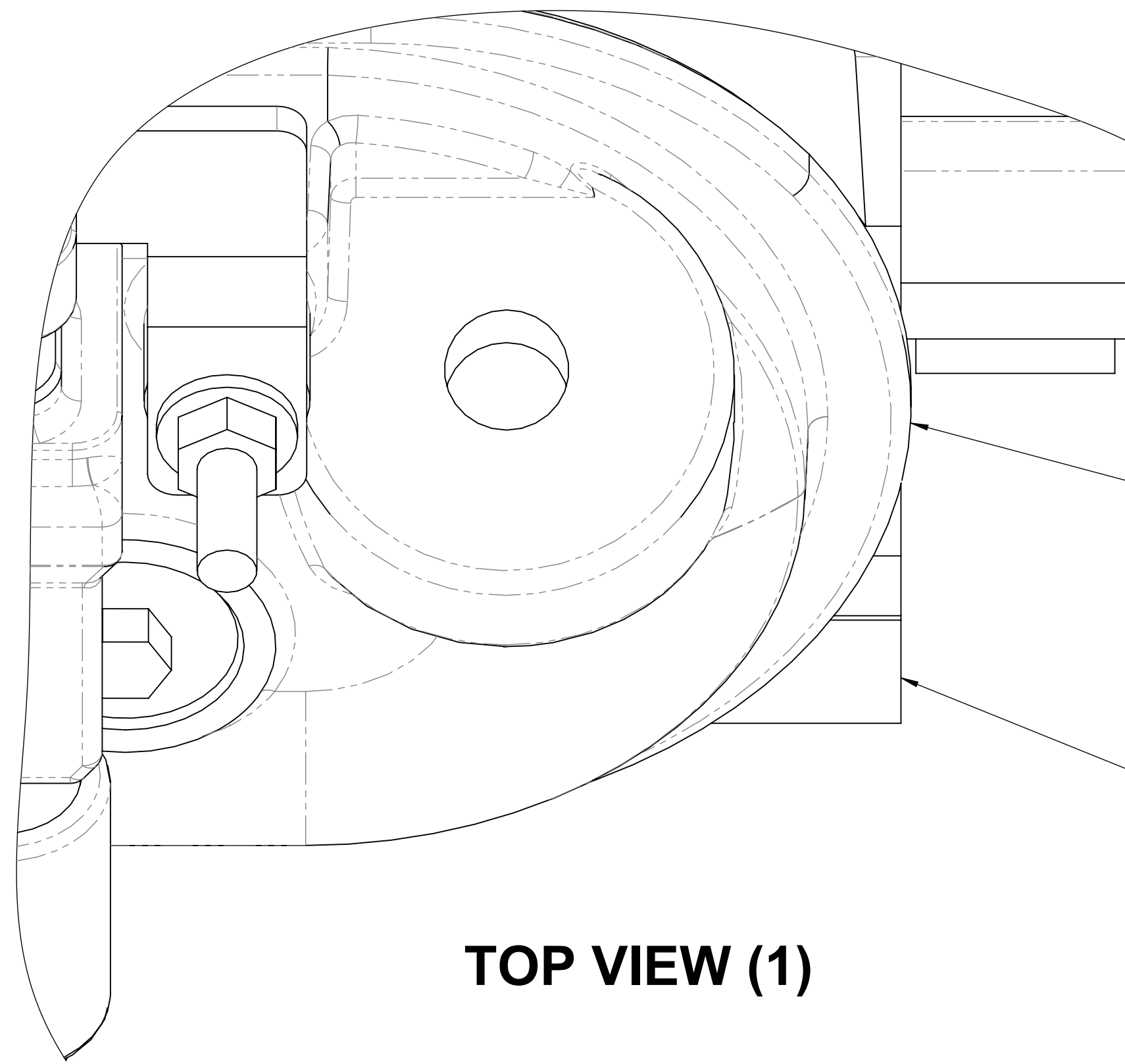
BOLTS HOLDING THE PULLEYS TORQUE TO 65Nm

MARKS4WD 385-393 LOWER DANDENONG ROAD, DINGLEY, VICTORIA, 3172 A.B.N. 28 153 842 829

DRAWN	GDK 30/03/2021	TITLE:	LSA Supercharger idler Bracket Assembly	
DRAWING CHECKED	PAM 30/03/2021	SCALE:1:1.5	DRAWING/PART NUMBER	REV No.
FINISHED WEIGHT: kg		DRAWING 4 of 6	MFG21000	0

LS - SERIES ROCKER COVER LIP MODIFICATION

STANDARD ROCKER COVER



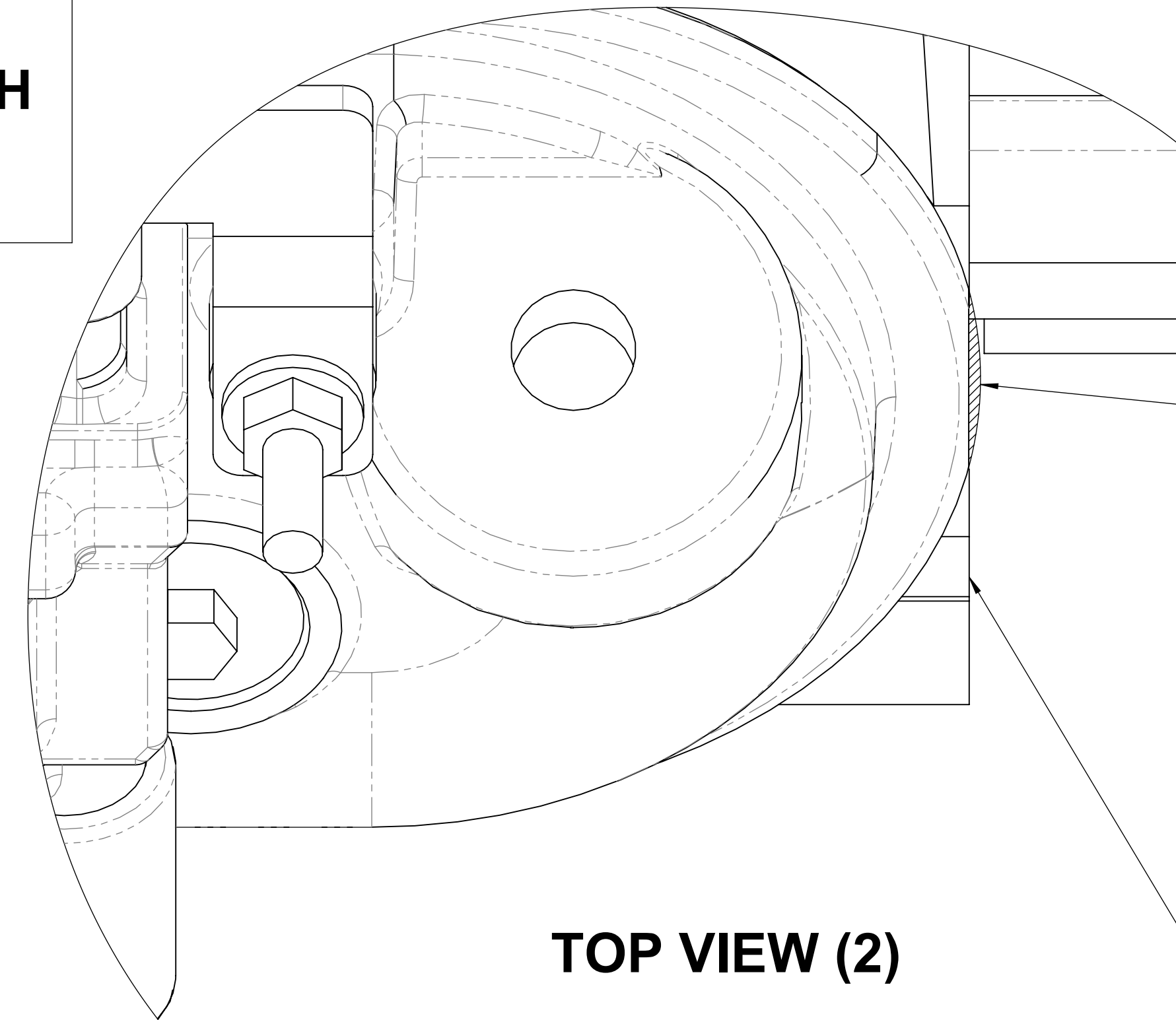
TOP VIEW (1)

THE LIP MODIFICATION SHOWS THE DRIVER SIDE CYLINDER HEAD FITTED WITH THE PASSENGER SIDE ROCKER COVER

PASSENGER SIDE ROCKER COVER LIP SITS ABOVE THE CYLINDER HEAD

DRIVER SIDE CYLINDER HEAD FACE SHOWN

MODIFIED ROCKER COVER



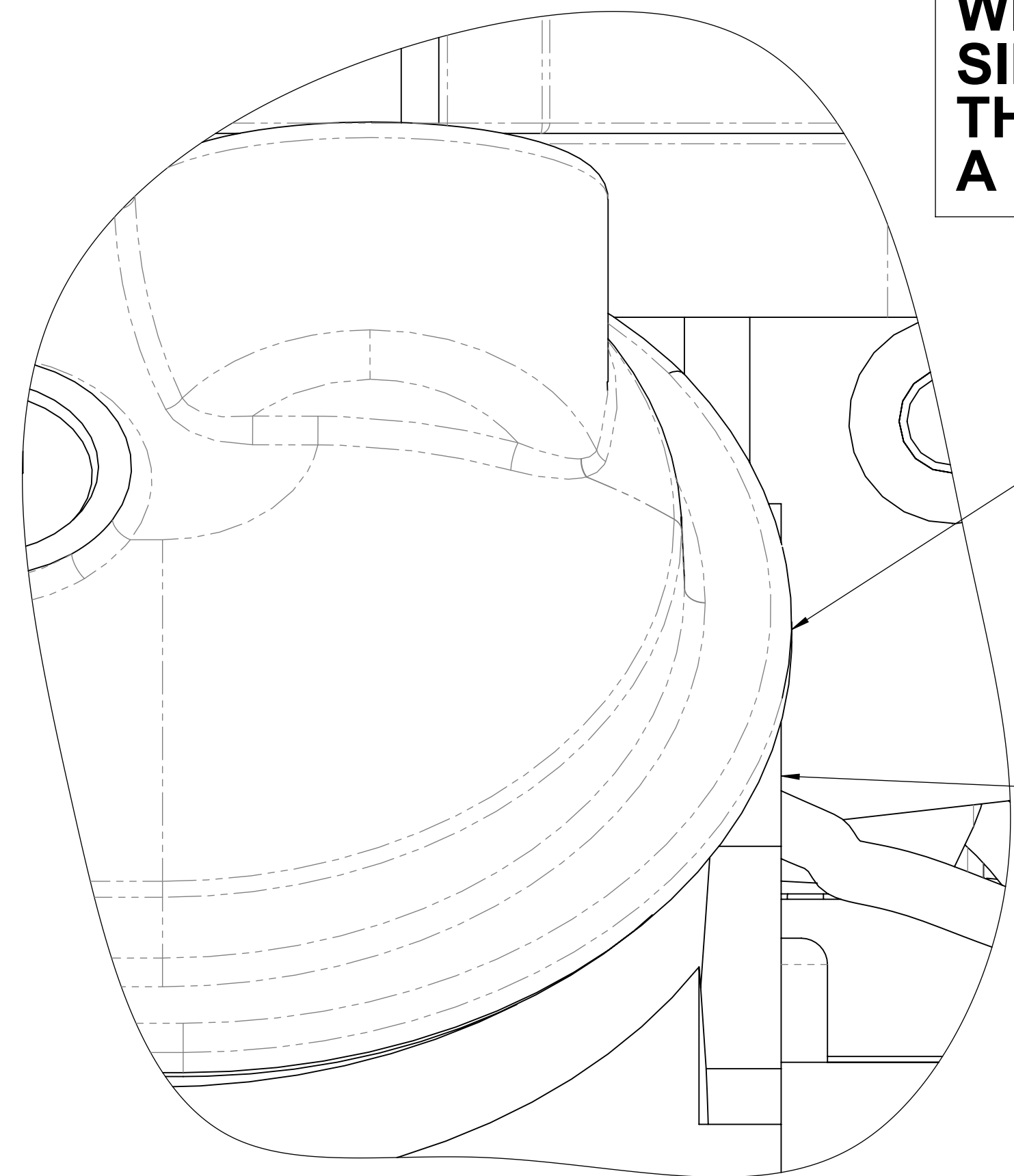
TOP VIEW (2)

DRIVER SIDE ROCKER COVER LIP REMOVE THE HATCHED AREA AS SHOWN

SHAVED ROCKER LIP SHOULD LOOK LIKE THE SIDE VIEW (2) BELOW

DRIVER SIDE CYLINDER HEAD FACE SHOWN

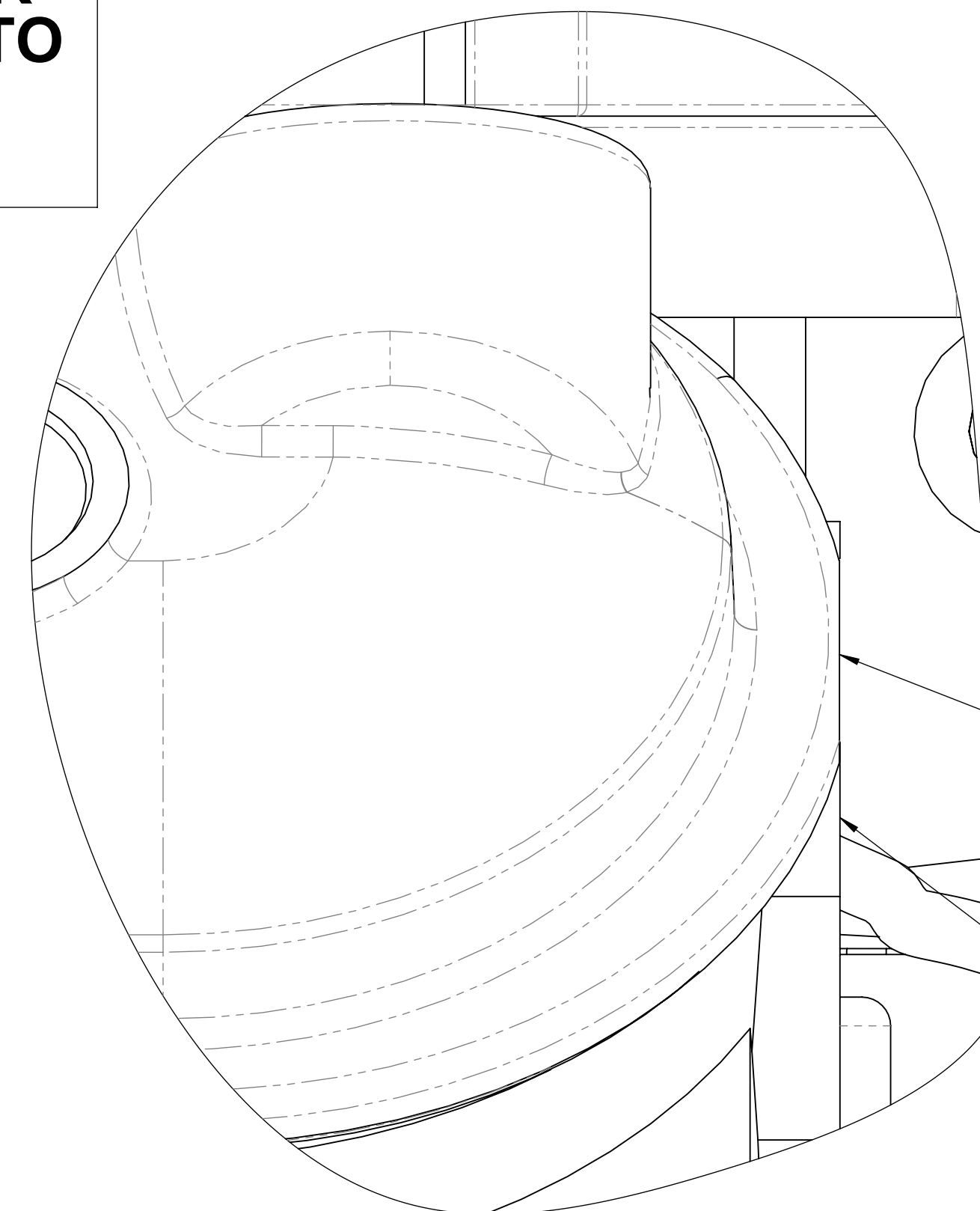
THE ROCKER COVER LIP MODIFICATION WILL ALSO BE REQUIRED FOR THE DRIVER SIDE ROCKER COVER WHEN IT IS FITTED TO THE PASSENGER SIDE CYLINDER HEAD IF A LH ACCESSORY KIT IS TO BE FITTED



SIDE VIEW (1)

PASSENGER SIDE ROCKER COVER LIP SITS ABOVE THE CYLINDER HEAD

DRIVER SIDE CYLINDER HEAD FACE SHOWN



SIDE VIEW (2)

THE LIP OVER HANG MUST BE SHAVED BACK TO THE CYLINDER HEAD FACE

CAUTION: DO NOT SHAVE PAST THE CYLINDER HEAD & ENCROACH INTO THE O RING GROOVE

PASSENGER SIDE ROCKER COVER LIP SHAVED

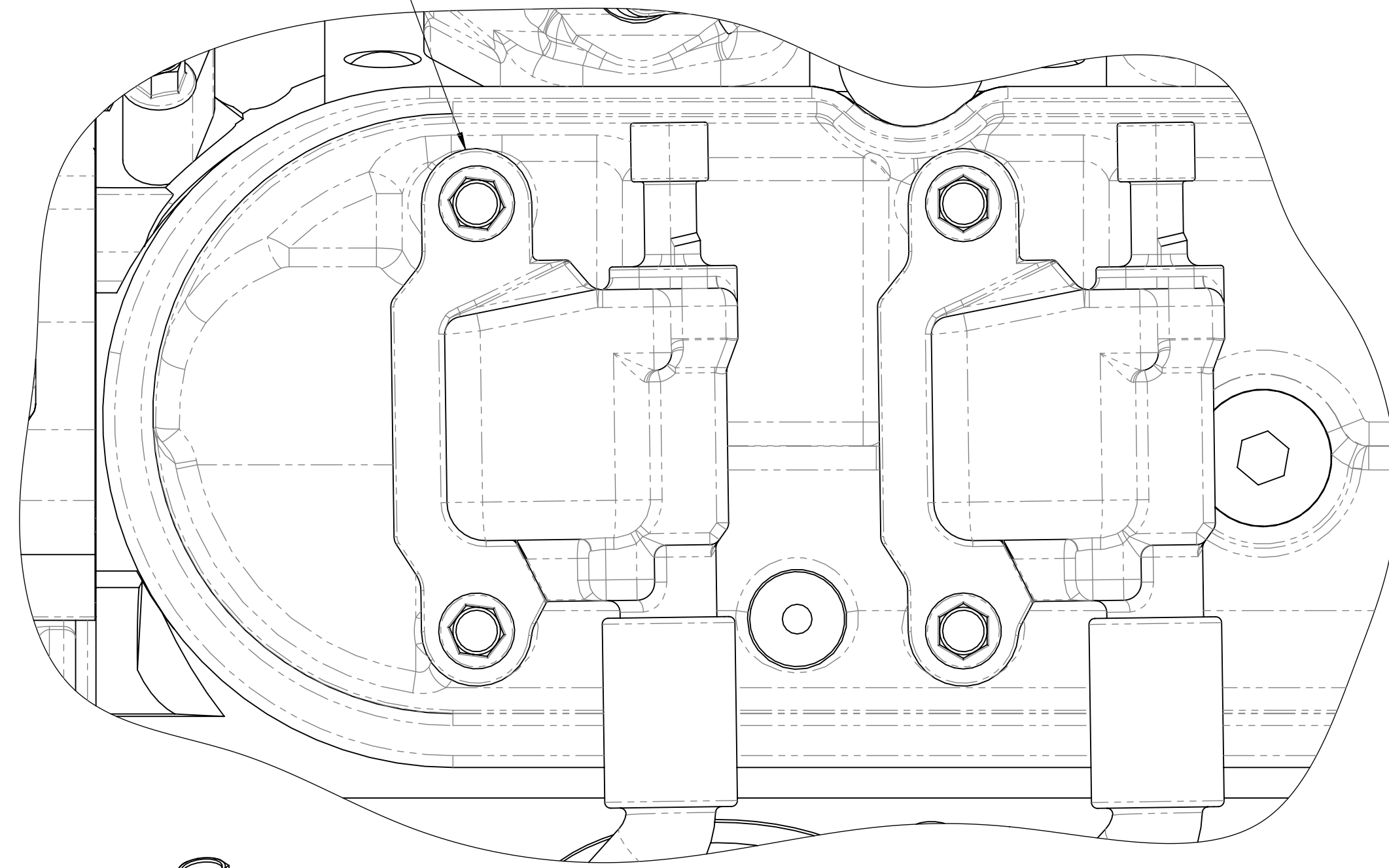
DRIVER SIDE CYLINDER HEAD FACE SHOWN



DRAWN	GDK 30/03/2021	TITLE:	LS - Series Rocker Cover Lip Modification	
DRAWING CHECKED	PAM 30/03/2021	()	DRAWING/PART NUMBER	REV No.
FINISHED WEIGHT: kg		SCALE: 2:1	LS - ACCMOD - 01	0
		DRAWING 5 of 6		

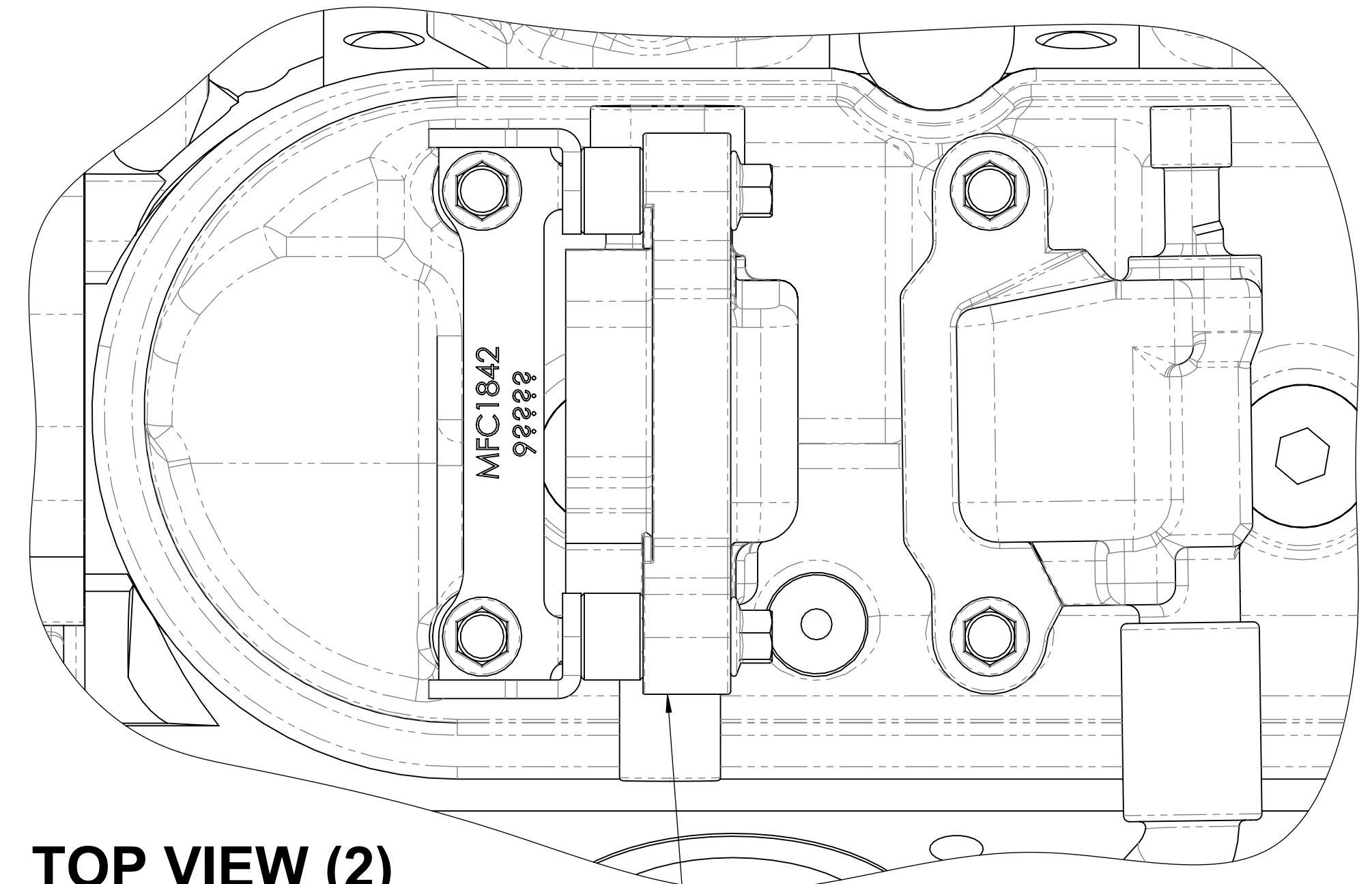
LSA - SERIES PASSENGER SIDE COIL RELOCATION BRACKET MFC1842

STANDARD PASSENGER SIDE
COIL IN FACTORY POSITION



TOP VIEW (1)

PASSENGER SIDE COIL SHOWN
IN RELOCATED POSITION



TOP VIEW (2)

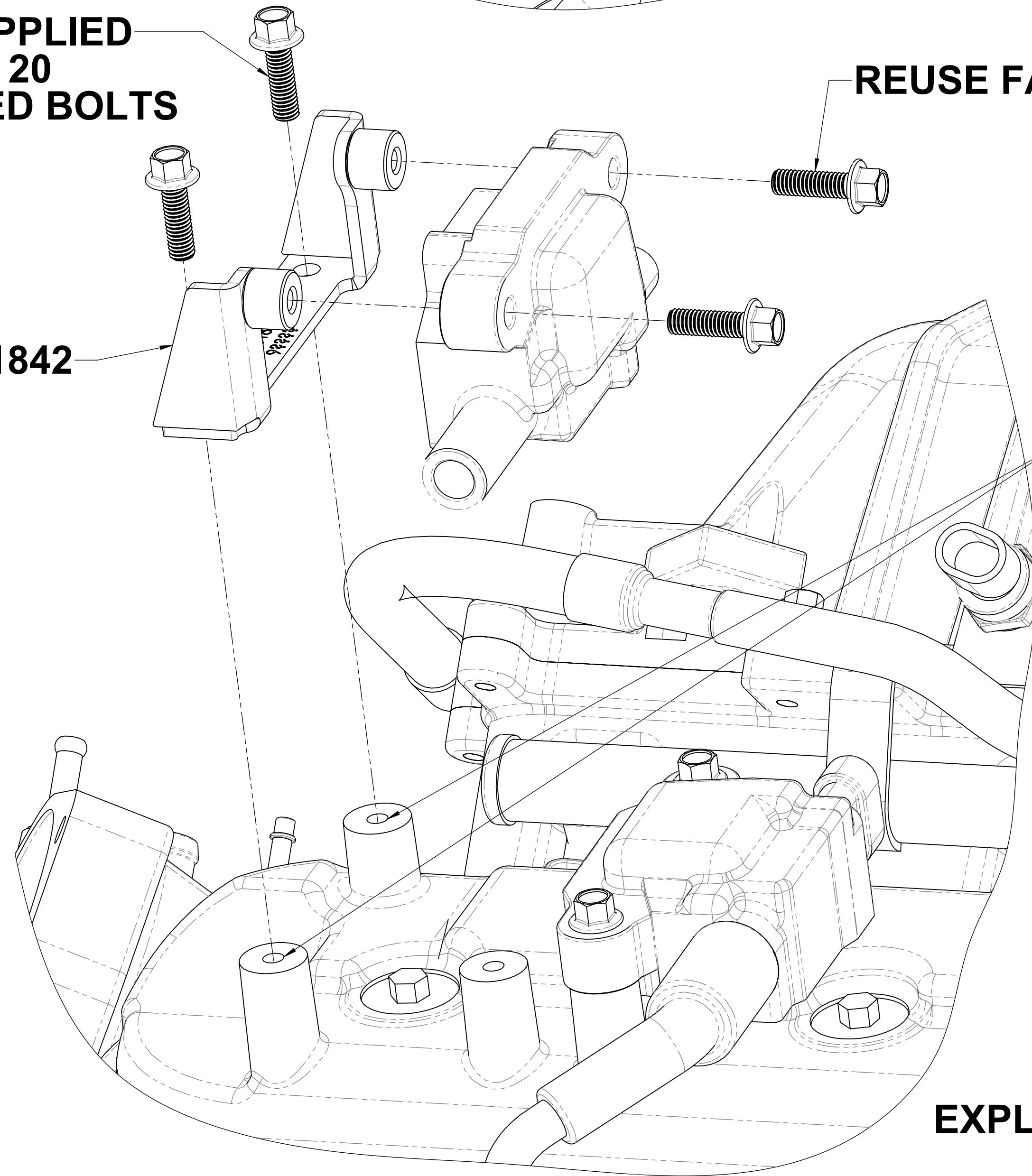
USE SUPPLIED
2 x M6 x 20
FLANGED BOLTS
BT-2130

REUSE FACTORY BOLTS

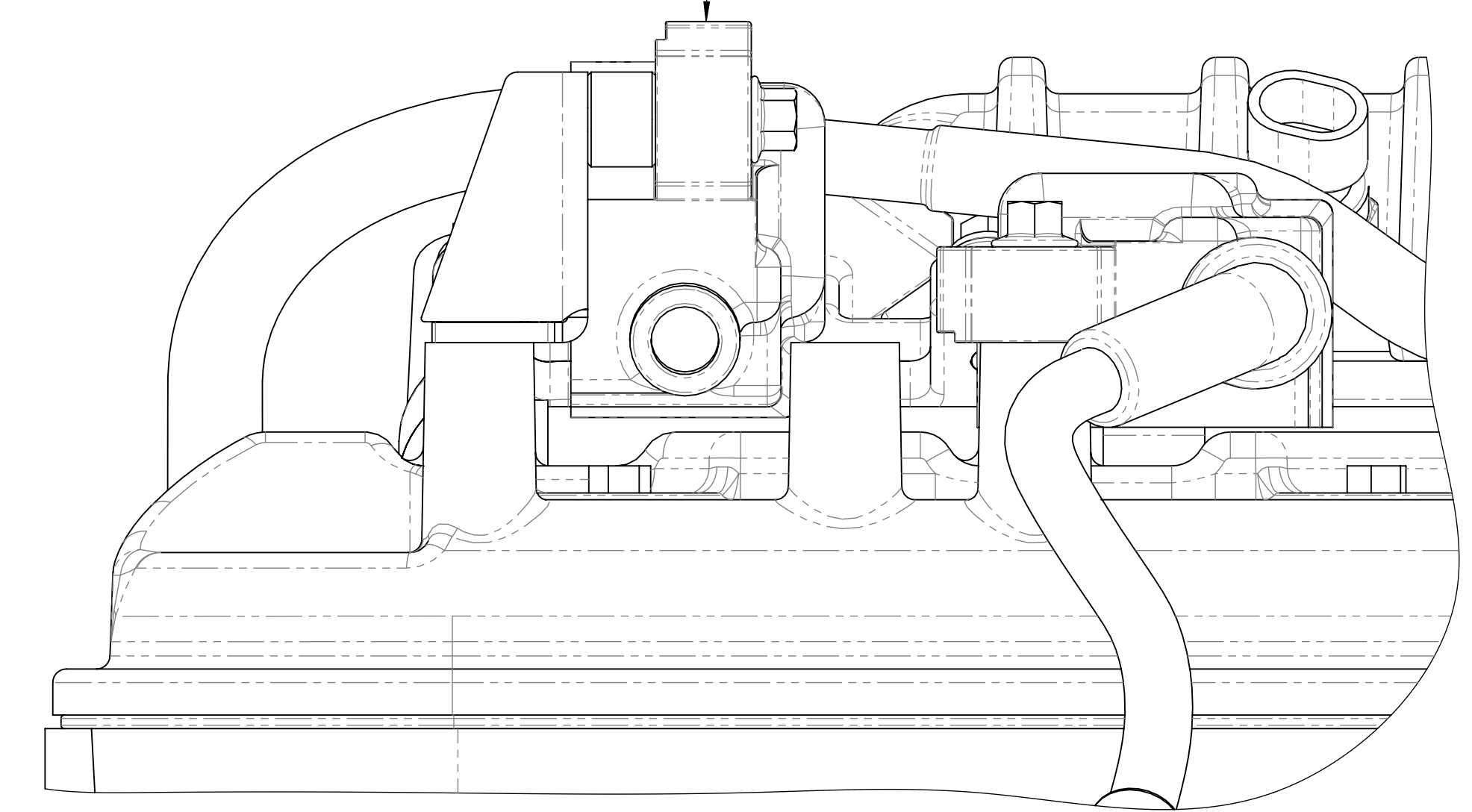
MFC1842

REASSEMBLE THE LS COIL TO
MFC1842 IN THE ORIENTATION
SHOWN THEN FASTEN MFC1842
TO THE ORIGINAL MOUNTING BOSSES
ON THE ROCKER COVER AS SHOWN
IN THE EXPLODED VIEW

RELOCATED COIL POSITION
USING RELOCATION BRACKET
MFC1842 AS SHOWN IN
TOP VIEW (2) & SIDE VIEW (2)



EXPLODED VIEW



SIDE VIEW (2)

DRAWN	GDK 30/03/2021	TITLE:	LSA Coil Relocation	
DRAWING CHECKED	PAM 30/03/2021	SCALE: 1:2:1	DRAWING/PART NUMBER	REV No.
FINISHED WEIGHT: kg		DRAWING 6 of 6	LS - ACCMOD - 08	0