



Leaders In Vehicle Integration

**TOYOTA LANDCRUISER LC79 Dual Cab
1999-2020 MY**

LC79 Dual Armrest kit

NSV07-79ARM-02

INSTALLATION GUIDE



Part No. NSV07-79ARM-02
Revision Date 18/05/21
Copyright 2021 by NSV Australia

Contents

1. Introduction

2-3

1.1 Pre-installation Preparation

2

1.2 Tools and equipment

2

1.3 Safety Precautions

2

1.4 Kit Components

3

2. Installation Instructions

4-5

3. Installation Complete

5

1. Introduction

IMPORTANT

Please ensure that you read and review this guide in its entirety before attempting any modifications to vehicle.

1.1 Pre-installation Preparation

For a full list of what is required, please refer to the Tools & Equipment section of this document. Make sure you check that you have all the equipment on hand prior to starting. Take a good look through the items in the kit and familiarise yourself with each item.

1.2 Tools and Equipment

- Sharp Utility Knife or similar
- 10mm Open Ended Spanner
- 13mm Socket
- 14mm Socket

1.3 Safety Precautions

It is the responsibility of the installer to ensure all safety precautions are taken during the installation of this kit.

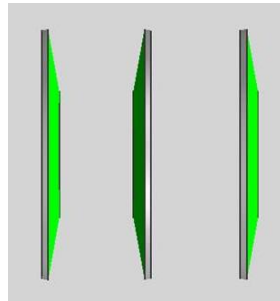
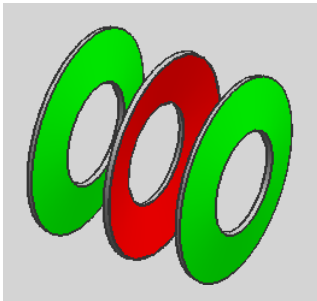
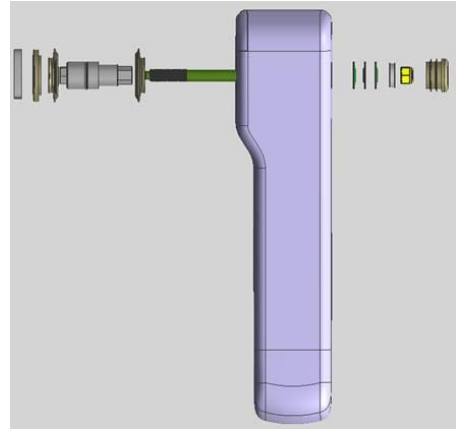
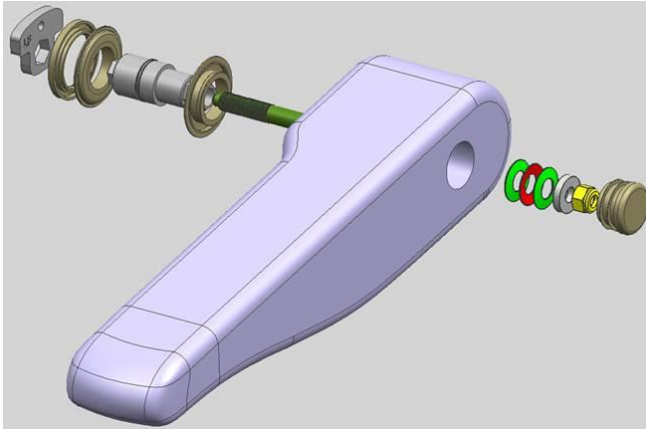
All tools and equipment must be in good working condition and appropriate for the intended task.

All appropriate Personal Protection Equipment (PPE) must be worn, including safety glasses and gloves if required.

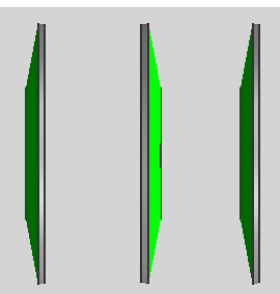
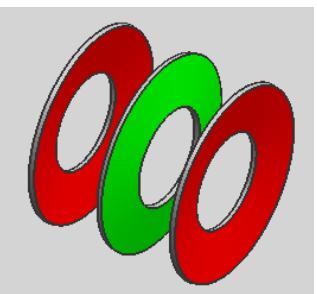
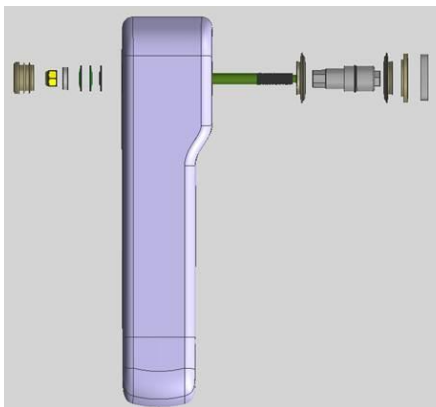
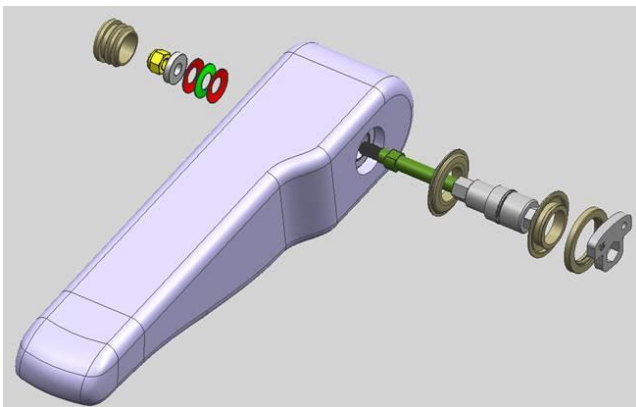
If you are unsure at any stage of the installation, STOP WORK, make safe the immediate work area and seek assistance.

1.4 Kit Components

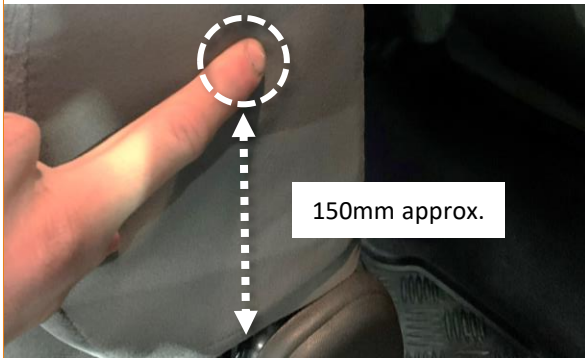
Right Hand Drivers side seat components



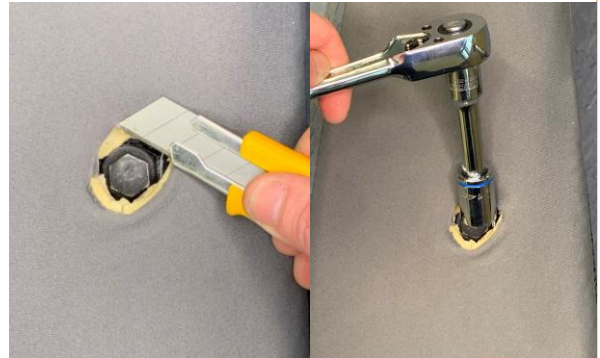
Left Hand Passenger side seat components



2. Installation Instructions – Right Hand Drivers Seat



1. Feel the side of the seat for a bolt head (in the vicinity of 150mm from the plastic trim on the side of the seat as shown).



2. Using a sharp utility knife or similar, make a hole around the bolt head big enough for the supplied mounting plate to pass through. Use a **14mm Socket** to remove the existing bolt from seat frame.



3. Insert plate marked "LF" through the hole, the overhanging shoulders will rest atop the upright bracket. The nut on the seat should be evident through the hexagon slot on the plate.



4. Insert inner cloth clip behind seat fabric, then place outer cloth clip (colour matched to arm rest) over the top and clip the two parts together.



5. Insert the outer shaft into the plate, it is essential that the hexagonal end of the shaft slots into the hexagonal slot in the plate.



6. The inner stud can then be fitted and secured to the captive nut in the seat bracket. Tighten firmly into position using **10mm Open Ended Spanner**.

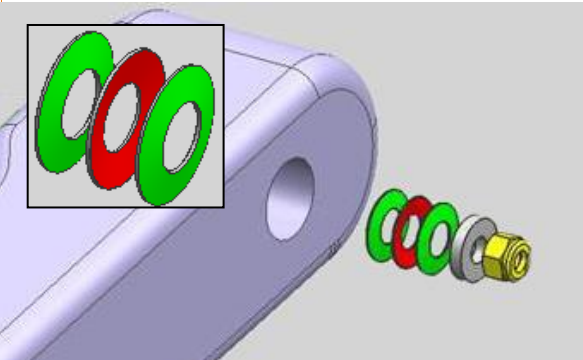
2. Installation Instructions – Right Hand Drivers Seat



7. The inner arm rest cap can be placed on the shaft as shown.



8. The arm rest can then be installed (the orientation of the armrest on the shaft will set the lowest tilt adjustment point of the armrest).



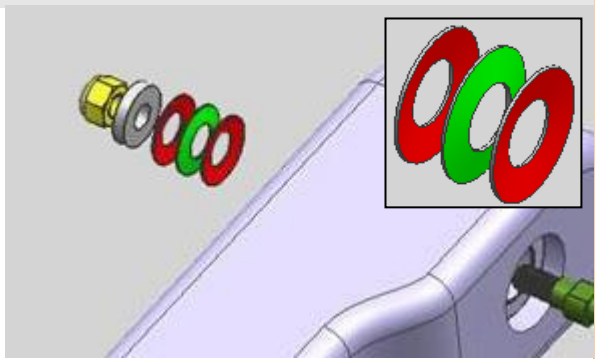
9. The arm rest can now be bolted up, please note the orientation of the spring washers as shown, followed by the supplied flat washer and nut.



10. Use a **13mm Socket** to tighten the nut firmly into position. Once the arm rest is bolted in, the end cap can be installed to complete the installation.

11. Installation is mirrored for Left Hand Passenger's seat armrest, simply repeat steps 1-10

IMPORTANT PLEASE NOTE: For Left Hand Passengers seat armrest please ensure correct "RF" mounting plate is used and that all washers are arranged as per below images.





Leaders In Vehicle Integration

www.nsvaustralia.com.au

NSV Australia Head Office

9-12 HUME RESERVE CT, BELL PARK VIC 3215, AUSTRALIA

PH: +61 3 5278 5300