



## Fitting Instructions for MFK40262 Engine Mount Kit LS V8 to 05+ IFS Toyota Hilux KUN26



### Important Information

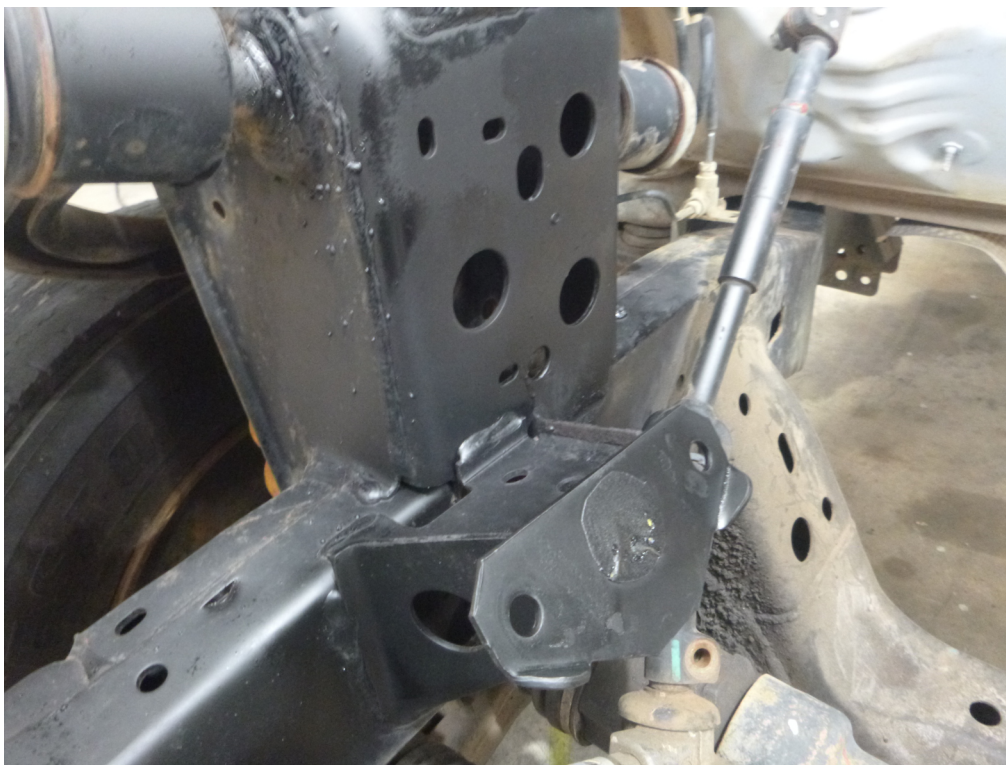
This instruction booklet can be used standalone for the above stated conversion but we would also recommend having a workshop manual for your vehicle and for the engine/transmission you are installing to cover any factory torque / installation settings to complete the installation.

The instruction booklet describes the required modifications (if any) and installation process in order for our kit to fit and work properly. These instructions **make no assumption** on whether additional changes need to be considered or made. It is highly possible that other aspects of your vehicle and/or third party products, eg. Engine, transmission etc. will have an impact on all that is required for you to achieve your desired outcome.

Marks 4WD Adaptors do not and cannot take responsibility for knowing everything that may impact on your conversion. Before beginning any work, thoroughly work through the sequence of changes, work and potential impact of your conversion. You must ensure you completely understand all the factors that may impact on achieving your desired results.

### ***Step 1 Remove factory engine mounts from chassis brackets***

Remove original Toyota engine mounts and brackets from chassis post. See image 1.1



***Image 1.1 Toyota Chassis Post***

### ***Step 2 Prepare Toyota chassis post for LS engine mounts***

Install Chassis Post Bracket MFC40280 - LS V8 to 05+ IFS Hilux to the Toyota chassis post. Use two (2) M10 x 1.5 Flanged Nuts. Repeat for both Left & Right sides. See image 2.1



***Image 2.1 MFC40280 Installed***



### **Step 3 Chassis Post modification**

Using a paint marker, make a dot at the top of the slot of Chassis Post Bracket MFC40280. See *image 3.1*



***Image 3.1 Marking Chassis Post***

### **Step 4 Drill Toyota Chassis Post**

Remove Chassis Post Bracket MFC40280 from the Toyota chassis post.

Some models may already have a hole in the chassis post, but it will need to be enlarged and moved up 4mm to line up with our plate. Use a 28mm hole saw and drill hole to make clearance for the M12 flanged nut securing the engine mount rubber. Touch up the raw steel edge of the hole with paint. Repeat for both Left & Right sides. See *image 4.1*



***Image 4.1 Drill Toyota Chassis Post***



## **Step 5 Assemble Engine Mounts**

**FOLLOWING THE STEPS IN ORDER WILL ENSURE SUCCESSFUL FITMENT & EASE OF INSTALLATION.**

The rubber engine mounts can now be bolted to the chassis post bracket using the M12 flanged nuts.

*See image 5.1*

Now bolt this assembly to the Toyota chassis post using two (2) M10 flanged nuts to the right side chassis post (Drivers side in Australia). *See image 5.2*

Locate the engine mount stabiliser over the rubber engine mount, ensuring the dowel locates. *See image 5.3*

See the assembly drawing for orientation and part locations. *See image 5.4*

Witness mark the nuts using a paint marker.



***Image 5.1 Rubber mounts to chassis post bracket***

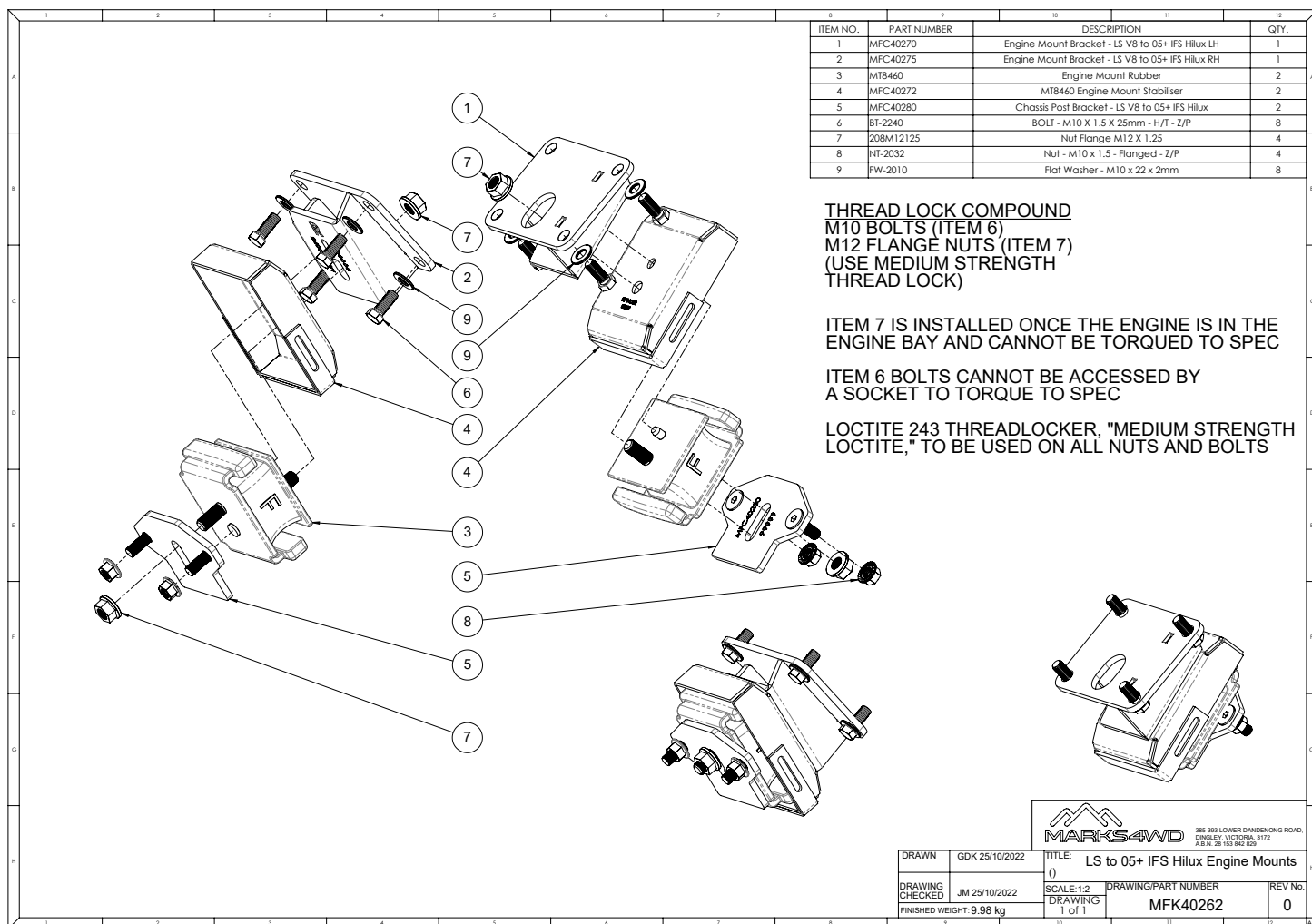


***Image 5.2 Bolted to chassis post***



***Image 5.3 Assembled to RHS chassis post***





**Image 5.4 Assembly Drawing**

### Step 6 Lower the engine into the engine bay.

Lowering the engine into position will require the back of the gearbox to drop down to aid the installation of engine mounts in both manual and auto conversion.



**Image 6.1 Lowering engine**

### **Step 7 Assemble & Install LHS Engine Mount**

Bolt the rubber engine mounts to the chassis post bracket using the M12 flanged nuts. See *image 5.4*

Now bolt this assembly to the Toyota chassis post using two (2) M10 flanged nuts to the left side chassis post (Passenger side in Australia). See *image 7.1*

Locate the engine mount stabiliser over the rubber engine mount, ensuring the dowel locates.

See assembly drawing for torque specifications, See *image 5.4*



***Image 7.1 LHS Engine Mount***

### **Step 8 Install engine mount brackets to engine block**

Slide engine mount brackets on both sides of the engine block and loosely install bolts from brackets to engine and nuts on the rubber mount. Do not tighten bolts & nuts at this stage. See *image 8.1* & *image 8.2*



***Image 8.1 LHS Engine Mount***



***Image 8.2 LHS Engine Mount***



### **Step 9 Tighten Bolts & Nuts**

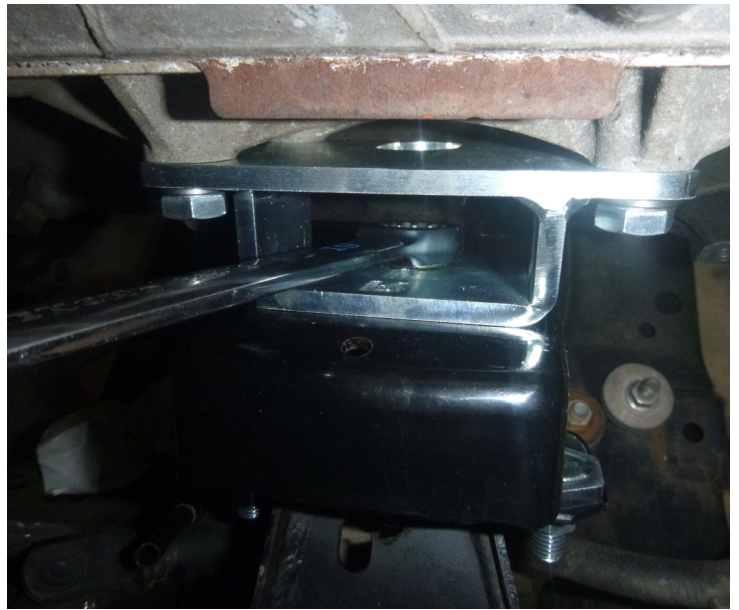
Tighten LHS & RHS engine mount bracket bolts. See Image 9.1

Tighten LHS & RHS engine mount rubber M12 flanged nuts. See Image 9.2

Witness mark the bolts & nuts using a paint marker.



**Image 9.1 Engine Mount Bracket**



**Image 6.3 Engine Mount rubber M12 Nut**

### **Step 10 Complete Checks**

Refer to image 5.4 to ensure all components are assembled correctly.

You have now completed the engine mount installation.

## **Terms and Conditions**

Thank you for purchasing this product manufactured by Marks 4WD Adaptors. Components supplied in this kit are designed and machined for a specific conversion only as outlined in this guide. Modifications to or substitution for any of the components without the written consent of Marks 4WD Adaptors will void any possible warranty or return privileges.

The following instructions are intended as a guide and only for Marks 4WD Adaptors kits. If you do not fully understand the steps, modifications or changes required to complete the conversion, contact our sales department for more information. We recommend that you purchase a service manual pertaining to your vehicle for specific torque values, wiring diagrams and other related information.

## **Contact Information**

Web: <http://www.marks4wd.com/>  
Email: [sales@marks4wd.com](mailto:sales@marks4wd.com)  
Phone: +61 3 9552 6555  
Address: 385-393 Lower Dandenong Rd  
Dingley, Victoria, 3172  
Australia