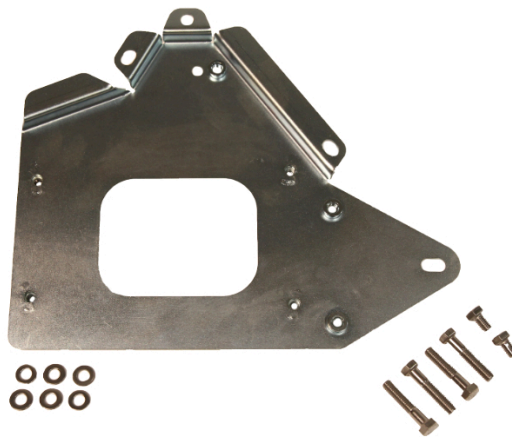




**Fitting Instructions for
MFK40421
ECU Mount Kit
LS V8 to 05+ IFS Toyota Hilux KUN26**

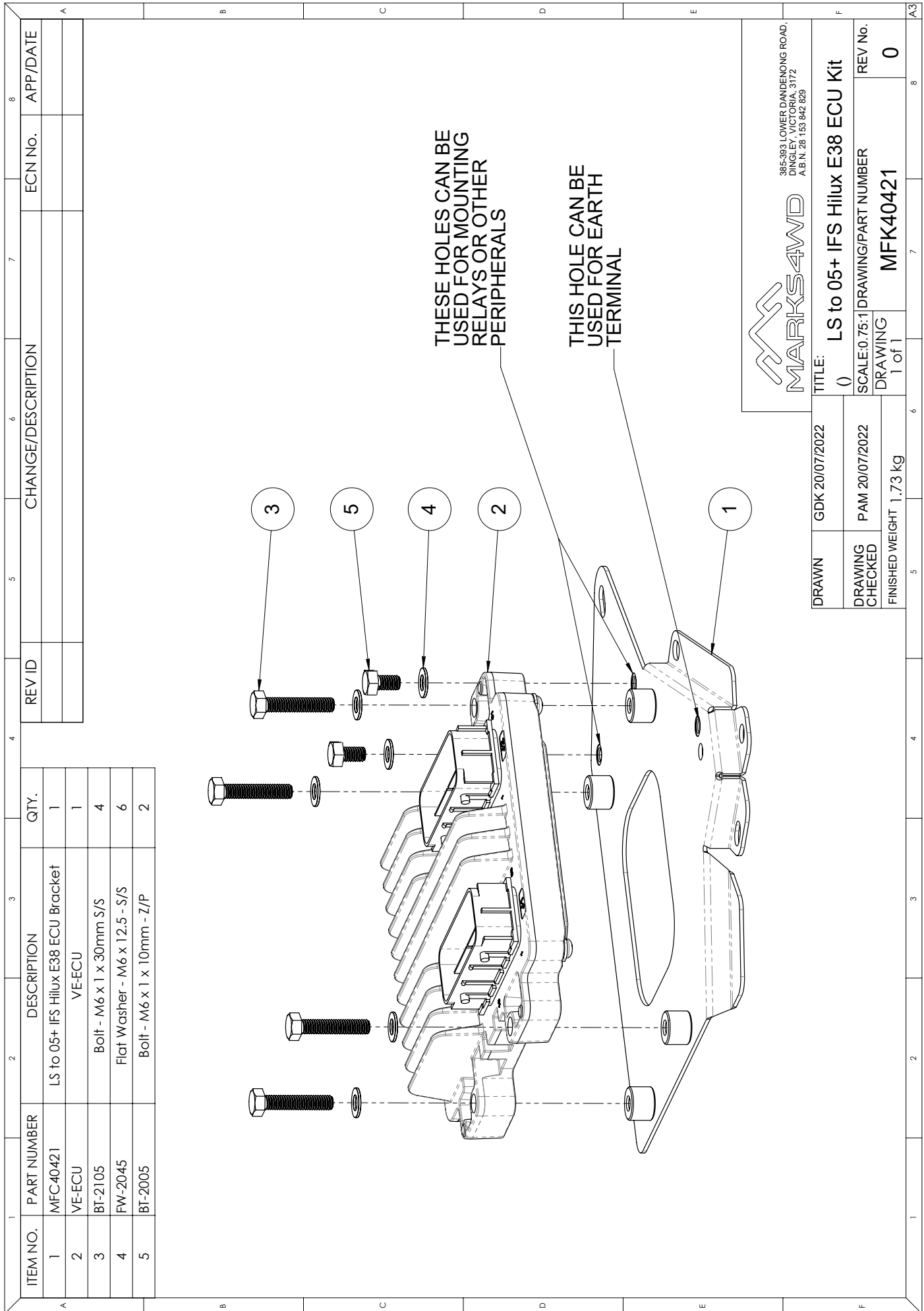



Important Information

This instruction booklet can be used standalone for the above stated conversion but we would also recommend having a workshop manual for your vehicle and for the engine/transmission you are installing to cover any factory torque / installation settings to complete the installation.

The instruction booklet describes the required modifications (if any) and installation process in order for our kit to fit and work properly. These instructions **make no assumption** on whether additional changes need to be considered or made. It is highly possible that other aspects of your vehicle and/or third party products, eg. Engine, transmission etc. will have an impact on all that is required for you to achieve your desired outcome.

Marks 4WD Adaptors do not and cannot take responsibility for knowing everything that may impact on your conversion. Before beginning any work, thoroughly work through the sequence of changes, work and potential impact of your conversion. You must ensure you completely understand all the factors that may impact on achieving your desired results.





 385-393 LOWER DANENONG ROAD,
 DINGLEY, VICTORIA, 3172
 A.B.N. 28 163 842 829

DRAWN		GDK 20/07/2022		TITLE:		LS to 05+ IFS Hilux E38 ECU Kit	
DRAWING CHECKED		PAM 20/07/2022		SCALE:0.75:1		DRAWING/PART NUMBER	
FINISHED WEIGHT		1.73 kg		DRAWING		MFK40421	
				1 of 1		REV No. 0	

ITEM NO.	PART NUMBER	DESCRIPTION	QTY.
1	MFC40421	LS to 05+ IFS Hilux E38 ECU Bracket	1
2	VE-ECU	VE-ECU	1
3	BT-2105	Bolt - M6 x 1 x 30mm S/S	4
4	FW-2045	Flat Washer - M6 x 12.5 - S/S	6
5	BT-2005	Bolt - M6 x 1 x 10mm - Z/P	2

Step 1 Remove trims for access

Remove the glove box, left kick panel trim and under dash trims to gain access.

Step 2 Install Marks4WD MFC40421 E38 ECU Bracket

Bolt MFC40421 to the left side of the glove box utilising the holes located on the edges of the bracket.

See image 2.1

Step 3 Install VE - ECU E38 (Not Supplied)

Install your VE ECU (**Not Supplied**) to the MFC40421 E38 ECU bracket with the supplied M6x1x30 bolts Qty 4
There are 3 threaded holes for mounting relays or grounding earths.

See drawing MFK40421 on Page 2.

Step 4 E38 ECU Wiring

Install your two (2) wiring plugs into the ECU.

You have now completed the E38 ECU bracket installation. *See image 4.1*

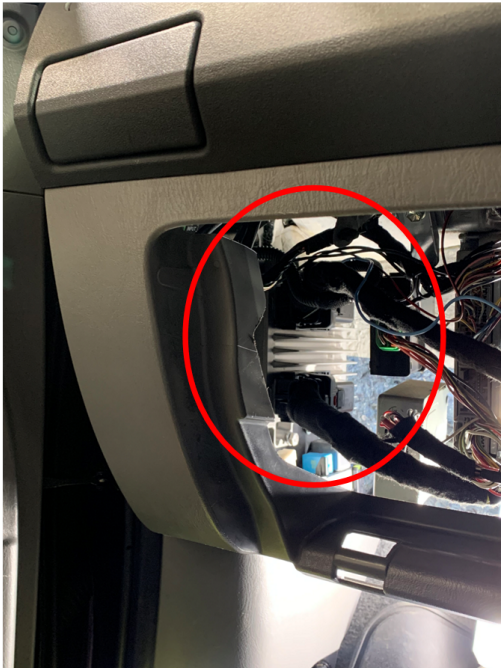


Image 1.1 Left side of glove box

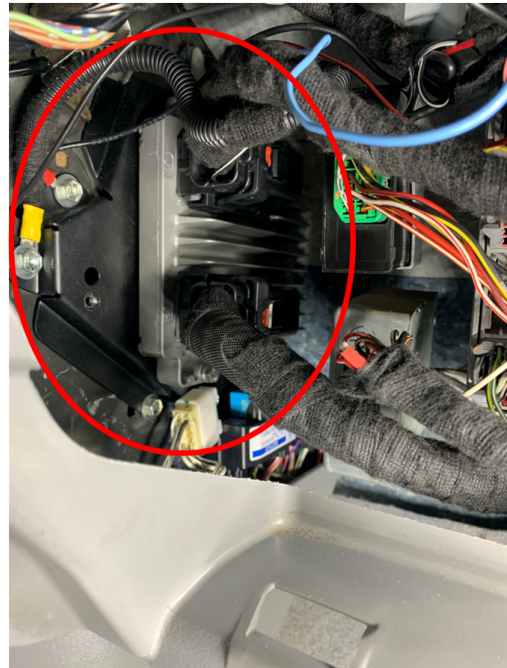


Image 4.1 E38 ECU & Bracket

Terms and Conditions

Thank you for purchasing this product manufactured by Marks 4WD Adaptors. Components supplied in this kit are designed and machined for a specific conversion only as outlined in this guide. Modifications to or substitution for any of the components without the written consent of Marks 4WD Adaptors will void any possible warranty or return privileges.

The following instructions are intended as a guide and only for Marks 4WD Adaptors kits. If you do not fully understand the steps, modifications or changes required to complete the conversion, contact our sales department for more information. We recommend that you purchase a service manual pertaining to your vehicle for specific torque values, wiring diagrams and other related information.

Contact Information

Web: <http://www.marks4wd.com/>
Email: sales@marks4wd.com
Phone: +61 3 9552 6555
Address: 385-393 Lower Dandenong Rd
Dingley, Victoria, 3172
Australia