



## Fitting Instructions for MFK40415 Fan Shroud Kit - LS V8 to 05+ IFS Hilux



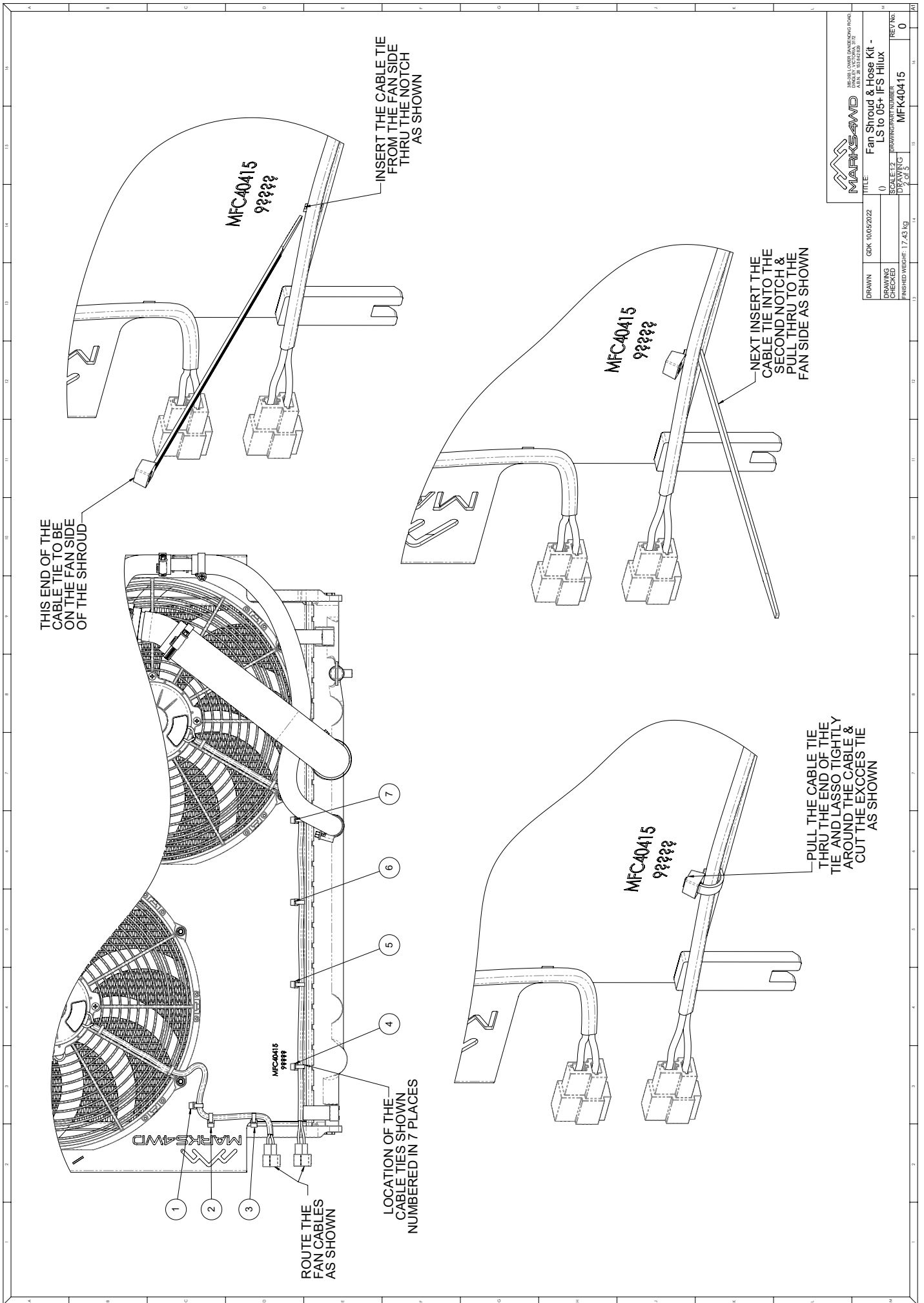
### Important Information

This instruction booklet can be used standalone for the above stated conversion but we would also recommend having a workshop manual for your vehicle and for the engine/transmission you are installing to cover any factory torque / installation settings to complete the installation.

The instruction booklet describes the required modifications (if any) and installation process in order for our kit to fit and work properly. These instructions **make no assumption** on whether additional changes need to be considered or made. It is highly possible that other aspects of your vehicle and/or third party products, eg. Engine, transmission etc. will have an impact on all that is required for you to achieve your desired outcome.

Marks 4WD Adaptors do not and cannot take responsibility for knowing everything that may impact on your conversion. Before beginning any work, thoroughly work through the sequence of changes, work and potential impact of your conversion. You must ensure you completely understand all the factors that may impact on achieving your desired results.



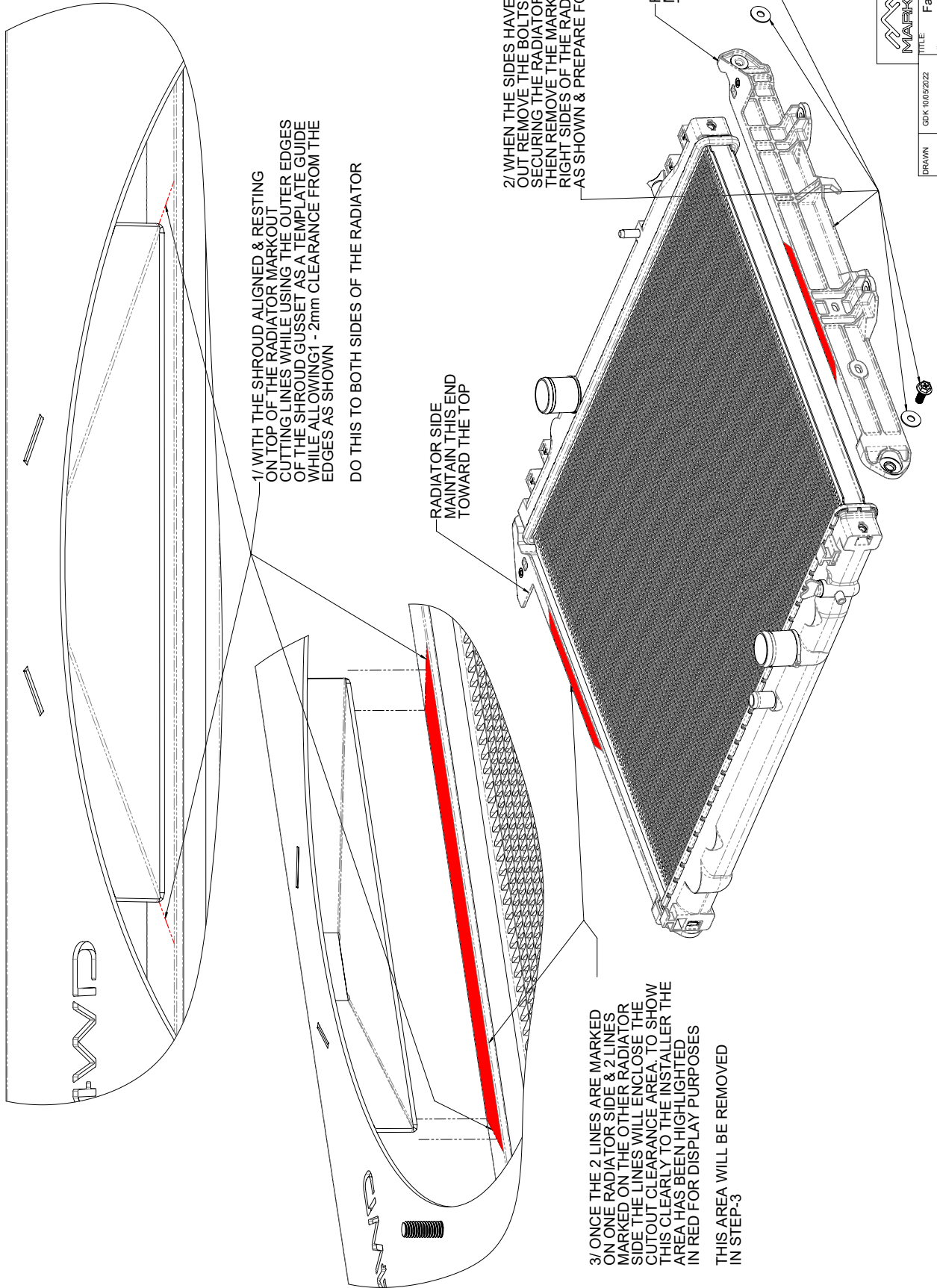



TITLE: Fan Shroud & Hoses Kit - LS to 05+ IFS Hilux	
DRAWN: 0	REV: 0
CHECKED:	DRAWING NO: MFK40415
FINISHED WEIGHT: 1.743 kg	PART NO:

DRAWN: GPK 10/05/2022	FINISHED WEIGHT: 1.743 kg
CHECKED:	PART NO:



## STEP-2 MARKING OUT



 MARKS4WD <small>HEAVY DUTY OVERLANDING EQUIPMENT</small>		TITLE: Fan Shroud & Hose Kit - LS to 05+ IFS Hilux	
DRAWN	GRK-10/05/2022	ISSUE NO	0
DRAWING CHECKED		ISSUE DATE	05/05/2022
FINISHED WEIGHT	17.43 kg	DRAWING NO	MFK40415
		REV NO	0

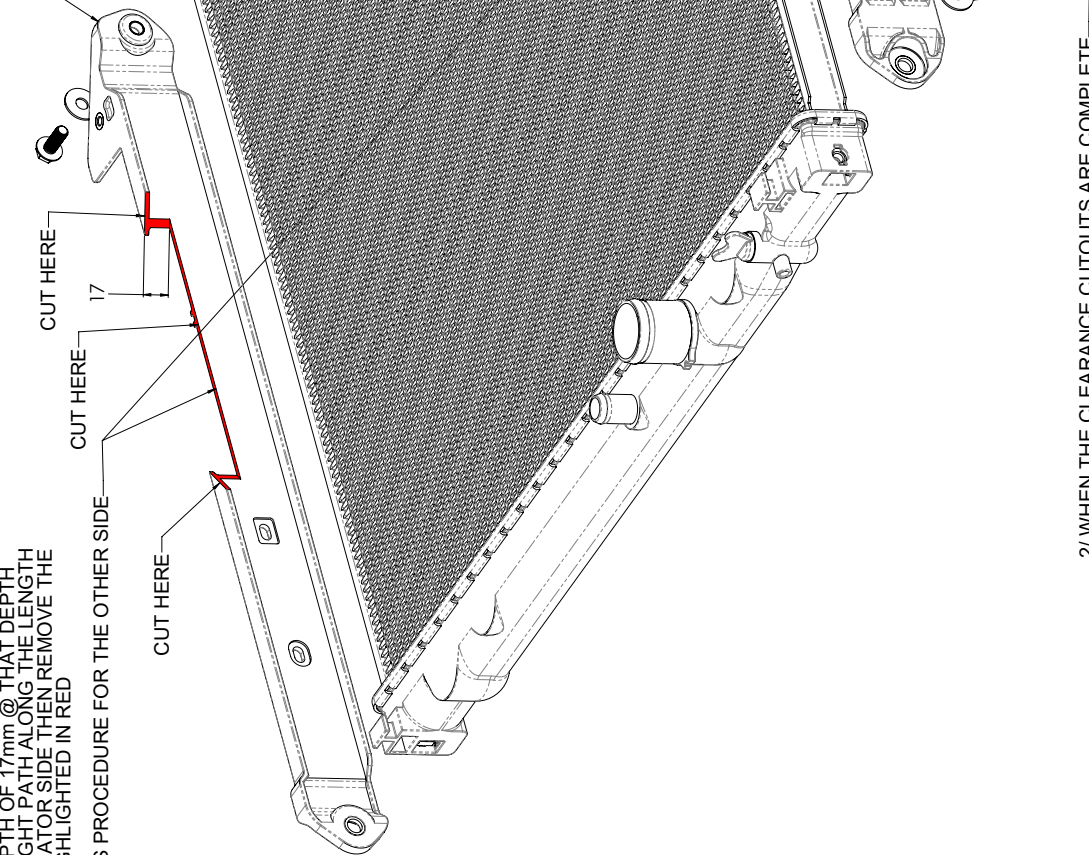
### STEP-3 TRIMMING

1/ WITH THE RADIATOR SIDES REMOVED CUT ALONG THE LINES MARKED TO A MINIMUM DEPTH OF 17mm @ THAT DEPTH CUT A STRAIGHT PATH ALONG THE LENGTH OF THE RADIATOR SIDE THEN REMOVE THE SECTION HIGHLIGHTED IN RED REPEAT THIS PROCEDURE FOR THE OTHER SIDE

RADIATOR SIDE MAINTAIN THIS END TOWARD THE TOP

3/ AFTER THE SIDES HAVE BEEN MOUNTED ONTO THE RADIATOR CHECK THE FITTMENT WITH THE FAN SHROUD THE GUSSETS SHOULD SIT WITHIN THE CUTOUTS MADE TO THE SIDES

RADIATOR SIDE MAINTAIN THIS END TOWARD THE TOP



2/ WHEN THE CLEARANCE CUTOUTS ARE COMPLETE REASSEMBLE THE SIDES TO THE RADIATOR WHILE MAINTAINING THE CORRECT ORIENTATION AS SHOWN ABOVE

**MARKS4WD**  
MARKS4WD RACING AND ROADS  
 170A, 170B, 170C, 170D, 170E, 170F, 170G, 170H, 170I, 170J, 170K, 170L, 170M, 170N, 170O, 170P, 170Q, 170R, 170S, 170T, 170U, 170V, 170W, 170X, 170Y, 170Z

**TITLE:** Fan Shroud & Hose Kit - LS TO 05+ IFS Hilux  
**SCALE:** 1:1  
**DRAWN BY:** MFK40415  
**5 of 5**

**REV No:** 0

<b>DRAWN</b>	GDK 10/05/2022
<b>DRAWING CHECKED</b>	
<b>FINISHED WEIGHT</b>	17.43 kg

## Step 1 ALIGNMENT

Overlay the fan shroud on top of the radiator. **BE CAREFUL NOT TO DAMAGE THE RADIATOR CORE**  
The bottom of the shroud, ensure the locating tab on fan shroud sits on top of the locator on the radiator.  
**DO NOT INSERT THE SHROUD TAB AT THIS STAGE** See image 1.1 & Page 4 for View - A  
With the bottom locator tabs aligned, the top threaded hole of the radiator **MUST** be located within the elongated slot of the fan shroud, while the fan shroud rests on the radiator.  
You can install the top two (2) bolts to locate and maintain the fan shroud from moving.  
See image 1.1 & Page 4 for View - B



**Image 1.1 Fan Shroud on Top of Radiator**

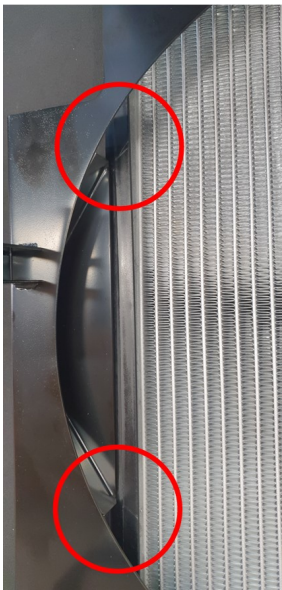
## Step 2 MARKING OUT

With the shroud aligned & resting on top of the radiator, you are now ready to mark out the cutting lines. Use the outer edges of the shroud gusset as a template guide, while allowing a 1mm to 2mm clearance from the edges. See image 2.1 & Page 5 **Carry this out for both sides of the radiator.**

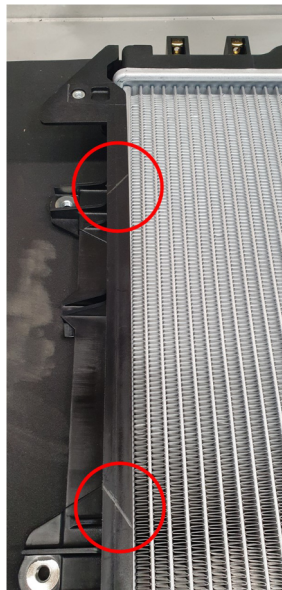
After you have marked out both sides of the radiator, carefully remove the fan shroud off the radiator. **Becareful not to damage the radiator core.**

You will now see the marked lines. See image 2.2, image 2.3 & Page 5

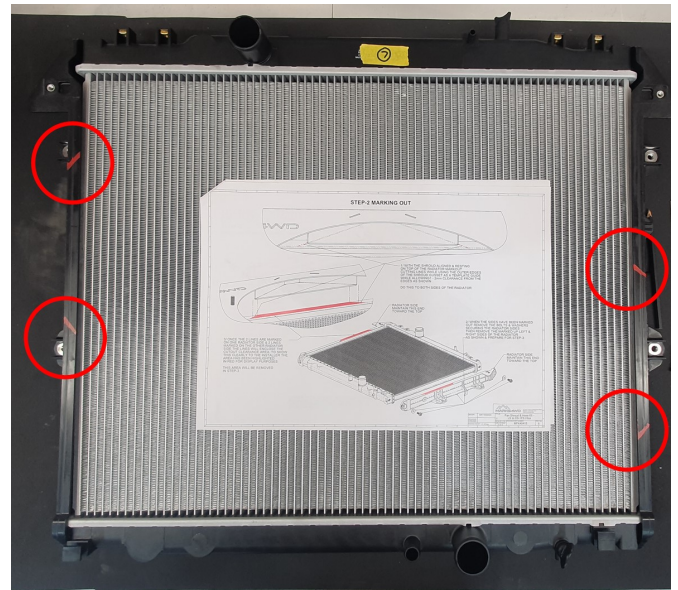
Take a photo or mark with a paint marker, to show orientation of the radiator sides. Left, right, top & bottom. This will make reassembly easier at a later stage. Now remove the bolts & washers that secure the radiator sides. You are now ready to remove the plastic sides from the radiator for trimming. See Page 5



**Image 2.1  
Fan Shroud Marking**



**Image 2.2  
Marks for Cutting**



**Image 2.3 Marks for Cutting Both Sides**

### Step 3 TRIMMING

Cut along the lines you previously marked out, to a minimum depth of 17mm.

Carry out this for both marked angles.

Then at the depth of 17mm, cut along the length of the radiator side to meet up with the other cut angle you have done at the depth of 17mm. This will give you a section to remove which is highlighted in **RED**.

See image 3.1 & See page 6 showing the removed section.

Repeat this for the other radiator side you previously removed. See image 3.2

When the clearance cutouts are complete, reassemble the radiator sides to the radiator using the bolts & washers you previously removed. See image 3.3

Remember to reassemble the radiator sides to the correct orientation.

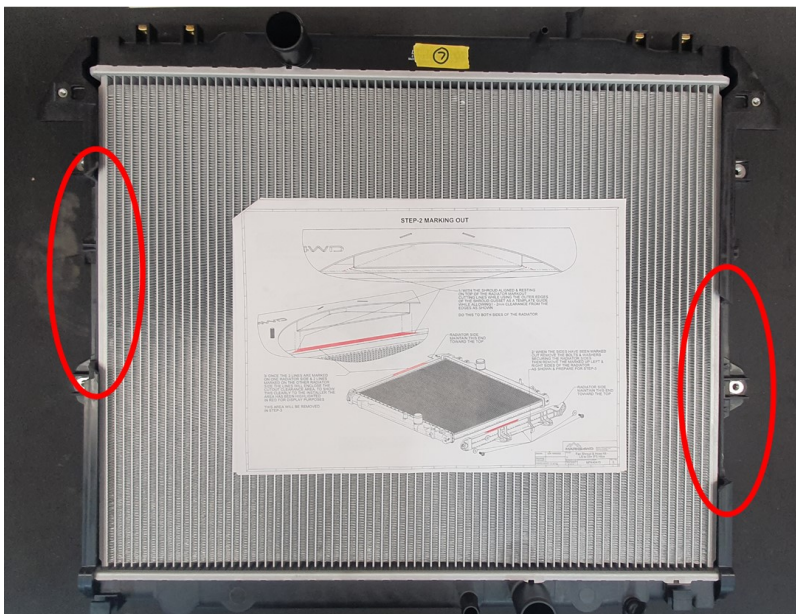
Check your photo or paint marks you previously did in step 2 for the correct orientation.



**Image 3.1** Marks for Cutting



**Image 3.2** Removed Section



**Image 3.3** Assembled to Radiator



#### **Step 4 FAN SHROUD FITMENT**

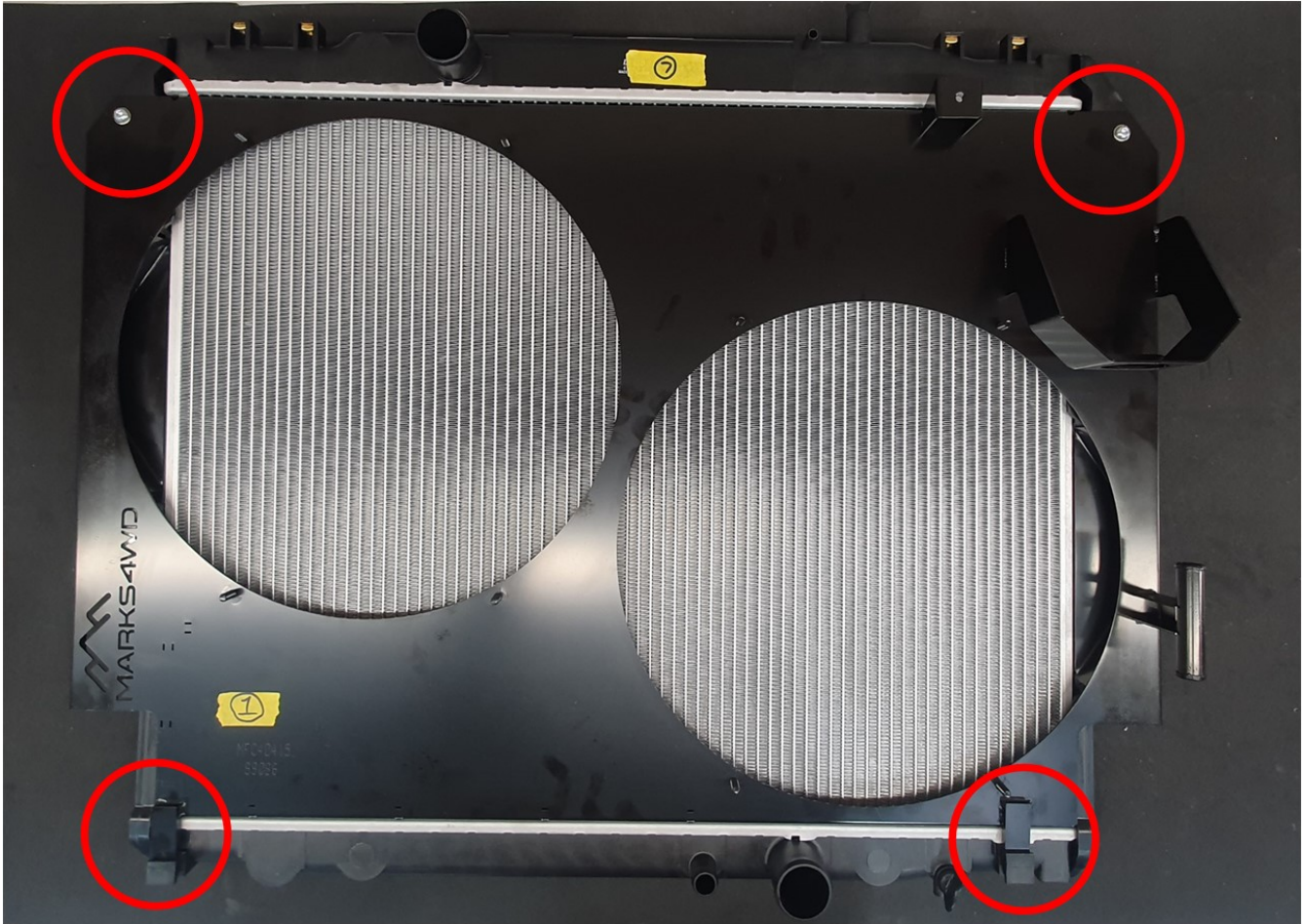
Install the fan shroud to the radiator. Becareful not to damage the radiator core.

Insert the bottom of the shroud into the locator tabs. *See image 4.1*

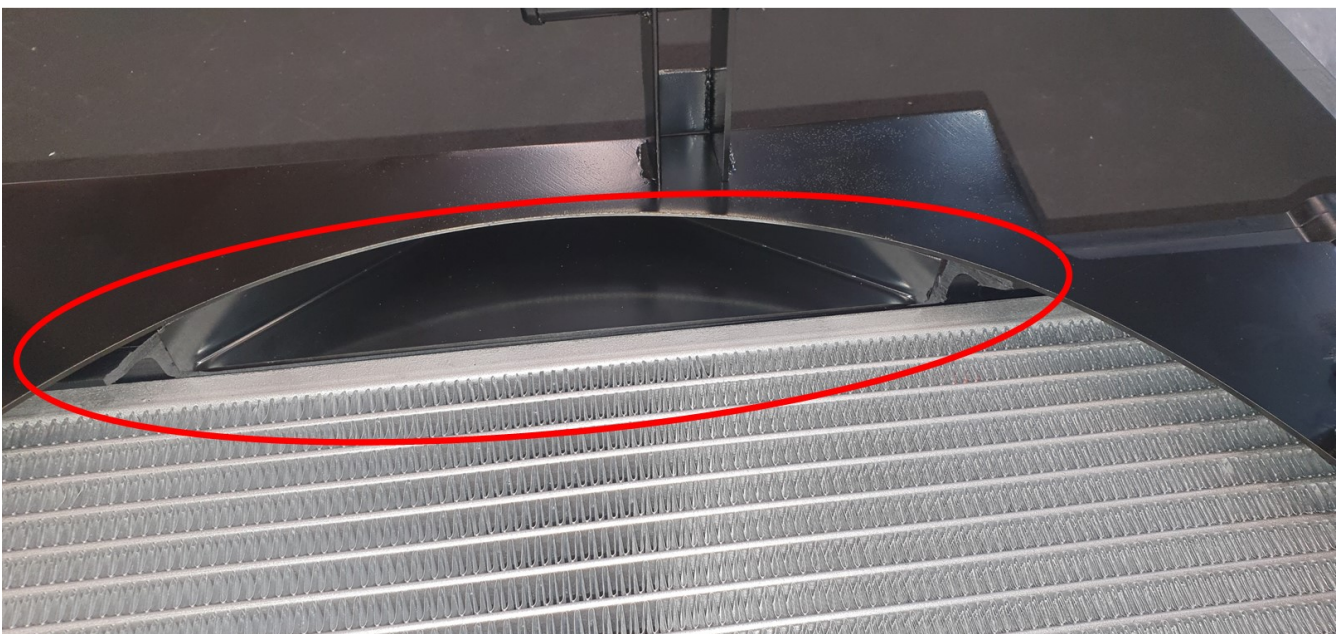
With the bottom locator tabs inserted, the top threaded hole of the radiator will be located within the elongated slot of the fan shroud. Install the two (2) bolts at the top of fan shroud.

Now with the fan shroud on the radiator check and ensure the fan shroud gussets sit within the cut outs (section removed) you have made in the radiator sides. *See image 4.2*

Slight trimming maybe required.



**Image 4.1 Checking Fan Shroud Fitment**



**Image 4.2 Checking Fan Shroud fitment To Area Cut Out**

## Step 5 INSTALLATION

Install the two (2) thermo fans and secure with nuts.

Route and secure the fan wiring with cable ties. See image 5.1 & Page 3 locations.

Install thermo fan shroud bracket MFC40416 to top of radiator. See image 5.2 & Page 2 for location.

Install all cooling system hoses & expansion tank **NOT supplied**. See image 5.3 & Page 2.

Install the supplied Thermostat 54mm 71 Degrees C (DT125C) to your water pump.

You may require a new housing gasket & sealant which is **NOT supplied**.

You are now ready to install to your vehicle.

Remember to refill & bleed the cooling system with the correct coolant to suit your engine conversion.



Image 5.1 Fan Wiring



Image 5.2 Expansion Tank Bracket



Image 5.3 Fan Shroud Complete

## Terms and Conditions

Thank you for purchasing this product manufactured by Marks 4WD Adaptors. Components supplied in this kit are designed and machined for a specific conversion only as outlined in this guide. Modifications to or substitution for any of the components without the written consent of Marks 4WD Adaptors will void any possible warranty or return privileges.

The following instructions are intended as a guide and only for Marks 4WD Adaptors kits. If you do not fully understand the steps, modifications or changes required to complete the conversion, contact our sales department for more information. We recommend that you purchase a service manual pertaining to your vehicle for specific torque values, wiring diagrams and other related information.

## Contact Information

Web: <http://www.marks4wd.com/>  
Email: [sales@marks4wd.com](mailto:sales@marks4wd.com)  
Phone: +61 3 9552 6555  
Address: 385-393 Lower Dandenong Rd  
Dingley, Victoria, 3172  
Australia